

WISCONSIN VISUAL ARTISTS
PERSPECTIVES 2023



Amy Cannestra – *Layers of Comfort* (edition 1 of 2) | First Prize

WISCONSIN VISUAL ARTISTS
PERSPECTIVES 2023





Wow! What a wonderful representation of our Wisconsin Visual Artists' perspectives! It has been an ongoing goal of WVA to provide more statewide opportunities for exhibition to our members. We could not be more delighted to partner with Thelma Sadoff Center for the Arts to provide this opportunity in their beautiful venue. This show exemplifies the diverse depth and breadth of artworks being created by our members!

We would like to thank all our members who entered. The scope of work being considered was impressive. Our jurors, Deb Bremmer and Leslie Iwai, had no easy task in making their choices. Their expertise and broad perspective with the choices they made is truly appreciated.

As an organization, it is an honor to provide opportunities to empower and represent you, our valued members. We look forward to providing this opportunity at Thelma again in 2025!

Jane Constable Hostetler
WVA Board President

The energy surrounding this exhibition has been immense and exciting. I'm so pleased that we, as an organization, can offer our membership a platform they deserve: fabulous, accomplished jurors and a beautiful venue for their creative work. The result was two stories of wide-ranging visual storytelling and appreciative, thrilled artists.

At the opening of the exhibition, there was definitely an air of forward motion and growth for the organization felt by all. I look forward to seeing these warm, fuzzy feelings snowball into a new chapter for the Wisconsin Visual Artists. Onward!

Ally Wilber
WVA Executive Director

Thank you to Thelma Sadoff Center for the Arts for hosting this
exhibition in their beautiful facility!

THELMA

JUROR Statements



Leslie Iwai

There was such a variety of work entered and selected that it made me think that we have really, finally broken down categorical barriers and divisions. Any media, size, style, seems not only OK but fresh, valid, and very welcome. This sense of artists being able to do whatever they feel like doing while still feeling hopeful that their work might be seen or shown represents the broader issues of opening the art world to more diversity or a broader range of makers from all backgrounds. A group exhibition is most alive when the materials and approaches surprise us and communicate energetically like a classroom of active first graders.

I'm glad artists are playing freely and experimenting with materials. The award winners represent this. It wasn't just their ability or facility or skill with materials, but something else. Each took a slightly unexpected turn. When the formal elements of a piece speak in unison with the content, or speak emphatically as if there is something that must be said, the electrical current is unmistakable. Thank you all for submitting your work and participating in this exhibition!

Leslie Iwai is an installation artist and sculptor whose studies in mathematics, chemistry, and architecture (MArch Virginia Tech) inform her passion to bring unusual connections found in her research and artistic process to the surface for others' ruminations and inspiration. As the first recipient of the Bemis Community Arts Fellowship (2005) and, most recently, as a 2021 finalist for the Forward Art Prize and part of the Museum of Wisconsin Art's *Claiming Space: A New Century of Visionary Women* (2021), Leslie has had many awards, solo exhibits, and residencies. Her work is in numerous private and public collections, including Duncan Aviation and the Omaha Public Art Commission. Leslie has taught in both academic and community settings in Nebraska, Wisconsin, Illinois and New Mexico. She has been a contributing writer and artist for *Image Journal*, *SEEN* (CIVA) and *The Well* (InterVarsity). She enjoys living in and exploring Wisconsin with her husband where she creates art and collaborates and connects with her community. When not in her studio, Leslie can often be found hunting for treasures at thrift stores or walking on trails near her home in Middleton, Wisconsin.

You may view her artwork at www.leslieiwai.com



Deb Brehmer

Jurying the Perspectives exhibit was both a challenge and a delight. As an artist who moved to Wisconsin in 2011, I have been exposed to many remarkable artists, but in reviewing the submitted work for this show, I was introduced to such a larger swath of Wisconsin artists very new to me and I have been so grateful for this experience. One of the things that stands out in this gathering of Wisconsin visual artists is the broad range of expression. I am struck by the size, scale, and variety of medium and content in this collection.

Jurying online is standard, and it serves the process well. However, in addition to this, I had the absolute joy of seeing the juried work curated in person. The gallery at the Thelma Sadoff Center for the Arts held the art so beautifully. Curator, Shannon Kupfer, brought out so many new stories in the arrangement of works that they resonated between each other, bringing the exhibit to life. I noticed vibrant color and texture on the first floor including the juxtaposition of Tanya Steele's midair felted ear of corn with Isaiah Young's astronaut imagery. Going up the stairs filled with vibrant paintings and photography led to more organic expressions, including William Nettlehorst's life-sized buffalo framed by Sara Meredith's installation "What Connects Us".

Each piece of art in this exhibit is to be commended and the creation of the Perspectives catalogue is a place where the work can be continued to be enjoyed as a whole. With that in mind, I want to finish with the most important part of my jury experience; meeting so many of the artists in person at the opening. I enjoyed hearing the stories of how things were made, where people were from and the motivation behind their art practices, it is humbling to have this opportunity. One of the things that I spoke about in my comments at the opening is that artists should notice and reach out to each other as they discover who they were "hanging with" in the exhibit. Noticing and forging these personal connections is vital to the Wisconsin artist community, and it will continue to foster more vibrant and organic growth for all of us.

Debra Brehmer is the owner and director of Portrait Society Gallery of Contemporary Art (PSG) in Milwaukee, WI and she also manages its related nonprofit, On the Wing. She has played a number of roles in the art world that encompass writing, curating, and teaching. From 1986 to 1995 she published and edited a bi-monthly art magazine called Art Muscle which was circulated in Wisconsin and sold on national newsstands. She taught art history as an adjunct professor for 10 years at the Milwaukee Art and Design prior to opening the gallery. Brehmer is currently a regular writer for the national art publication, Hyperallergic where she often writes about women artists. Brehmer's essay about Edouard Manet's model Victorine Meurent is included in the book *Fierce: Essays by and About Dauntless Women* (2018), Nauset Press. She has also written many catalog essays for museum and gallery exhibitions. In recent years, Brehmer has been working on a series of essays about well known historical works of art and their contemporary value. These personal narratives combine travel and art history within an interpretive framework. She is also currently editing the catalog for an upcoming exhibition, "Art Against the Odds: Wisconsin Prison Art," which will be presented by PSG's nonprofit, On the Wing, in January 2023 at the Milwaukee Institute of Art and Design.

ARTISTS

Patricia Algiers

Shorewood

Jennifer Angelo

Madison

Pat Bishop

Shawano

Karen Brittain

Milwaukee

Deborah Brooks

Milwaukee

Kimberly Burnett

Milwaukee

Amy Canestra

Cudahy

Justin Chapman

Green Bay

Martha Coaty

Racine

Amy A Cropper

Waukesha

Debra Davis-Crabbe

Two Rivers

Helen del Guidice

Sturgeon Bay

Bruce Dorow

Milwaukee

Doug Fath

Madison

Amy Fichter

Menomonie

Ruth Fromstein

Stevens Point

Nina Ghanbarzadeh

Muskego

Kristin Gjerdset

West Allis

Jen Graham

Madison

Janelle Gramling

Milwaukee

Colleen Gunderson

Stevens Point

Cindy Hansen

Grafton

Holly Harnischfeger

Fox Point

Kristine Hinrichs

Milwaukee

Sue Joesten-Merritt

Evansville

Jean Judd

Cushing

Elizabeth Kazda

Markesan

Elizabeth Sawyer Kelly

Madison

Annette Knapstein

Middleton

Michael Knapstein

Middleton

Howard Leu

Milwaukee

Michelle Louis

Middleton

Sara Meredith

Madison

Andrea Meyer

Hartford

Christine Migala

Walworth

Steve Mofle

Little Chute

Brendan Murphy

Milwaukee

Janet Nelson

Cambridge

William L Nettelhorst

Fond du Lac

Dennis Ninmer

New Holstein

Joan North

Stevens Point

Laura Pahas

Ripon

James Peterson

Menasha

Anne Raskopf

Oconomowoc

Cyndie Rauls

La Farge

Hugo Saavedra

Pleasant Prairie

Julie San Felipe

New Berlin

Dane Schumacher

Neenah

Tanya Steele

Wauwatosa

Adam Stoner

Milwaukee

Kimberly Strittmater

Portage

Christine Style

Green Bay

Victoria Tasch

Hartland

Deborah Wage

Plover

Kaitlin Walsh

Waunakee

Terri Warpinski

De Pere

Kathryn Wedge

Neenah

Joan White

Lakewood

Ally Wilber

Appleton

Sara Willadsen

Sheboygan

Isaiah Young

Sheboygan Falls

Peggy Zalucha

Mount Horeb

AWARDS



First Prize – Best of Show: \$1,000 Amy Cannestra

Layers of Comfort (edition 1 of 3)

Second Prize: \$500 William Nettelhorst

Wisconsin Prairie Bison



Third Prize: \$250 Howard Leu

Cabbage in the American Cabinet



Patricia Algiers

Owls & Night Terror

Watercolor, Gouache, Marker, Pencil, Collage

17 x 12 inches

Southeast Chapter

www.patriciaalgiers.com



Jennifer Angelo

Where Concepts Go To Collide

hand felted wool

10 x 19 x 2 inches

South Central Chapter



Pat Bishop

Harbinger

textile

40 x 27 inches

Northeast Chapter

<http://patbishop.info>



Karen Brittain

Foresee

Pastel, acrylic
21 x 30 inches

Southeast Chapter

www.karenbrittain.com



Deborah Brooks

Rip Tide

oil on canvas triptych

36 x 72 inches

Southeast Chapter

www.deborah-brooks.com



Kimberly Burnett

Up

Oils on canvas

30 x 24 inches

Southeast Chapter

www.kimjart.com



Amy Cannestra

Layers of Comfort (edition 1 of 3)

Fabric from a mattress

62 x 26 x 4 inches

Southeast Chapter

www.amycannestra.art

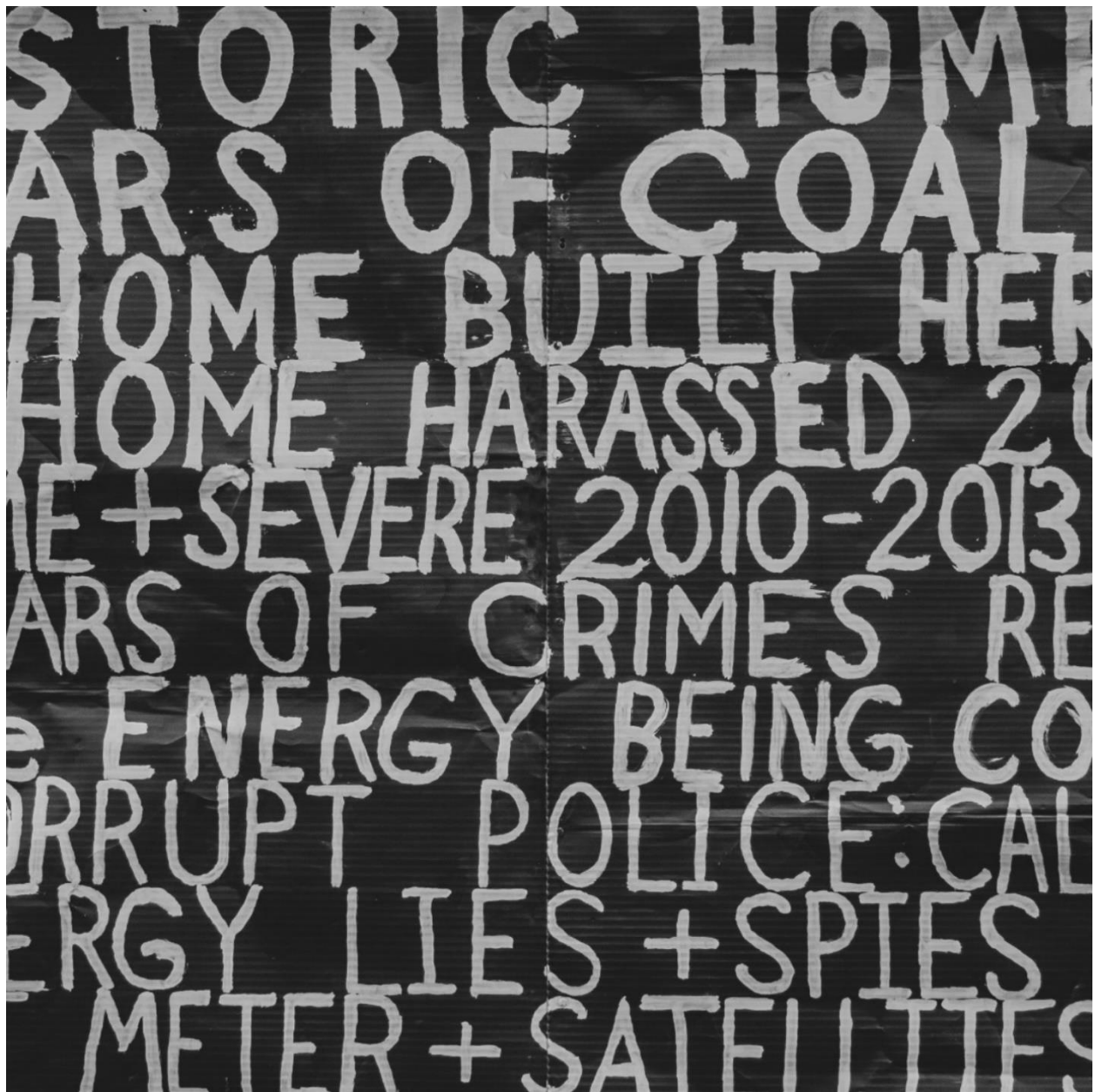


Justin Chapman

Self Portrait as a Bear

Acrylic paint, gesso, on stretched canvas
60 x 60 inches

Northeast Chapter



Martha Coaty

History Maker

Photograph C-Print

12 x 12 inches

Southeast Chapter

www.marthacoatyphotography.com



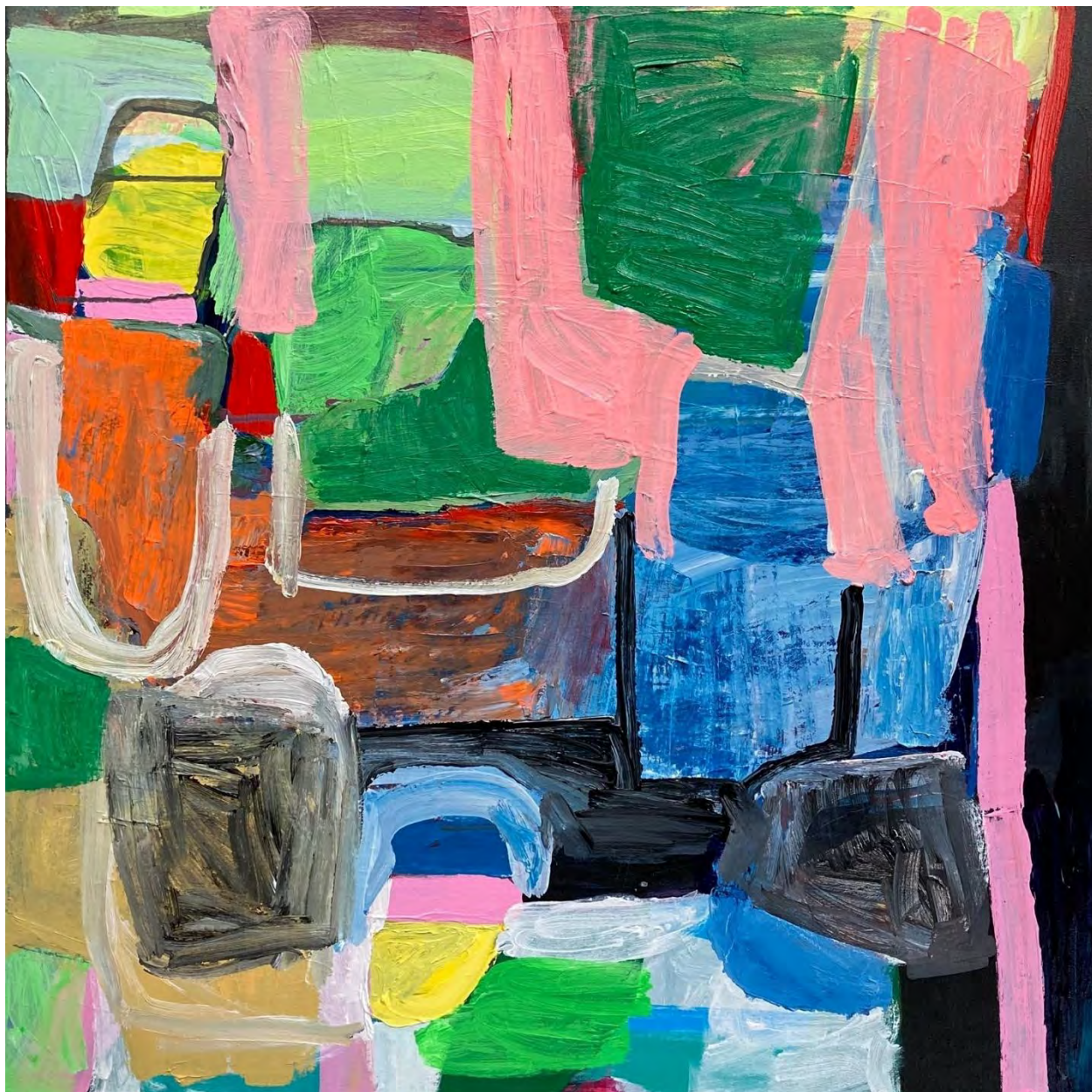
Amy A Cropper

Landscape Remnant #2

mixed media collage

14 x 18 inches

Southeast Chapter



Debra Davis-Crabbe

Moving Through The Puzzle

Acrylic on canvas

34 x 34 inches

Northeast Chapter

www.debrapaints.art



Helen del Guidice

Grace Youn: Socially Distant Fest Miniatures

oil on paper

5 x 3 inches

Northeast Chapter

www.delguidicestudio.com



Bruce Dorow

Highness

Sculpture recycled materials

47 x 22 x 17 inches

South Central Chapter



Doug Fath

Curse of the Bower Bird

acrylic on canvas
24 x 24 inches

South Central Chapter
www.dougfathart.com



Amy Fichter

Self-portrait with sunflowers

Relief print on mulberry paper
50 x 36 inches

South Central Chapter

www.amyfichter.com



Ruth Fromstein

Unexpected Growth

mixed media
49 x 47 inches

Northeast Chapter

www.ruthfromstein.com



Nina Ghanbarzadeh

Composition 35

Acrylic on frosted Mylar
36 x 36 inches

Southeast Chapter

www.ninaghanbarzadeh.com



Kristin Gjerdset

Summer Bearer

Mixed Media

14 x 17 inches

Southeast Chapter

www.kgjerdset.com



Jen Graham

forest

acrylic painting on canvas
16 x 20 inches

South Central Chapter

www.jenevergraham.art



Janelle Gramling

Exquisite Snare

Wood, manila rope, linen cord, stoneware
20 x 25 x 5 inches

Southeast Chapter

www.janellegramling.com



Colleen Gunderson

As One

photography - pigment ink on cotton rag paper
14 x 11 inches

Northeast Chapter

www.colleengunderson.com



Cindy Hansen

Lost

Composite Photography

11 x 17 inches

Southeast Chapter

www.cindyhansen.photoshelter.com



Holly Harnischfeger

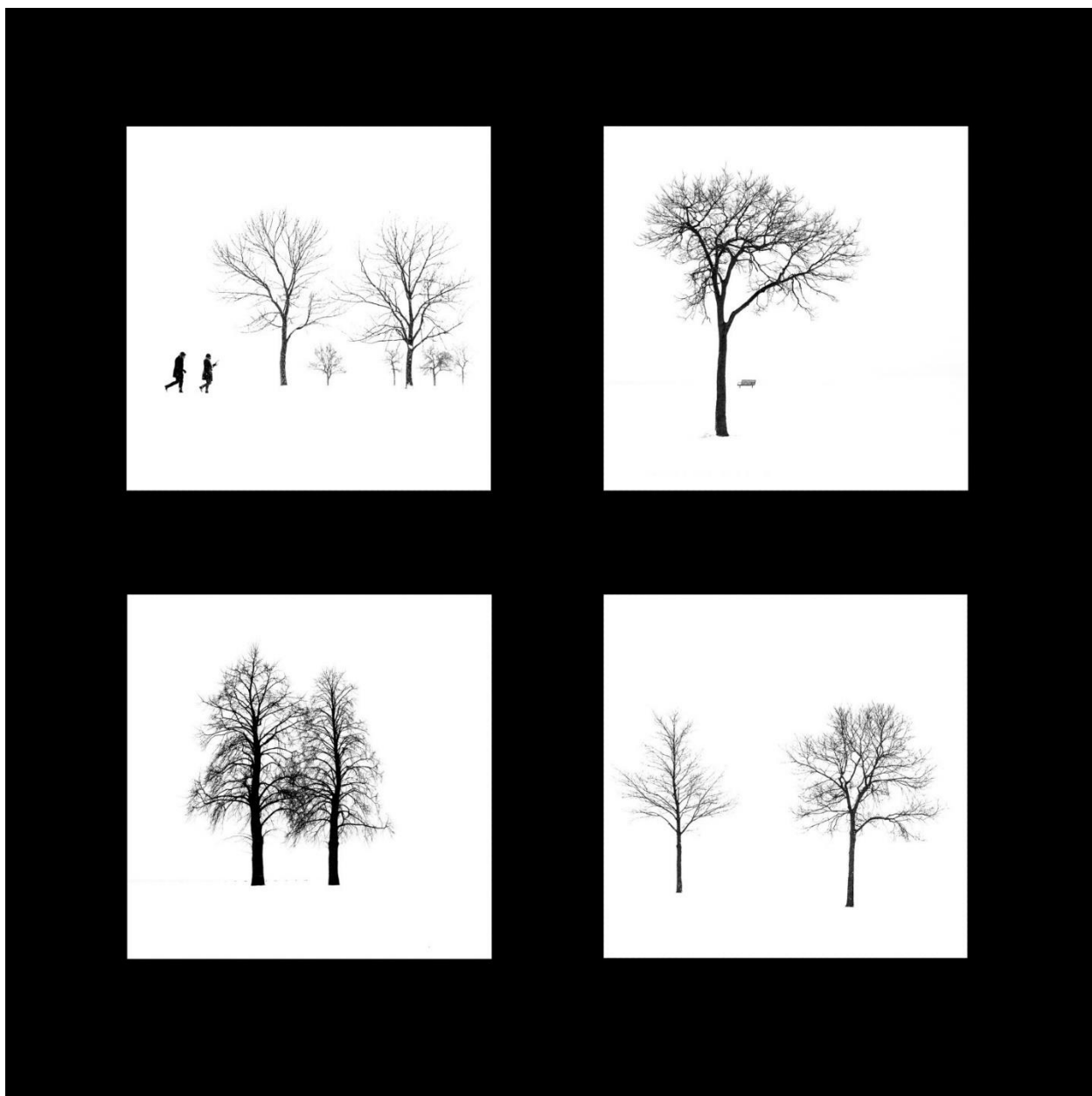
Paper Stems 1

Charcoal & Cold Wax

11 x 14 inches

Southeast Chapter

www.hollyharnischfeger.com



Kristine Hinrichs

Winter Walk

Photos printed on Habotai silk & hand-quilted
21 x 21 x 1 inches

Southeast Chapter

www.KristineHinrichsPhotography.com



Sue Joesten-Merritt

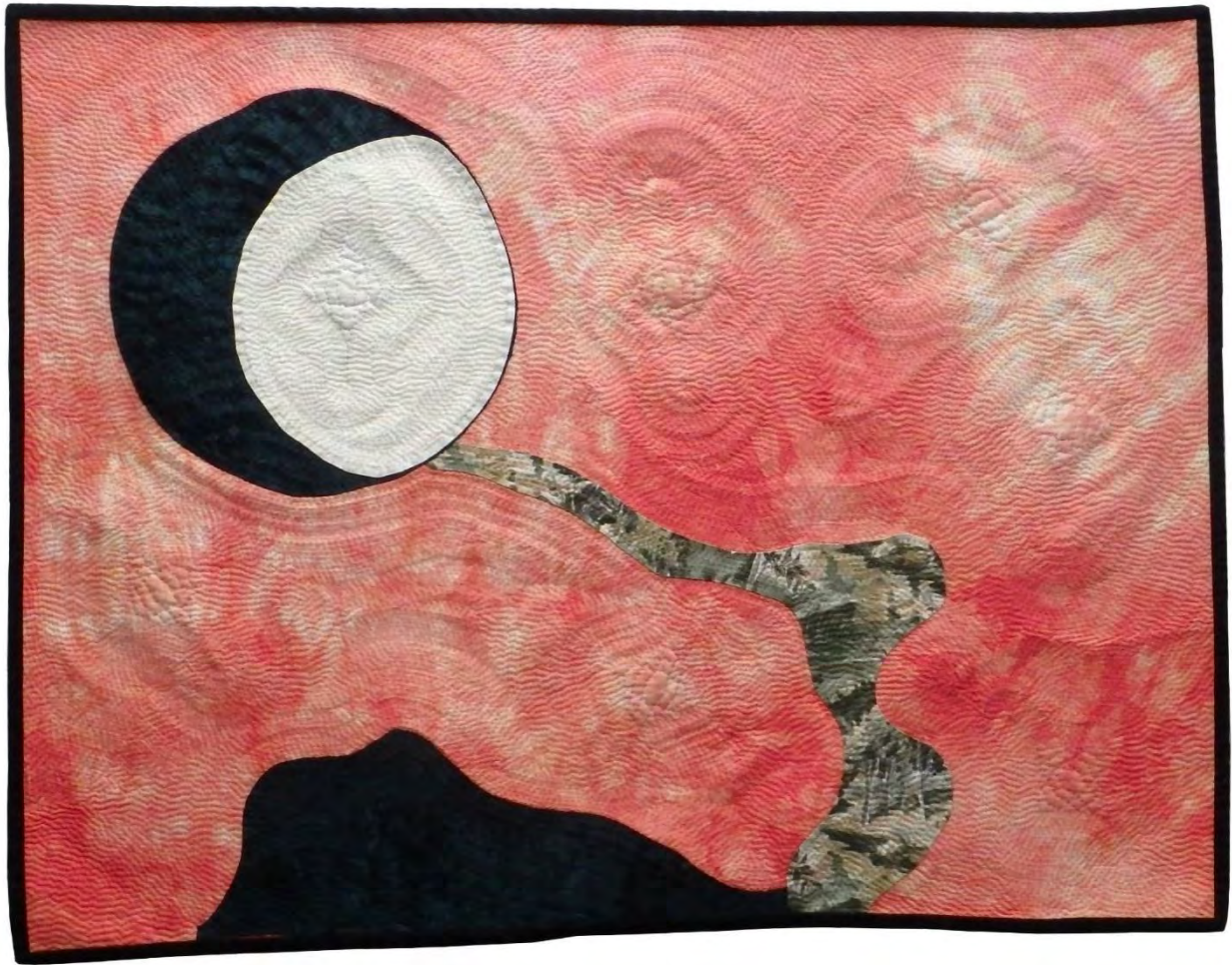
Cozumel

Photographic Composite

22 x 28 inches

South Central Chapter

www.suemerrittphotography.com



Jean Judd

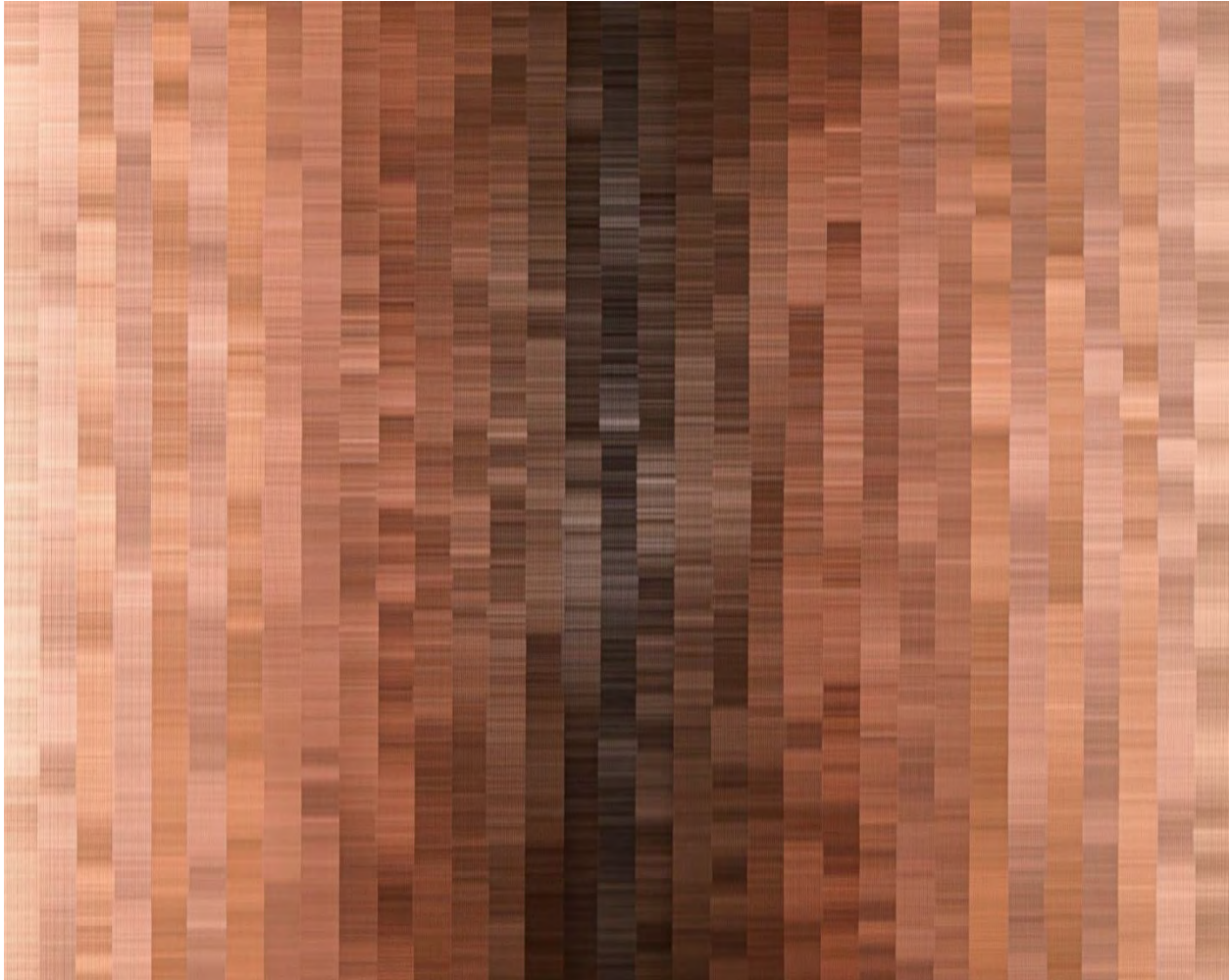
Blue Moon Rising

Hand Stitched Thread on Hand Dyed Textile

23 x 30.25 inches

Northeast Chapter

www.jeanjudd.com



Elizabeth Kazda

Threads of Humanity: Celebrating Diversity in Skin Tones, No. 1

Photograph printed on fine art paper
18.75 x 21.75 inches

Northeast Chapter

www.elizabethkazda.myportfolio.com



Elizabeth Sawyer Kelly

Creek Catch of the Day

Watercolor
15 x 22 inches

South Central Chapter
www.elizabethkellygallery.com



Michael Knapstein

A Day's Work III -- Father and Daughter

Archival Pigment Print

25 x 25 inches

South Central Chapter

www.knapsteinphotography.com



Annette Knapstein

Bleeding Heart

Archival Pigment Print - Photography
24 x 20 inches

South Central Chapter
www.annetteknapstein.com



Howard Leu

Cabbage in the American Cabinet

Photography

24 x 19 inches

Southeast Chapter

www.howardleu.com

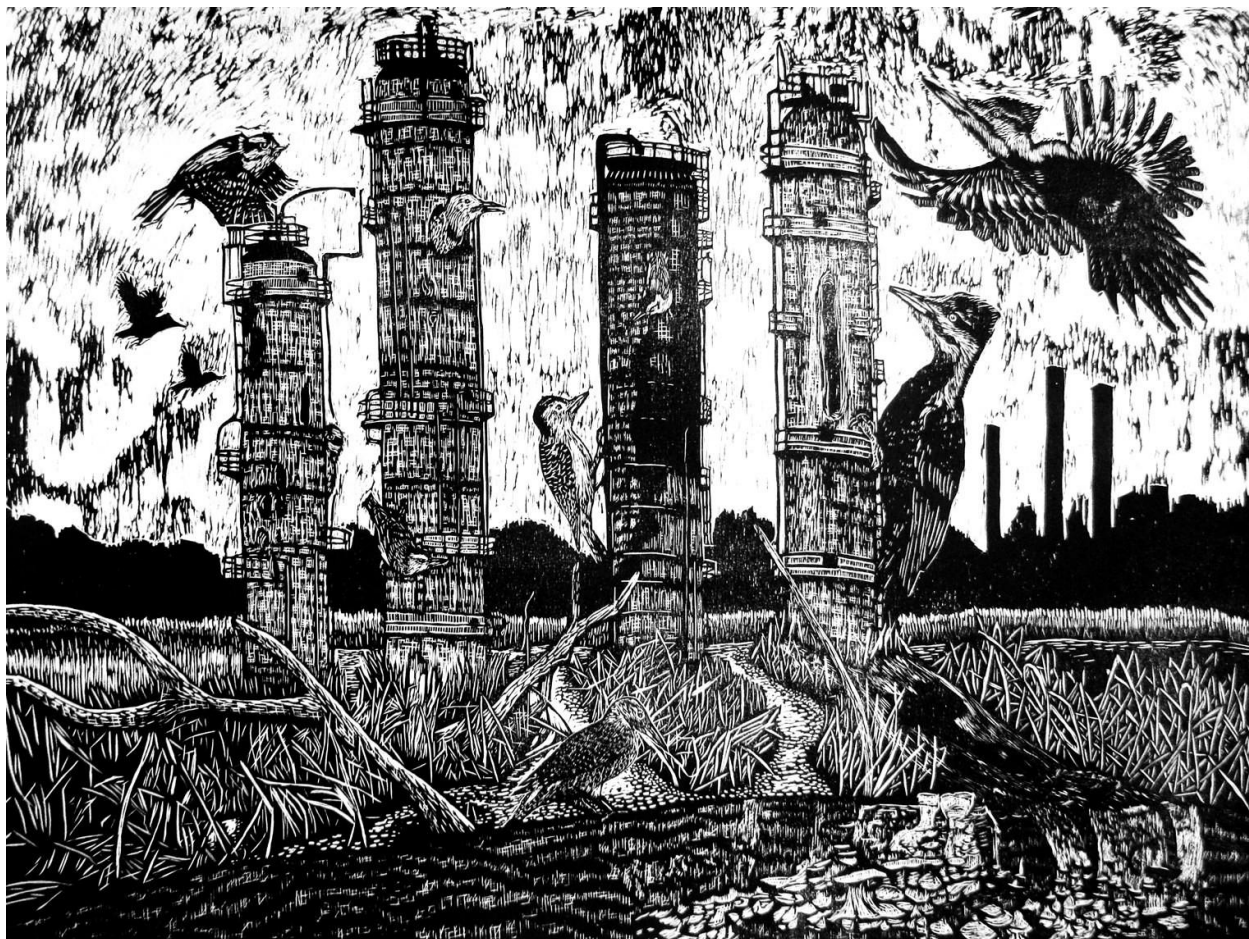


Michelle Louis

Rock Climbing

Acrylic on canvas
20 x 16 inches

South Central Chapter
www.michellelouis.com



Sara Meredith

Refinement Artists

Woodcut printed on Stonehenge paper
36 x 48 inches

South Central Chapter

www.smeretactics.com



Sara Meredith

What Connects Us

Mixed Media

96 x 48 x 120 inches

South Central Chapter

www.smeretactics.com



Andrea Meyer

Up From The Dust

foraged ink, foraged rock and clay watercolor
17.25 x 13.25 inches

Southeast Chapter

www.Andreameyerstudio.com



Christine Migala

Perspective

oil on canvas

30 x 20 x 2 inches

Southeast Chapter

www.christinesartdesigns.com



Steve Mofle

Willow

Digital Photography

24 x 16 x 2 inches

Northeast Chapter

www.moflephotography.com



Brendan Murphy

Graceful and Crumbling

Oil on Panel

54 x 42 x 2.5 inches

Southeast Chapter

www.brendanbmurphy.com



Janet Nelson

Autumn Song

Acrylic

36 x 36 inches

South Central Chapter

www.janetnelson.net



William L Nettelhorst

Wisconsin Prairie Bison

Sculpture willow,grapevine,native prairie forbs

78 x 103 x 42 inches

Northeast Chapter

www.theprairiehousestudio.com



Dennis Ninmer

Kayak Exploration

Photography

16 x 34 inches

Northeast Chapter

www.denniswninmer.photography



Joan North

Vessel

Silversmith Jewelry

1 x 1 x 1 inches

Northeast Chapter

www.joannorthdesigns.com



Laura Pahlas

January Moon

oil on canvas
24 x 30 inches

Northeast Chapter

www.heartworkstudios.org



James Peterson

Donald Driver (Signed)

acrylic on canvas

72 x 48 inches

Northeast Chapter

www.brusheswithfamellc.com



Anne Raskopf

Round Bales by the Woods

Artwork is acrylic on artist hardboard
19 x 19 inches

Southeast Chapter

www.anneraskopf.com



Cyndie Rauls

Fragments of My Imagination

Wooden sculpture and assemblage

86 x 26 x 16 inches

South Central Chapter

www.wanderbrookglen.com



Hugo Saavedra

Landscape

Wood (Mahogany)

10 x 16 x 24 inches

Southeast Chapter



Julie San Felipe

What in the World are You Thinking?/Is Your Head Full of Butterflies?

Watercolor on Paper with Wire and Amethyst Bead

16 x 9 x 15 inches

Southeast Chapter



Dane Schumacher

Rhinicervess

Oil on primed panel, spray paint on clear pine
18 x 18 x 2 inches

Northeast Chapter

www.schumacherdane2.wixsite.com/mysite



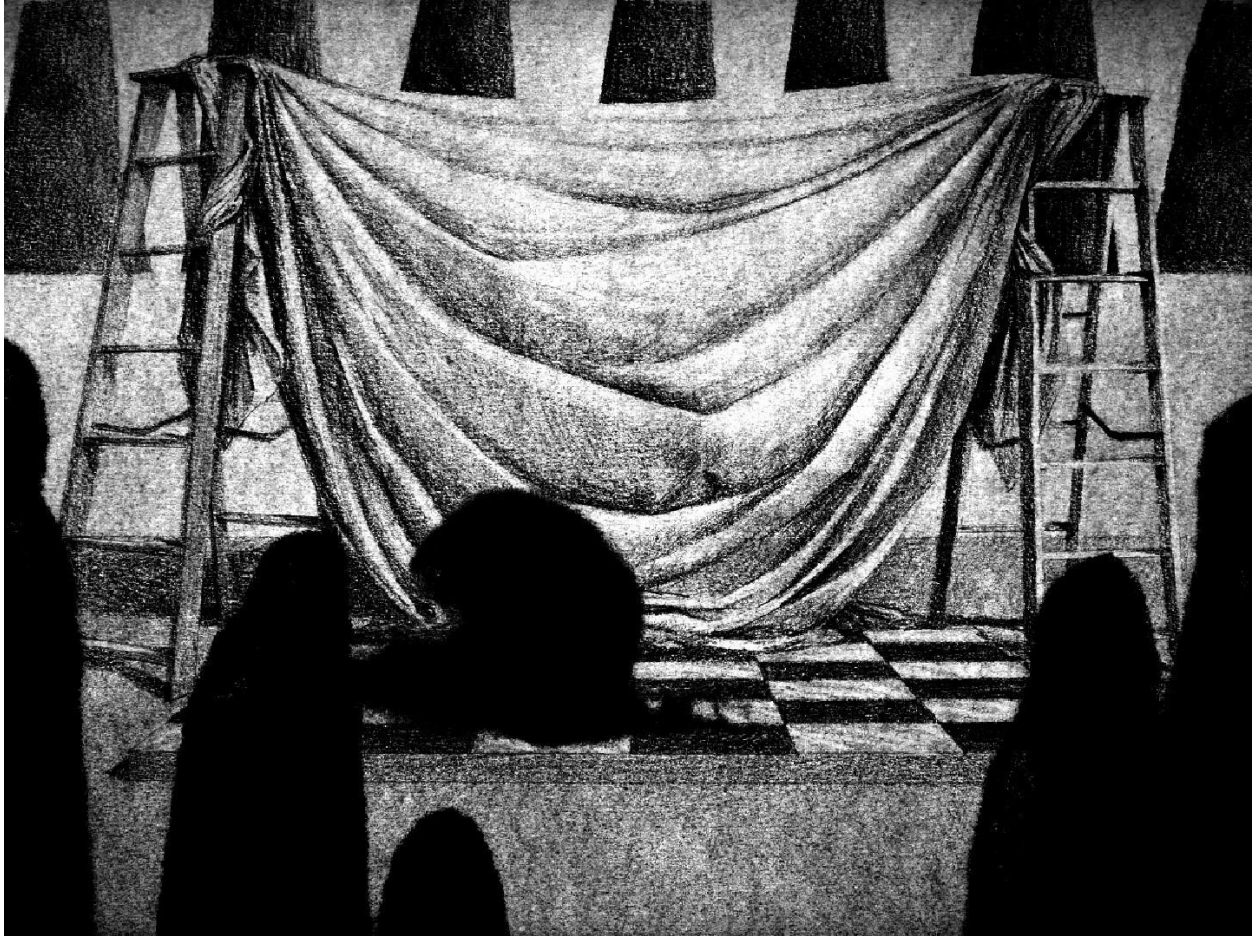
Tanya Steele

Can't Stand The Heat

Fine merino wool over wire armature

28 x 62 x 19 inches

Southeast Chapter



Adam Stoner

paradiso

video work (sand animation)

Southeast Chapter

www.adamjamesstoner.com/



Kimberly Strittmater

Remembrance

Oil on primed panel

9.5 x 14 inches

South Central Chapter

www.kimberlystrittmater.com



Christine Style

Birdgirl Contemplates Nature

woodcut print with chine collé©

53 x 33 inches

Northeast Chapter

www.christinestyle.com



Victoria Tasch

In Loving Memory: Carolina Parakeet

Book with screenprint & transfer prints on Rives

10 x 7 x 4.5 inches

Southeast Chapter

www.toritasch.com



Deborah Wage

Knowledge

Acrylic

16 x 12 inches

Northeast Chapter

www.deborahwage.com



Kaitlin Walsh

The Protective Sternum

Oil on Canvas
48 x 36 inches

South Central Chapter
www.lyonroadart.com



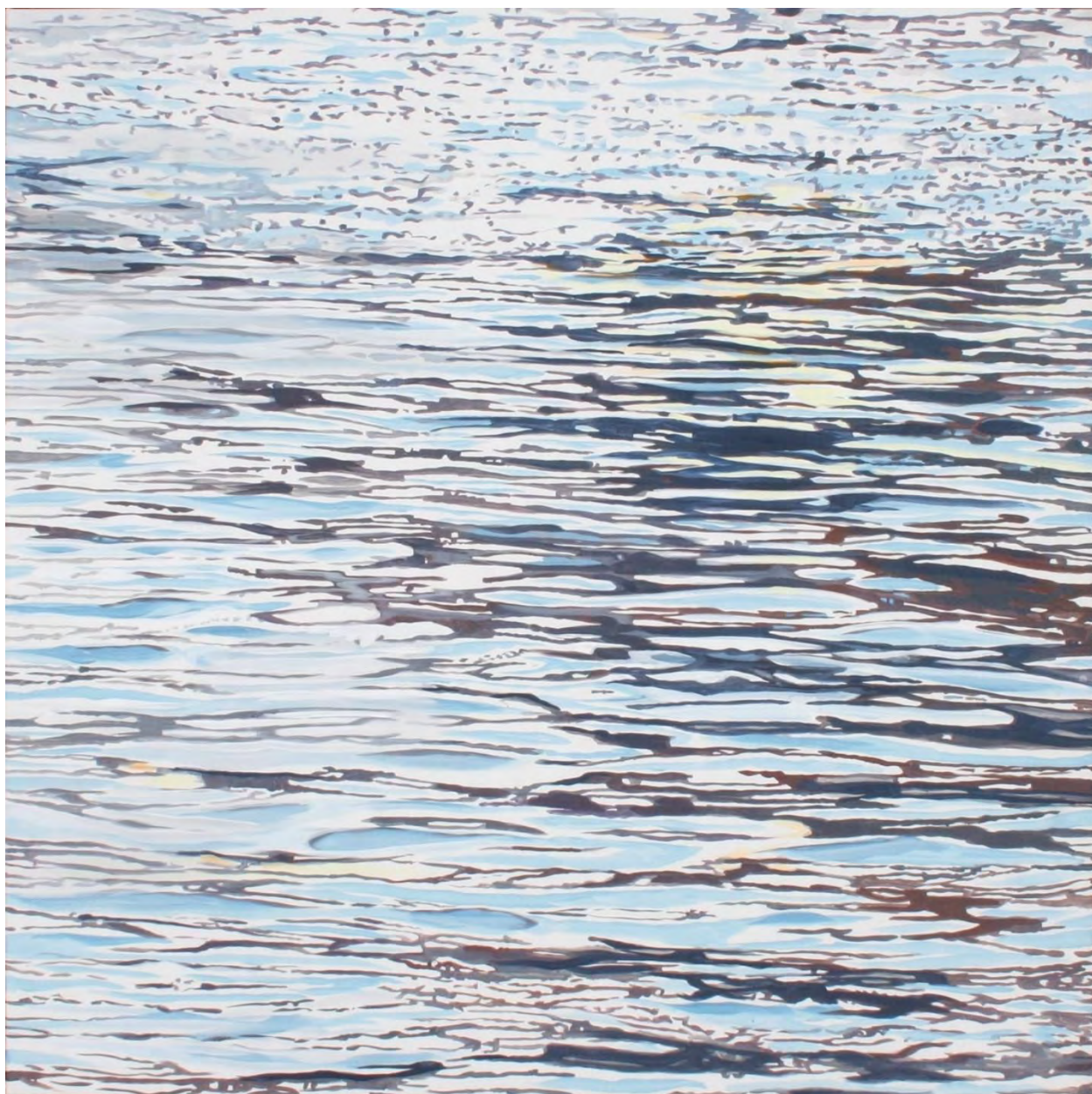
Terri Warpinski

from a Poem for the Abject: Empty Nest II

Archival pigment print with graphite
24 x 20 inches

Northeast Chapter

www.terriwarpinski.com



Kathryn Wedge

Rippled More

Acrylic on canvas
36 x 36 inches

Northeast Chapter

www.KathrynWedge.com



Joan White

Trying To Hold On

oil painting on maple burl wood

17 x 15 x 2 inches

Northeast Chapter

www.joanwhite.com



Ally Wilber

Knot

Soot

20 x 16 inches

Northeast Chapter

www.allywilber.com



Sara Willadsen

Duplex

mixed media on canvas

14 x 14 inches

Northeast Chapter

www.sarawilladsen.com



Isaiah Young

The Torment of Separation

Acrylic

84 x 60 x 2.5 inches

Northeast Chapter

www.isaiahart.com



Peggy Zalucha

Cuttings and Funnies Revisited

watercolor with collage on 3 dimensional canvas

26 x 30 x 2.5 inches

South Central Chapter

www.zalucha.com

The Wisconsin Visual Artists began in the year 1900 as the first professional association of artists in Wisconsin, and has continued for 121 years as an educational, supportive, and connective force for artists within the state. WVA offers a community and a support system to artists at any stage in their career. Because the organization is run *by artists for artists*, we are dedicated to the well-being and fair treatment of Wisconsin artists through the forging of creative partnerships, exhibition opportunities, monthly meetings, publications, programming, arts advocacy, and more.



www.wisconsinvisualartists.org