

MEMBERS'
CATALOGUE
2019

About



March, 2019

Wisconsin Visual Artists (WVA) is a not-for-profit membership-based organization made up of visual artists working in a wide variety of media and also includes supporters of Wisconsin Art. WVA is the oldest art organization in Wisconsin with roots that go back to 1900.

The purpose of WVA is to promote, develop and encourage the creative visual arts in Wisconsin. WVA organizes and sponsors several exhibits a year in various parts of the State as well as the Wisconsin Artists Biennial (in partnership with the Museum of Wisconsin Art), WVA is also one of the co-sponsors for the Wisconsin Visual Art Achievement Awards (WVAAA.com).

The history of the organization is long and storied. WVA is the oldest juried member art organization in Wisconsin. Founded in October of 1900, the association was formed by a group of painters and sculptors who met in Louis Mayer's Milwaukee studio and was originally called the Society of Milwaukee Artists. That group of men and women met and exhibited more or less steadily from that time until 1913, when the name was changed to Wisconsin Painters and Sculptors aka WP&S/WAAM. In 2008 the name of the organization was changed to WVA.

Visit our website at <https://wisconsinvisualartists.org> for more information.

**Wisconsin Visual Artists Members' Promotional Catalog 2019
is a copyrighted publication.**

©Wisconsin Visual Artists, Inc. 2019

**Copyrights for the artworks contained herein remain with the
Individual Artists.**

**No part of this publication may be duplicated or used for any
purpose without express written consent of Wisconsin Visual
Artists, Inc. and the Individual Artists.**

To Our Collectors, Galleries, Curators and Friends of Art, Greetings!

In recent years, Wisconsin Visual Artists has started taking a more proactive role in promoting our Member Artists, advocating for the arts in our State and involvement in our communities.

This catalog highlights the work of some of our Member Artists. It is meant to be used as a resource to identify Artists who may fill a need: Perhaps a Curator is seeking Artists who produce contemporary sculpture, traditional portraits, or dimensional abstract paintings for an exhibit. Perhaps an Artist is seeking a collaborator. Perhaps a business wishes to commission an artwork of a certain type or genre. With the diversity of work produced by these Members of Wisconsin Visual Artists, they are sure to find what they need. Artists' websites and/or contact information is included on each page, as well as an Artist's Statement.

You will notice a "Life Member" or "Professional" designation on some of the pages. Life Members are nominated for this honor and must have been members of WVA for more than 20 years, have achieved Professional excellence and have served both our organization and their communities. Professionals have undergone a jurying process and have met high standards in their professional development to earn this honor. Many of our other Members are also career professional artists who have simply chosen not to go through the designation process, yet others are still on their journey to professional renown. You will clearly see the incredible depth of talent in this showcase of Wisconsin Visual Artists.

Art by Wisconsin Visual Artists is around you every single day. We invite you to delight in the work of our Visual Artist Members from throughout the State, and hope you will consider supporting their work through exhibition opportunities or purchase for your home, business or community.

Find out more about Wisconsin Visual Artists on our website <https://www.wisconsinvisualartists.org>.

We hope you will enjoy this publication and will find it a useful resource. Please contact us if you would be interested in becoming a Benefactor of Wisconsin Visual Artists or are seeking artists for specific projects, residencies or instruction.

Terry Stanley, Executive Director
director@wisconsinvisualartists.org
Wisconsin Visual Artists
a 501(c)(3) non-profit organization

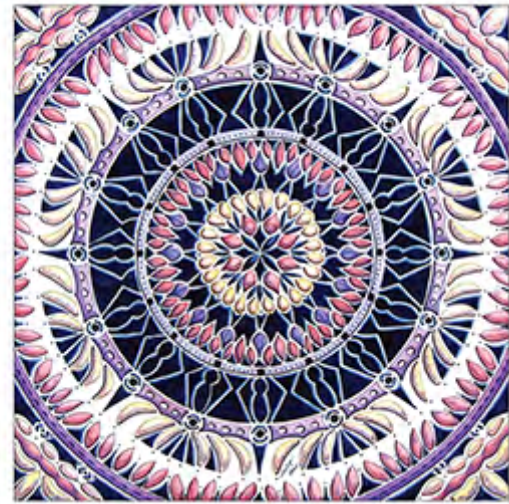


TAMLYN AKINS
BLACK EARTH, WI

<http://www.tamlynakins.com>

Professional

I knew before I could write my name that I'd be an artist. My focus on creating art is fundamental to who I am. So often we rush through life. I believe it's important to stop and take in the beauty around us. Sometimes combining the real with the imaginary, it is my intention to create imagery which fascinates, uplifts, and heightens the senses. I enjoy presenting unusual perspectives such as closeups of orchids, looking up through trees, organizing imagery into symmetrical forms, or the surprising three-dimensional elements of origami - encouraging viewers to use new eyes.



Christine Alfery's studio is nestled in the woods in Vilas County Wisconsin on a lake on an Indian Reservation. Christine shows her contemporary, conceptual water based paintings nationally and internationally. Christine has won over 100 national awards and is a signature member of 10 national watercolor societies. Laura Fiser, Curator of Collections at the Paine Art Center in Oshkosh, described her work as "an exceptional mix of spontaneity and expressiveness. Her palette is both understated and lush." Christine's mark making are visual symbols such as ladders, wheels, and other playful things. Christine tells stories with these visual symbols about things she loves and cares for.

CHRISTINE ALFERY
LAC DU FLAMBEAU, WI

<http://www.christinealfery.net>

Professional



**KRISTA
ALLENSTEIN**
ELM GROVE, WI

Krista Allenstein has a passion for all things gently used and loved. Vintage maps find new life in her oil paintings. With a little tweaking in oil paint, roadside motel neon signs become beacons of hope, love and the power of positive thinking. Krista paints directly onto maps from 1940-1970 affixed to hardboard. Finding the right map, the right sign inspiration and perfect phrase make every piece a new challenge. The neon signs featured are often no longer in existence yet live on in her works of art.

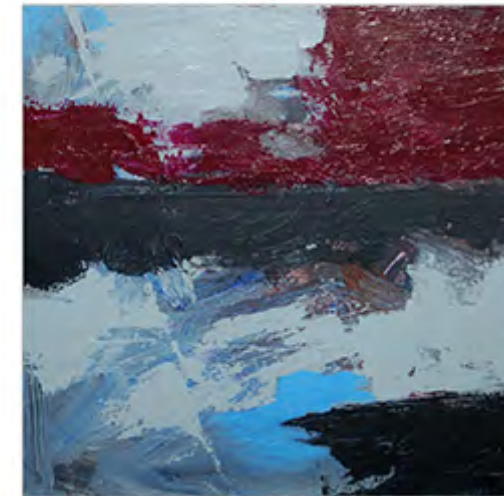
<https://www.followthesignspaintings.com>



I create paintings that are most often influenced by nature. I draw heavily on the Wisconsin landscape but also find inspiration from other places where I have traveled as well as from my own garden. Working with either acrylics or oil and cold wax, I develop each piece in a very gestural manner. The unpredictability with my style of painting is always very exciting and rewarding. My goal is to create expressive, rich, colorful and multilayered paintings that capture the viewer's eye as well as heart. My work can be found at www.ianbakergallery.com.

**IAN
BAKER JOHNSON**
GLENDALE, WI

<http://www.ianbakergallery.com>



HOLLEY BAKICH
MILWAUKEE, WI

holleybak@yahoo.com

Also on Instagram @holleybak

My subject is humanity. The human form is beautiful and varied, but inner lives are equally fascinating. My sideshow sculptures comment on the narrow definition of beauty. The rest of my oeuvre explores the mythology and stories that animate and define our lives. Craftsmanship, through the use of traditional processes, is my goal. Beads, sequins, metal leaf, all have a shimmering quality that imparts life and spirituality. Hand-sewing leather and fabric takes time and patience, as does working with wood, giving each work a part of myself through the meditative creative process.

Professional



Artist and teacher Jane Barnard is a member of the Wisconsin Watercolor Society, Wisconsin Visual Artists, Plein Air Painters of Wisconsin. She holds a Master's Degree from Marquette University, and a Diplome Annuel from the Sorbonne, the University of Paris, France. She teaches at Dillmans and The Clearing, Door County. She was awarded a summer scholarship in 2010 to the Women's Art Institute at Minneapolis College of Art & Design. She has led 2 Art Workshops to Provence, France. In 2018 she was accepted into a 2-week Artist Residency in Tuscany, Italy.

JANE BARNARD
STEVENS POINT, WI

<http://www.barnardstudio.com>

Professional



TIM BLACK
BOULDER JUNCTION, WI

<http://www.gtimblack.com>

Professional

The end product of any painting has very little to do with the first splashes of paint. There is no beginning idea and if there is in the end, it has been lost under layers of paint. When the paint surface begins to build up the painting starts to come to life. From somewhere in my subconscious the colors and shapes start to grab hold of me and say: "This is a what we want to say." When the painting has spoken, I give it a voice.



A Wisconsin native, and mostly self taught, Bobrowitz began creating larger than life sculptures in 1989. His work initially incorporated found objects, mostly farm machinery, glass and stones, with special emphasis on movement. Over time his passion for using repurposed materials expanded, so too did the variety of metals such as stainless steel, brass, aluminum and copper. 1990 hallmarked the opening of a outdoor gallery which presently includes a 6 acre walk-through sculpture garden and indoor gallery featuring an assortment of interior artworks and wall sculpture.

PAUL BOBROWITZ
COLGATE, WI

<http://www.bobrowitzsculpture.com>

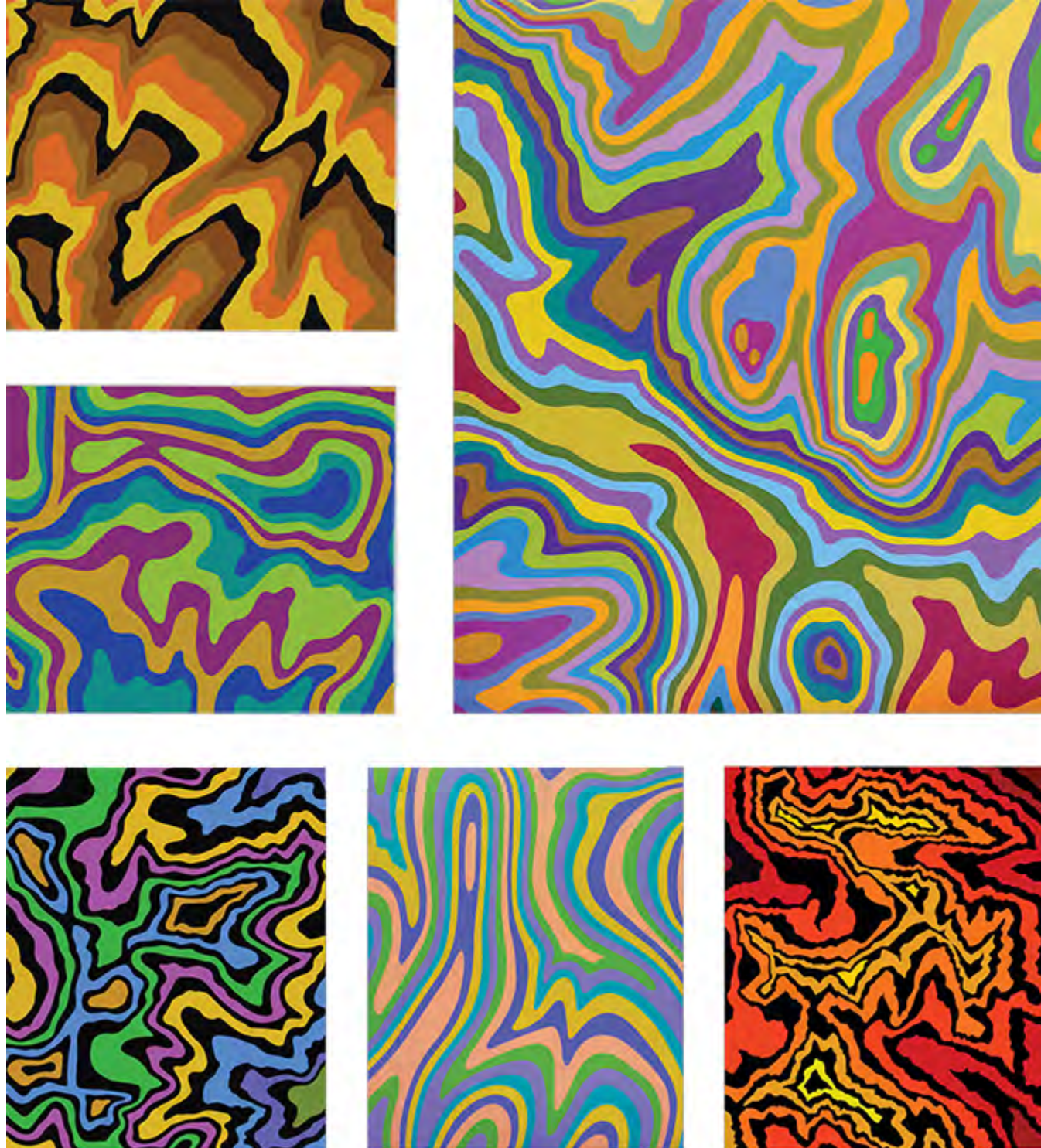
Professional



LARRY BOOTH
FOX POINT, WI

larrybooth444@gmail.com

Larry Booth's art draws upon the earth's topography for its inspiration. His work artistically depicts the remarkable designs carved into the earth's surface by the random forces of nature. Each piece is based upon the topography of an actual landform such as a mountain or canyon. Booth's goal is to create bold and intriguing art that stimulates the viewer's curiosity and challenges their perception. He also wants his art to inspire people to look at the natural landscape in a different way so that they too will come to appreciate the magnificent design of the world around us.



My paintings are bold, muscular and loud fusions of abstraction and figuration that combine visual oppositions in ways that invite the distorted or grotesque as much as the lyrical. With methods of facture that speak to both the rational and irrational such as adjustment, removal, embellishment and demolition, I build images that are not predetermined, but instead, develop through successive layering providing viewers with an opportunity to witness chance and intention mingle and converse within the conflicting parts of a whole.

BRIT BORCHER
WISCONSIN DELLS, WI

<http://www.britborcher.com>

Professional

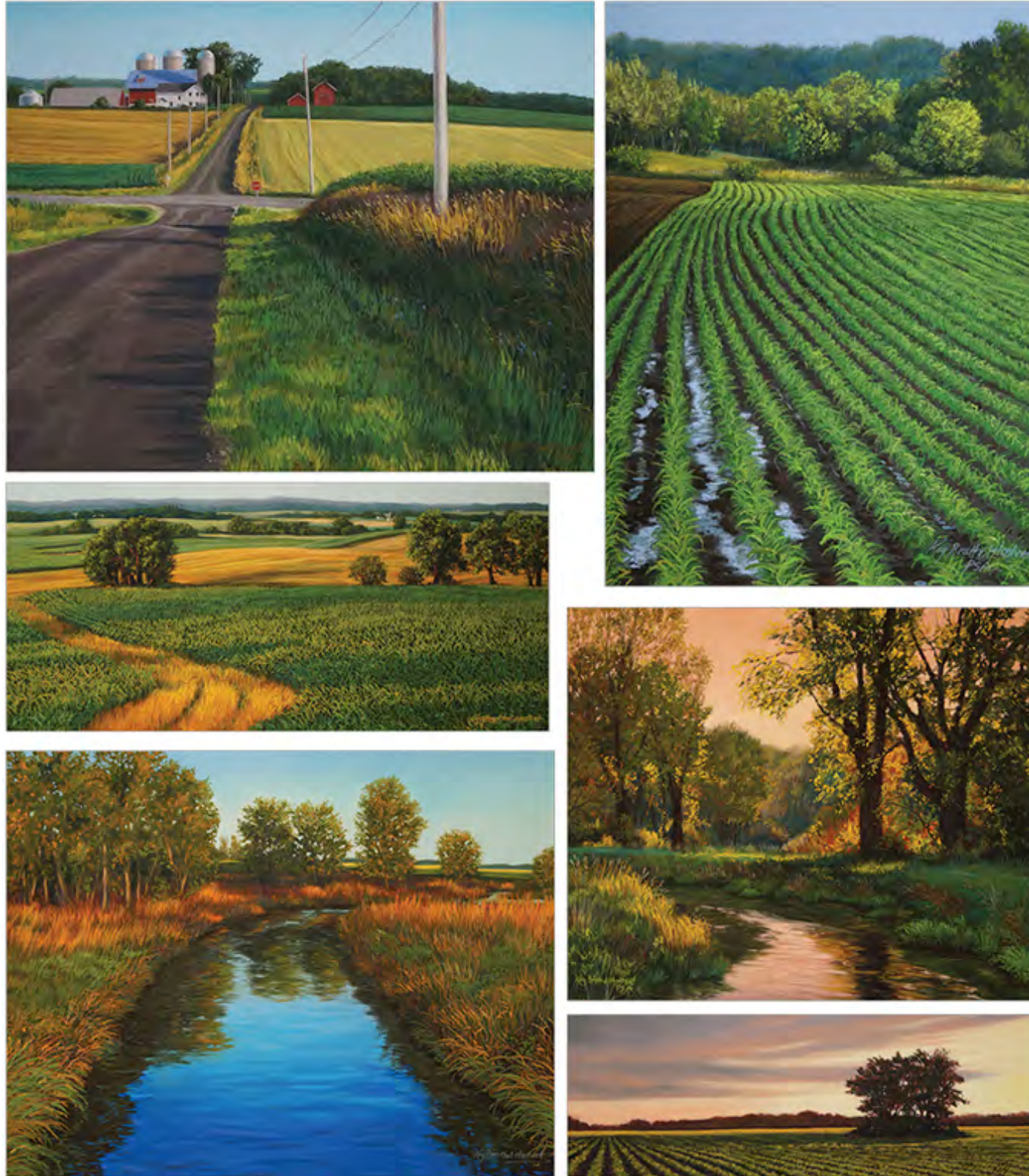


**KAY
BRATHOL-HOSTVET**
EAU CLAIRE, WI

<http://www.kaybratholhostvet.com>

Professional

For almost three decades, my primary creative focus has been the Midwestern landscape—a synthesis of the American landscape tradition and self-expression. I am particularly interested in the concepts of “expectant stillness,” sometimes called the pregnant moment. My works have been referred to as Contemporary Regionalism and emotive landscape. I am a Signature Member of the Pastel Society of America and currently represented by Abel Contemporary Gallery, Stoughton, WI; Riverwood Art and Frame, Eau Claire, WI; and Edgewood Orchard Galleries, Fish Creek, WI.



Sunlight, which casts shadows and sets a mood captures my attention. Rituals of birds and animals fascinate me. Details and textures of habitats and surroundings add to my desire to depict a moment in time. Through painting I try to capture a sense of place and the unique characteristics of each subject or area, which resonates with me. When the opportunity arises I find joy in adding small, subtle, personal symbols of life into areas of my paintings. I am currently represented by Edgewood Orchard Galleries, Fish Creek, WI and Wild Wings LLC Lake City, MN.

JULIE BRIEDE IBAR
NEW BERLIN, WI

<http://www.julieibar.com>



BONITA BRUCH
MILWAUKEE, WI

contact: bonitaartwork2@gmail.com

Bonita is a visual artist who strives to create painterly, stylistic portraits of people caught unaware in a moment of time...a moment we all may experience. She prefers to work mostly with conte crayons, oil pastels and caran d'ache. Most of her portraits are developed from 5, 10, 15 minute sketches. Her conte crayon and pastels are soft, muted and show her mastery of smudging and smearing people into their story. Her acrylics and caran d'ache landscape paintings are bold, loud, noisy and sometimes sassy. Bonita is the artistic name of Bonnie Berglund Bruch.



Growing up on a dairy farm in central Wisconsin during the WWII years gave me a sincere appreciation for nature and animals. I've always drawn and made things, so my most recent and serious explorations are in a weaving and sculptural direction. I really enjoy experimenting to see how I can stretch what I know into something totally new. I love learning!

Using fabric, reed, beads, willow, grapevine, gourds, stones, sticks... whatever I come across. I try to combine it into something expressing beauty, humor, homage to nature.

NANCY BRUINS
BLACK EARTH, WI

<https://www.nancybruins.com>

Professional



BARBARA BUDISH
MILWAUKEE, WI

<http://BarbBudishDesign.com/BBD-Home.html>

Professional

I started taking an avid interest in art and photography at a very young age. With many years as a professional senior graphic designer, I've developed my skills in digital art and in my experiences doing event and exploratory photography. It has brought me into the realm of fine art and conceptual photography. This passion transcends into my images which evoke my personal vision and the emotion it made me feel at the time. Along with my website and Flickr accounts, my Instagram is @barbb_design. When opportunity arises, I also delve into painting and drawing.



I've been an artist and writer since I was very young. Words and images have always been linked for me when it comes to expression and creativity. I like to paint with vibrant colors that offer a positive, hopeful message. Sometimes this is done with whimsical animals, girls, or flowers and other times it combines words and poetry. For me, art is all about emotion. I enjoy mixed media because it makes painting a new journey, one that is about uncovering the image I want to convey as much as it is creating it.

CHERIE BURBACH
OOSTBURG, WI

<https://www.cherieburbach.com/>

Professional

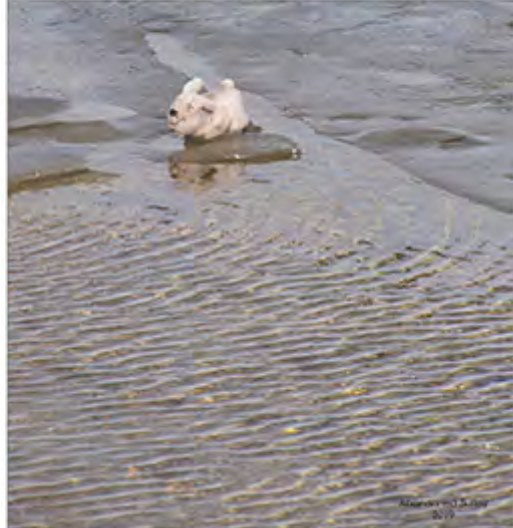
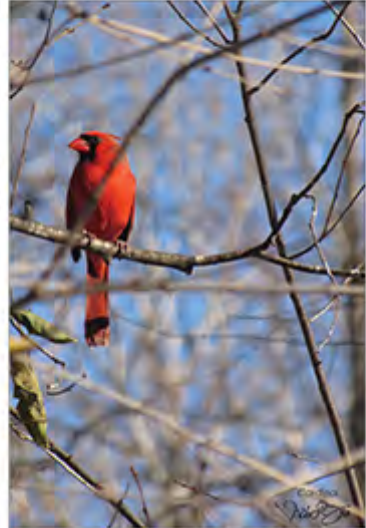


DEB BUSHY
MADISON, WI

<http://Dbushypaints.wixsite.com/Debra-Bushysart>

Professional

I walk familiar paths of the natural world almost daily. The landscapes, people and wildlife change quickly. Day to night: Light, shadow, seasons, the phases of the moon are all a process of continuous evolution. I hope to capture a fleeting glimpse of this evolution with my camera lens or paintbrush. My artwork is a personal story that I share with you. My passion as an artist/creator is expressed by photography, painting and craft work. I always encourage originality so commission work is encouraged. I'm represented by Stone Fence and Cosmic Delight, Madison, WI.

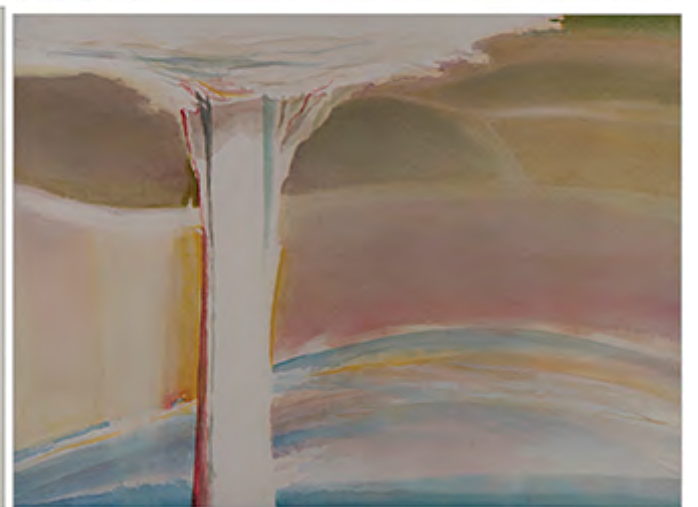


I create images on paper which suggest a presence in an environment or an absence of one and evoke an emotional response. My water media paintings, drawings and photographs are abstracted interpretations of places experienced, spaces navigated and those imagined. My work documents my creative and critical thinking. I currently work in series titled "Empty spaces," "Trees and light" and "Landscape in a box". I am a lifetime member of WVA.

CHRISTINE BUTH-FURNESS
BROOKFIELD, WI

<http://www.chrisbuthfurness.com>

Life Member

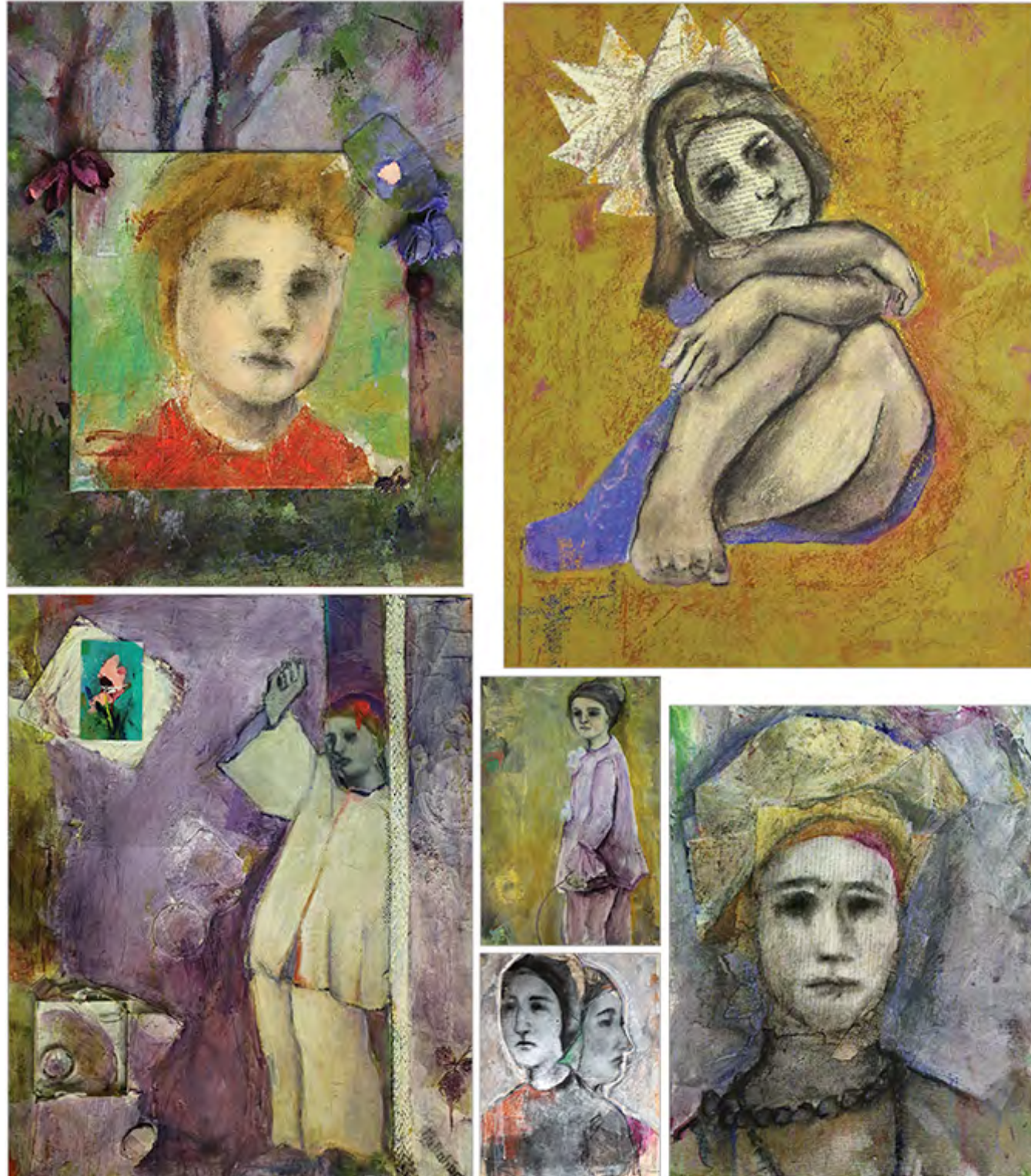


DEBBIE CALLAHAN
WAUWATOSA, WI

<http://www.debbiecallahan.com>

I have always been an artist, and have never doubted it,
Drawn and painted as soon as I could be trusted not to decorate the walls. There have been lulls, distractions, but most were short lived.

Many of my paintings are of me, but me as a young girl, trapped in a difficult and unstable family. It was an unsafe world to express myself, and now with relief I speak in painting after painting of that world-in the process letting go of some of the carefully held secrets.



Prolific-or just obsessed? That I have created owls in various media for over fifty years is almost unbelievable, even for me. However, few creatures, can be represented in so many different ways and still be identified. I strive to capture the essence of owls, but I found myself with the discovery of soapstone in 1983. Many sculptors have said, "The stone will tell you what is inside." With me, owls should be expected. My work has been included in the international "Birds in Art" in Wausau over a dozen times and I have been a member of the Society of Animal Artists since 2013.

CLARENCE CAMERON
MADISON, WI

<http://www.owlman.com>

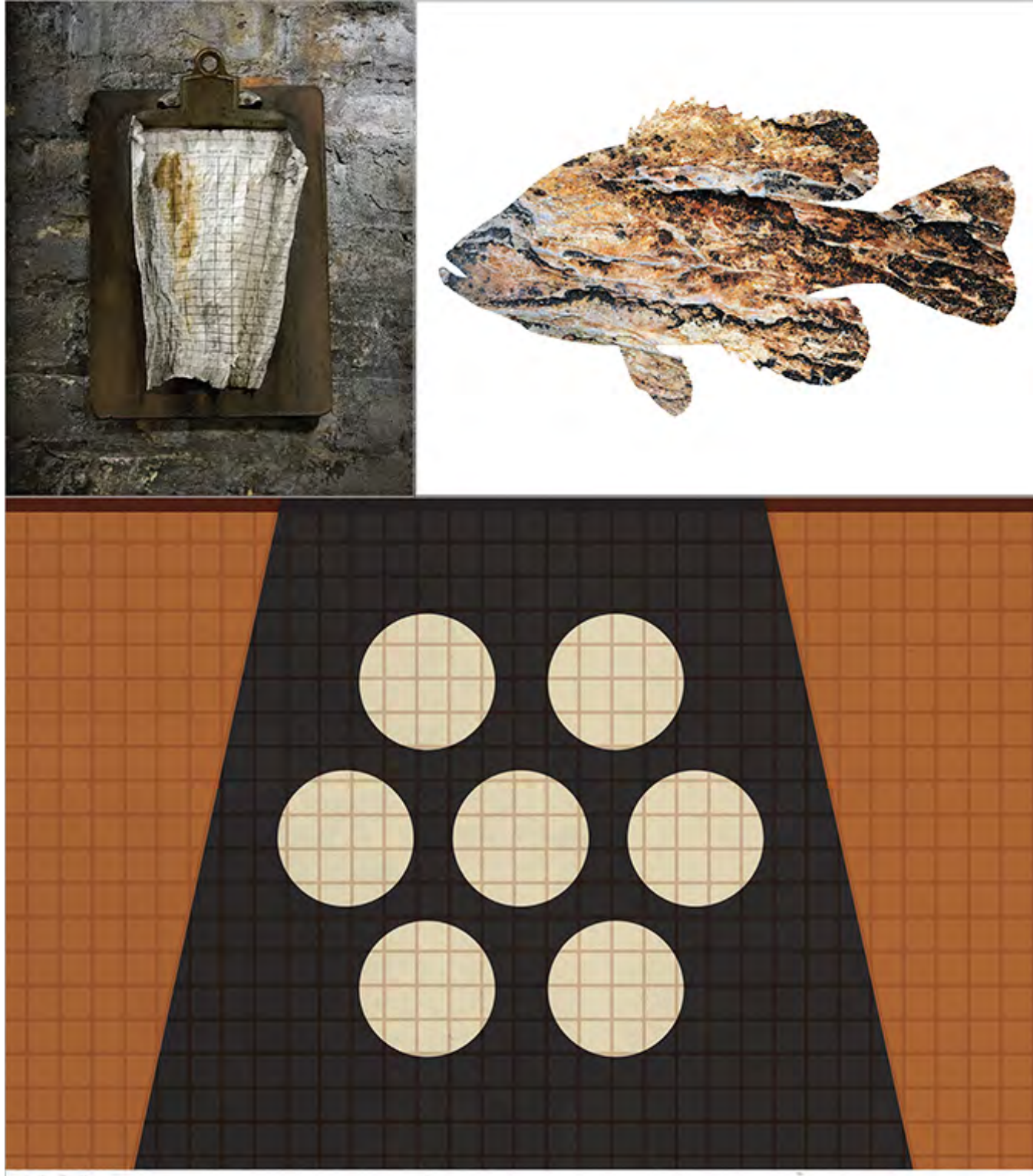
Professional



TRACE CHIDO
MOUNT PLEASANT, WI

<http://www.tracechiodo.com>

My passion is storytelling. The work I create is always a thoughtful reflection of my experiences, surroundings and passions. Beyond design, color and texture, key ingredients of my art include curiosity and honesty mixed with a deep desire to create something special that tells a broader story. "The Striking Faces of Golf" series, for example, developed from my lifelong passion for golf into an idea to illustrate the faces of vintage golf clubs. Distilling them down to a basic visual language, line, shape, and color characterize the individual beauty of each club.



My photomontages juxtapose textures of distinct environments with figures, expressing the symbiotic relationship between them and the nature of human beings' introspection about that connection. Foremost in my thoughts is that the inner structure of the mind's neural nets and the body's circulatory system are dynamically reflected in nature's structures and textures. "We are a part of, not apart from, the rest of nature." Anil Seth Subsequent to that is the perception that much of humankind's behavior negatively impacts nature, which comes full circle to impact our existence.

VALERIE J. CHRISTELL
BURLINGTON, WI

<http://www.vjchristell.net>

Life Member



**CATHYJEAN
CLARK**
NEILSVILLE, WI

<http://www.hummingbirdpress.org>

Professional

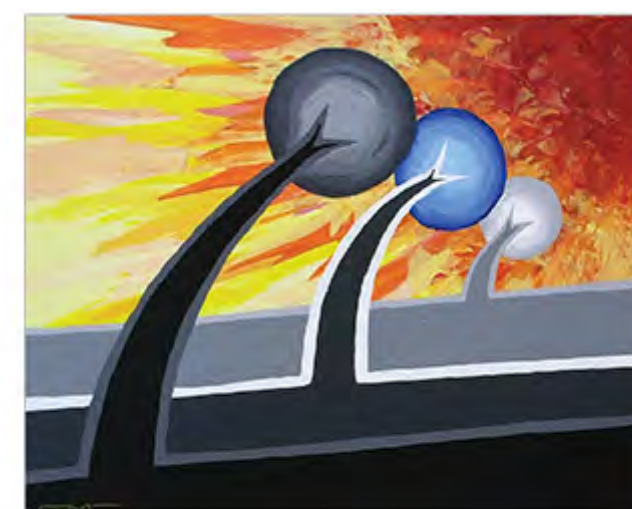
CathyJean Clark lives and works in rural Central Wisconsin on an original farmstead near the beautiful Black River. She works fulltime in a small functioning intaglio studio, Hummingbird Press, which is located on the farm, steps from her farmhouse. She received a BFA in Drawing and Prints from the University of Wisconsin Eau- Claire and an MFA in Printmaking from University of Wisconsin - Milwaukee. Her work focuses on mixed media intaglio works along with mixed media drawings. The work expresses the spiritual and mystical forces that she experiences as nature.



My art is a personal evolution through experimentation of how paint is applied and how the canvas is presented; recently, I have been painting with palette knives and cutting holes into the canvas to create more surface texture and space. I still enjoy bright and contrasting colors, line, shape, and, how all those interact to create an interesting composition.

**CHAD M.
CLEVELAND**
MENASHA, WI

<https://www.facebook.com/ChadMCleveland/>

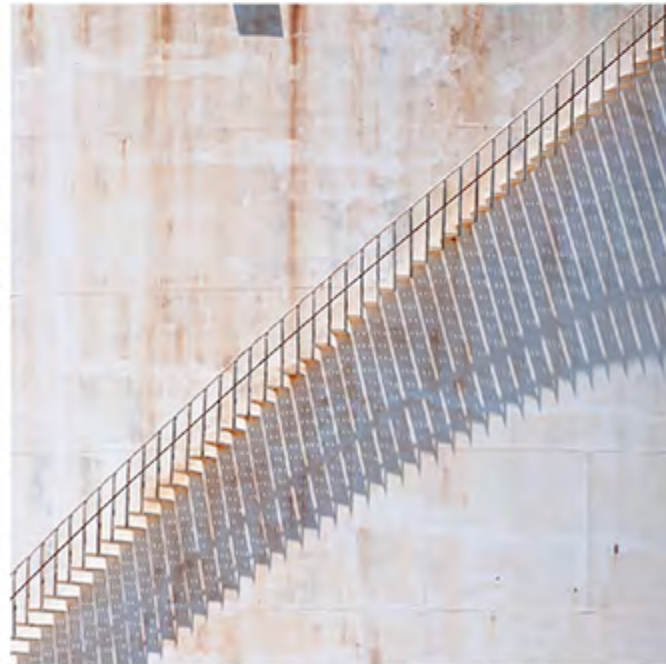
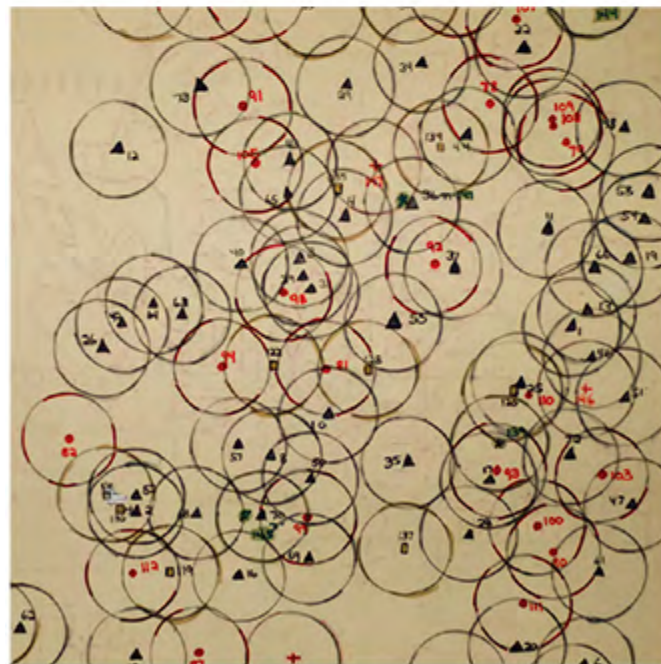
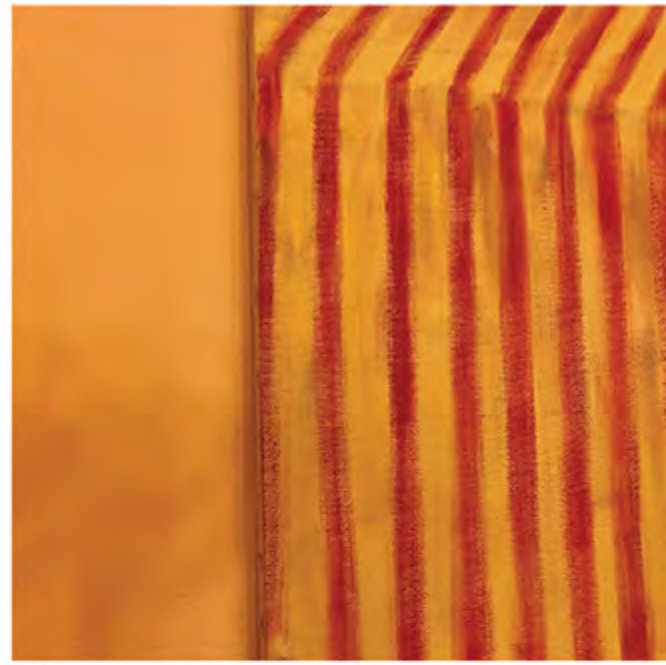


MARTHA COATY
RACINE, WI

<http://www.marthacoaty.com>

Professional

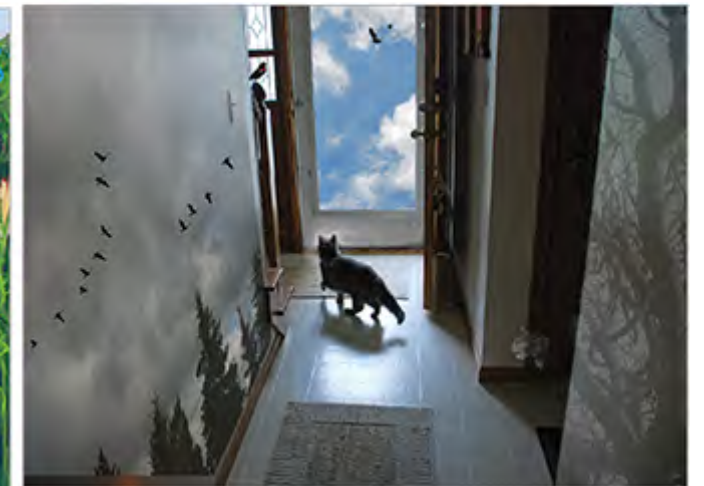
My general interest is finding spots of color in the largesse of Great Lakes industry. Compositions featuring elements of art and design allow the viewer to experience simplicity. Finding geometric shapes and color on the landscape, I seek stillness to represent the peacefulness of my subjects and to create curiosity out of the abstract. I work digitally to produce photographic prints using chemical and light.



JEANNE COLE PANKA
WAUKESHA, WI

[contact: jcpanka@att.net](mailto:contact:jcpanka@att.net)

I am continually delighted with the natural world. It has the ability to mystify and refresh me. Wisconsin provides endless inspiration for my subject matter. Whether I work with soft pastels doing landscapes, pencil and watercolor botanical drawings or creating whimsical digital photo collages, nature is always the catalyst for my ideas.



**JANE CONSTABLE-
HOSTETLER**
DEPERE, WI

<http://www.bluedoorartworks.com>

Professional

My collection of work is influenced by intense observation of the environment, decomposition, and renewal, while focusing on texture and color interaction. Having been influenced by the study of ancient primitive works from all over the world, as well as contemporary graphic design, my work often draws from the pure design content of each. I work in either cold wax painting techniques or acrylic/fresco mixed media as the medium to produce an ongoing series of abstract works. It is my goal to engage the individual viewer allowing for visual interaction and personal reflection.

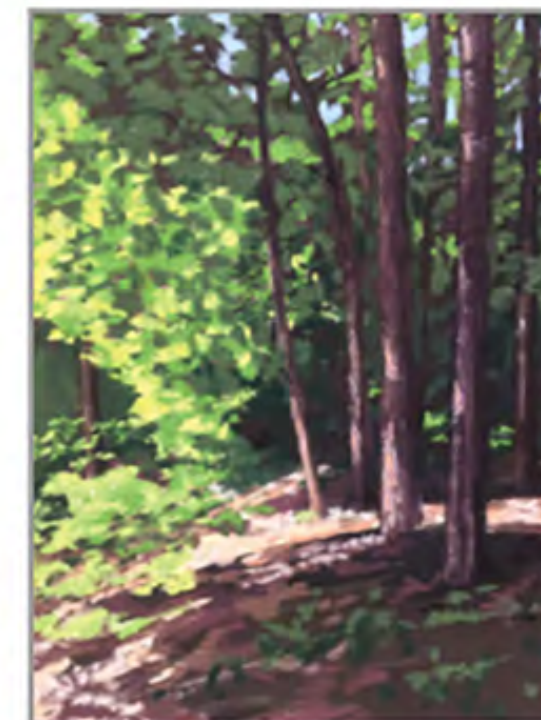
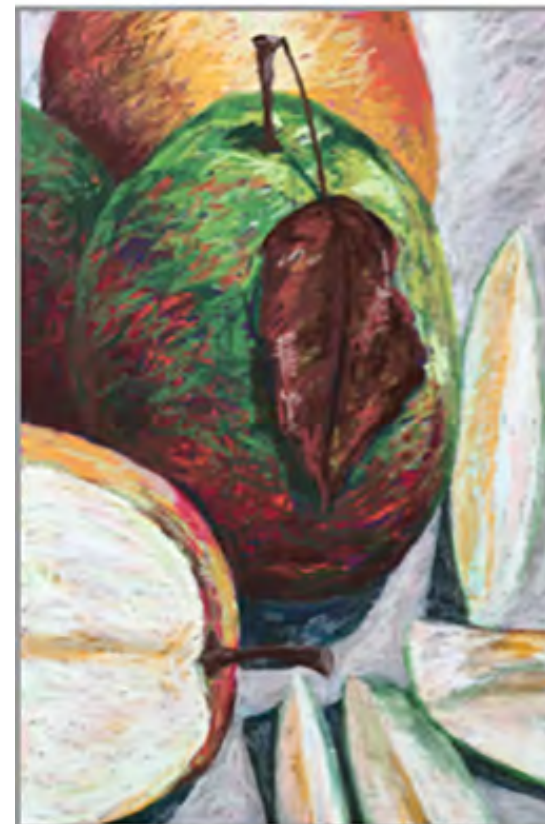


I find natural objects very engaging. There is much to see when the sun shines on a piece of fruit or washes across a field. For me, the shadows are as important as the light, by providing both contrast and the mystery of what is hidden. Soft pastels, in combination with various papers such as sanded and textured supports, have allowed me to explore these everyday objects and portray their energy and vitality. The experience of attaining flow while immersed in artistic expression is hard to surpass. It connects to a focus that allows a thorough engagement with the creative process.

WENDY CRONE
MCFARLAND, WI

<http://www.WCCrone.com>

Professional



**MEREDITH
DRAGOVICH**
ARGYLE, WI

<https://www.facebook.com/MerryDragovichGallery/>

Mosaics: The way the light reflects off the tile! At night, colors change and sparkle. Daylight warms the image. Electric light enegises, creates new ways to see the same image. The tactile surfaces, asking to be felt as well as seen provide another, sculptural dimension. I do many types of mosaics; table tops, hanging pieces, bottles, vases, etc. Each presents a new challenge and experience. I gravitate towards figures, faces, people and portraits. Reflections of changing vibrant personalities.



I have always made art, of one kind or another. Growing up, I filled my spare time with drawing, painting, and making assemblages from found objects. Throughout high school and college I focused on drawing, painting, and graphic design.

While completing my art education coursework I happened upon a ceramics class at UW-O taught by Paul Donhauser and fell in love with clay. The functional ceramics of Warren McKenzie remain a great source of inspiration. And a trip to Italy in 2009 inspired me to return to my first love, oil painting. I make art to express thoughts and emotion

**KATHRYN
DREIFUERST**
OSHKOSH, WI

<http://www.kathryndreifuerst.com>

Professional



**VIRGILYN
DRISCOLL**
OCONOMOWOC, WI

Contact: virgilyndriscoll@gmail.com

Life Member

For years I concentrated on being a figurative painter. I now do large abstract oil paintings, creating that which is not possible from life. Using webs of color, turning a blank canvas into a mystery of inner realities, is my approach to abstract painting. I hold a MS in painting from the University of Wisconsin-Milwaukee and have also studied with painters of national reputation. In addition, I create ink and mixed media paintings addressing social issues, and continue to do oil portraiture and life drawings as well. My work has been exhibited in local, state, regional and national exhibitions and has received awards over the years.



Audrey is a painter who works in soft pastels and oils. She is inspired by the landscape, both near and far. Audrey has travelled extensively, painting on location and in her studio. She has exhibited nationally and her work is part of numerous collections

AUDREY DULMES
FOX POINT, WI

<http://www.audreydulmesart.com>

Professional



PATRICIA DUREN
CAZENOVIA, WI

<http://www.patriciaduren.com>

Professional

Bringing fresh color and capturing the light with intentional marks is my goal for a successful painting. I am inspired by many artists and I paint from a variety of subject matter - landscapes to portraits. Most recently, the subject of my paintings are of a rural narrative that includes old farmhouses, freshly mowed fields, meandering streams and or grazing cattle. I enjoy working in both oil and pastel, on location-en Plein Air, and in my studio using my photos as reference. My work is exhibited in group, solo and juried shows in Wisconsin. My studio is located in Cazenovia, WI.



Joyce has a BA in Art Education. Her love of nature and the complexity of beautiful found objects has influenced many of her watercolor paintings that are created using only the three primary colors in warm and cool hues. Many layers of paint are applied to achieve the variety of values. She enjoys the challenge and learning experience of each new painting and is driven to push herself further into her desire to produce paintings that will draw others to. Her artwork consists of realistic representations of nature's beauty and interesting objects with reflective surfaces.

JOYCE EESLEY
MILWAUKEE, WI

<http://www.joyceesley.com>

Professional



TERRI EINER
OSHKOSH, WI

<http://www.terrieiner.com>

If a piece of my art brings a smile to the viewer, my goal has been reached and I am fulfilled. It is often remarked that I must just be dancing and smiling when I am in my studio. My work is about colors that sing, objects that demand attention or critters that contain whimsical wonder. My florals are impressionist, with little attention paid to the type of flower represented rather than the play of color combinations. Always creative, I have dabbled in various art forms my entire life. In my backyard studio, all my cares disappear.



Terry A Fischer finds her inspiration in the lush lands all around her. She uses flowing watercolors to interpret spring's endless shades of green, the crisp sparkle of refreshing lakes and shifting rivers, and the dramatic or muted tones of Wisconsin's many wildflowers. She finds portraits of both people and pets to be especially challenging and rewarding. Her works have been shown in Kenosha's Anderson Museum, Kenosha Art Museum, The Wustum Museum in Racine, Cedarburg Cultural Center and the Milwaukee Art Museum among others and are included in many private collections.

TERRY A FISCHER
MUSKEGO, WI

<http://www.TerryAFischer.com>

Professional

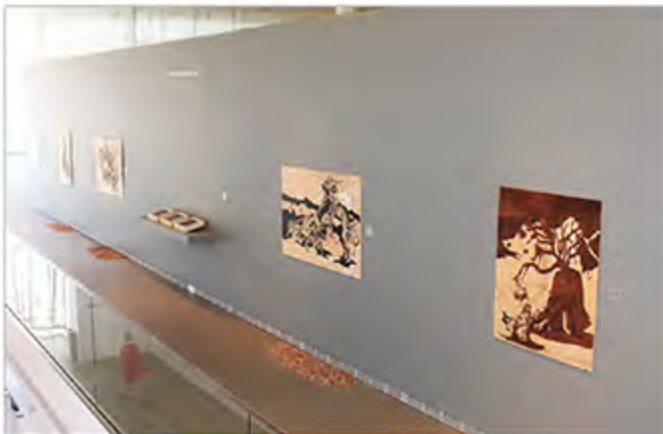
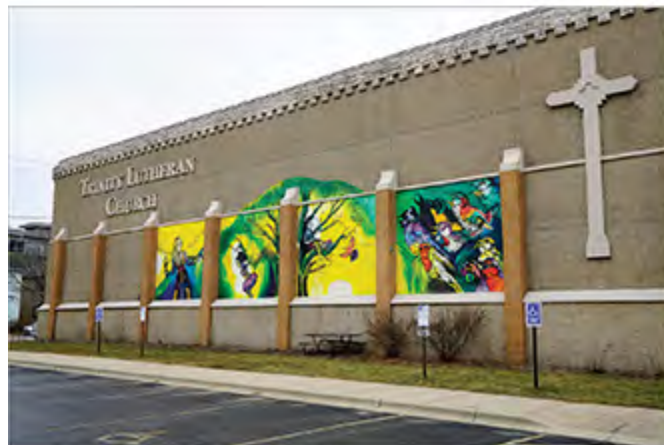


JENIE GAO
MADISON, WI

<https://jenie.org/>

Professional

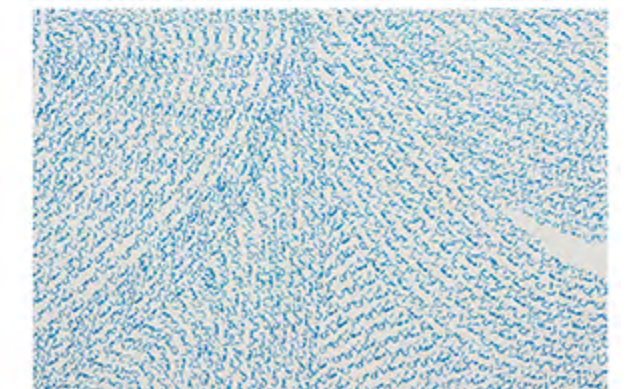
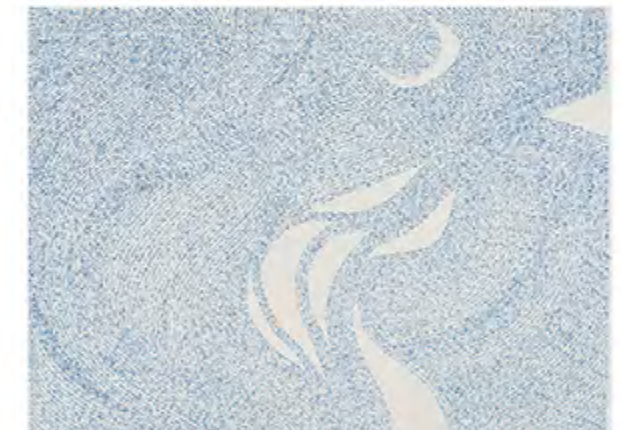
Jenie Gao is a full-time artist, creative director, and entrepreneur. She specializes in large-scale projects, printmaking, murals, and public art installations. She strives to make work that become cultural cornerstones and community landmarks. Jenie has worked in for-profit and nonprofit businesses, in the arts, education, and lean manufacturing. She advocates for creativity as a tool that builds connection, resilience, and community citizenry. Jenie has shown at Museum of Wisconsin art, is a former TEDx speaker, and has had her work collected and published internationally.



Nina Ghanbarzadeh who lives between two cultures (American-Persian) finds herself translating constantly. She tries to avoid this by situating text as a place for shifting perspectives in her art. How communication gets affected when written text steps out of its traditional function? Is it even necessary to translate when text acts as color or shapes in work of art? Ghanbarzadeh writes repetitive lines of text that unfold into pattern and shapes, which depict her emotions at a specific moment of time. She is inspired by Persian poetry and memories of her birthplace.

**NINA
GHANBARZADEH**
NEW BERLIN, WI!

<http://www.ninaghanbarzadeh.com/>



**COLETTE
GIRARD**
MADISON, WI

<http://www.ColetteGirardPhotography.com>

Professional

My artwork is inspired by Miksang, a form of contemplative photography which seeks to clearly see and to appreciate the vividness of the visual world. I photograph everyday objects, viewed from a unique perspective. My images focus on bright colors, reflections and subtle shifts of light. All are actual photographs and are not digitally generated. Some images are infused into metal to enhance luminescence while others are printed on canvas to highlight texture.

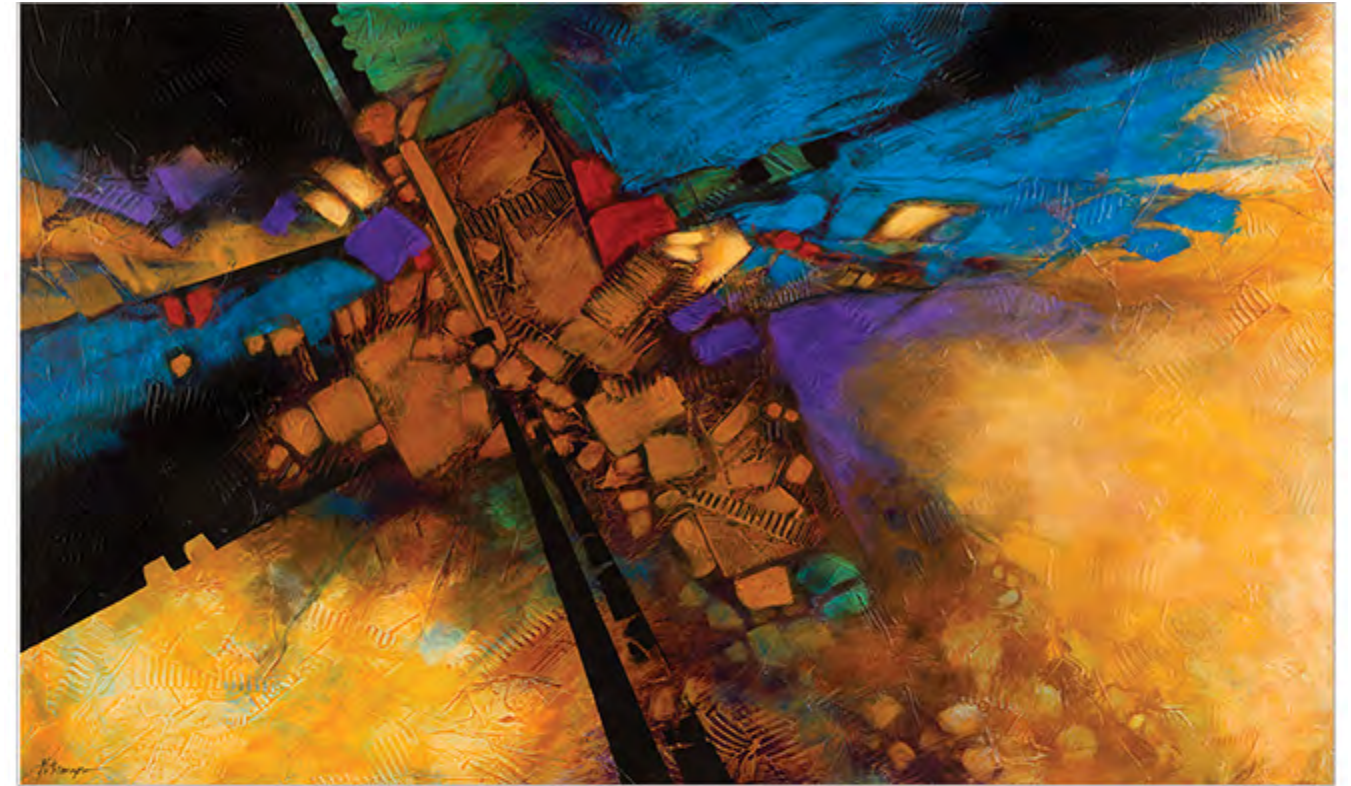


I paint mysteries, especially into the subtleties. I want people to look into the shadows and find the little, unexpected gems of texture and shape. They involve the viewer and help him see what he wants to see, so he can make up his own story.

While some works are influenced by landscapes and natural elements, most have an explosive energy that erupts for a point. Ideas are drawn together by shapes and lines that lead from complex to simple, negative to positive, from dark depths to positive energy, uplifting and happy, free and unchained.

GWEN GRANZOW
OAK CREEK, WI

<http://www.gwengranzow.com>



GARY JOHN GRESL
BROOKFIELD, WI

<http://www.gresl.com>

Life Member

After several decades creating and exhibiting, and allowing a natural evolution to occur of thought, technique and direction, my interests remain focused on objects, both man made and natural. That which springs from the rural and rustic environments still captures my imagination. The ephemeral nature of all life and material goods has tended to dominate my thought the past several years, including my current status as an artist in residence at the Lynden Sculpture Garden near Milwaukee.



There is a stillness in my work. It is the way you feel when time seems to stop - at birth, death, and if you're lucky during some awe-struck holy moment in your life. Paradoxically, it is also the way you feel when time is racing by - clouds casting complex shadows on a lake, the changing sky at dusk. I'm holding that note in my paintings. The content of my work is about the transitory nature of images, indeed of life. The light is moving, and in a breath it will be gone. I paint my meditative landscapes to catch that moment, the moment before the light goes.

ANN HABERL
MADISON, WI

<http://www.annhaberl.com>



HEIDI C. HALLETT
OCONOMOWOC, WI

<http://www.aquaartideas.com>

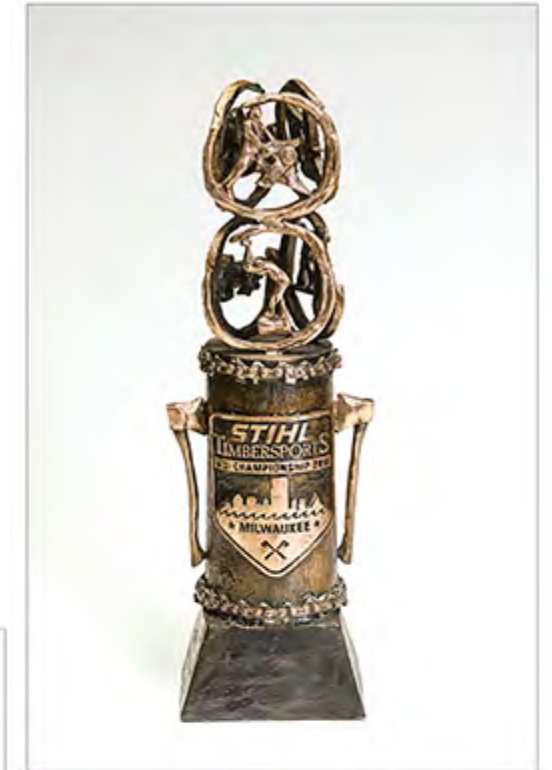
Creative expression through the arts of painting and poetry is my way to explore and collaborate. I work in oils to portray ideas and personalities, and I am always intrigued by the way history and culture influence our interactions and perceptions. I love exploring this influence through art. I enjoy working within themes and with other artists as well. To see more of my interpretations and for a list of my exhibits, please visit www.aquaartideas.com



The original Hallett Iron Works was founded in 1853 in Chicago by John Hallett, making architectural iron and telephone and telegraph construction material. After being involved in casting and fabricating jewelry for many years, I decided to revive my great-great grandfather's Hallett Iron Works for bronze and cast iron sculptures. Favorite subjects include cross country skiing, lumberjack sports and animals.

JOHN HALLETT
OCONOMOWOC, WI

<http://www.hallettironworks.com>



**LINDA P.
HANCOCK**
MADISON, WI

<http://www.lindaphancockcreative.com>

Linda P. Hancock has been a working artist for 40 years, with an emphasis on watercolor painting and drawing. She maintains a commercial lettering & calligraphy studio in Madison, Wisconsin. Her subject matter tends toward still life, with a continuing desire to explore light and shadow, negative and positive space. Her artwork has been selected for show and awards in many juried exhibitions. Examples of

Professional



Stephanie Harvey is currently living life colorfully in Kimberly, Wisconsin through printmaking, photography, embroidery, crochet and globs of other arts and crafts. Harvey has a passion for community beautification projects and promoting local arts. When she isn't teaching art classes, mentoring artists and exhibiting her own art work, she is working to connect organizations and artists to continue building the arts scene in the Fox Valley. Harvey also owns her own photography business, Boomerang Portraits, which specializes in black and white journalistic portraiture that tells your story.

**STEPHANIE
HARVEY**
KIMBERLY, WI

<http://www.toolegittoknit.com>

Professional



GARY HODEL
MILWAUKEE, WI

contact: garyhodel@hotmail.com

I am an Artist that works in many different mediums. Lately, I have plunged into acrylics. I work in Plein air and in the studio. I am represented by the River Edge gallery in Mishicot, WI and on ETSY with BarnstormArts.



Susan Young Hoffman has studied painting with Chicago Imagist Philip Hanson (the School of the Art Institute of Chicago), Jeb Prazak, and Jonathan Wilde as well as print-making with Deborah Sproule and drawing with Robert Schultz. Her work ranges from abstract art to realistic portraits. Recently she has explored photography that delivers strong elements of basic design. Her pieces are held in private and public collections nationwide. The author and illustrator of HENRY'S BIRTHDAY WEEK, Susan invites you to view her literacy blog: susanyounghoffman.wordpress.com

**SUSAN YOUNG
HOFFMAN**
MADISON, WI

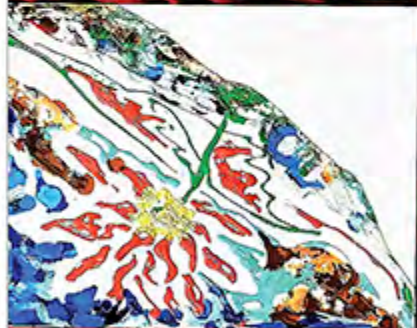
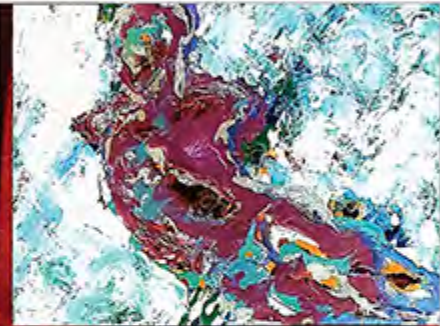
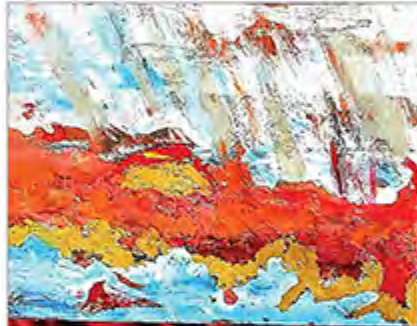
contact: carpediem_ready@gmail.com



**ALEXA
HOLLYWOOD**
MILWAUKEE, WI

contact: alexahollywood@outlook.com

I am a Multidisciplinary/Performance Artist creating iterations of self and identity through the use of Personae. All humans are multifaceted. As an old woman, I understand that a person can have many different identities over the lifespan. Personal myth and symbolism are extensively used in my work. I employ Acrylic Painting, Sculptures, Collage, Costumes, Books, Photographs, and Videos to examine self and identity. Weaving throughout my arc of work is commentary on self in context of society.



Too often we take our natural world for granted, not slowing down enough in our daily lives to appreciate nature's creations. As an artist I take the time to pay attention to the wonders that surround us and celebrate the animals that share our world. Although my watercolors are realistic, aesthetic appeal is an important component of my art. The lighting, patterns, and design movement help to direct attention to the spirit of each animal. To capture a moment in time, to ignite the spark of life, to help connect us to our natural heritage--can this be done with art?

CARY HUNKEL
MADISON, WI

contact: caryhunkel@gmail.com

Professional



**JAYNE REID
JACKSON**
MADISON, WI

I am primarily a printmaker working in intaglio and monotype. I am known internationally for my mezzotint work where I use still life imagery to study how manipulating light, reflection and shadow can tell stories and impart meaning.

My work has been consistently accepted into national and international print shows, both juried and invitational and, as a member of several print societies across the US, exhibit regularly in their member exhibitions and in international invitationals. I am Director of the International Mezzotint Society and Chair of the SC Chapter of WVA.

<http://www.jaynereidjackson.com>

Professional



Vibrant, bold colors and meticulous detail are the signature of a JJ Joyce painting. She is inspired by nature, specifically her own garden, pond and travels. JJ works in Oil and Acrylic Paint on Canvas and some painted Digital Imagery.

JJ JOYCE
MILWAUKEE, WI

<http://www.jjoyce.com>

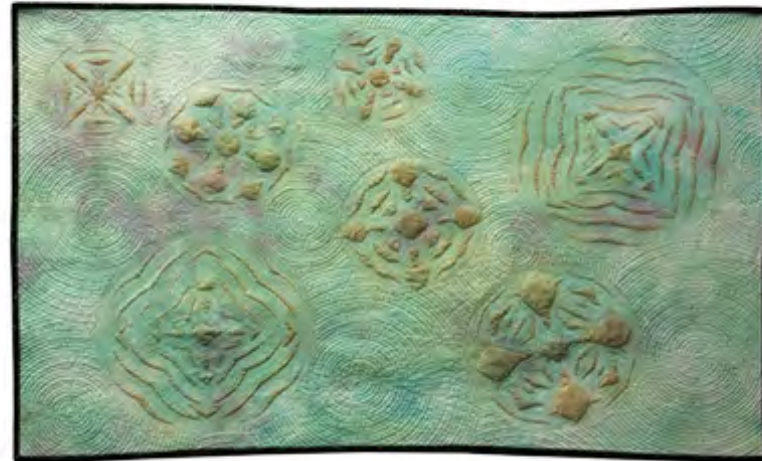
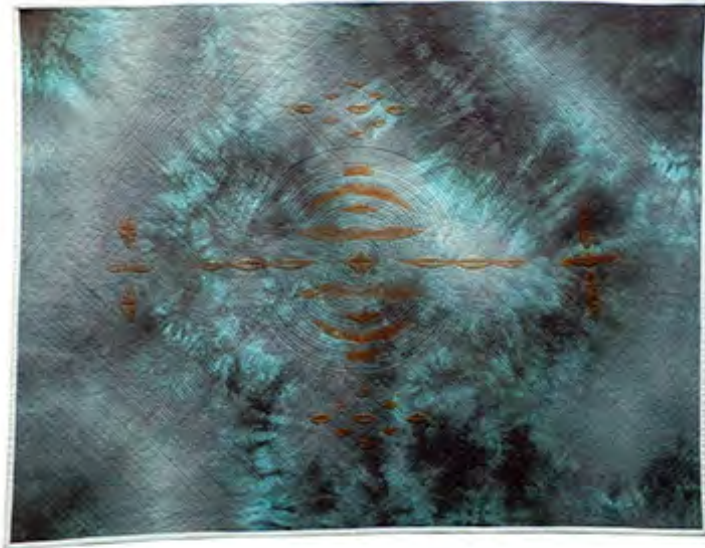


JEAN M. JUDD
CUSHING, WI

<http://www.jeanjudd.com>, jean@jeanjudd.com

Professional

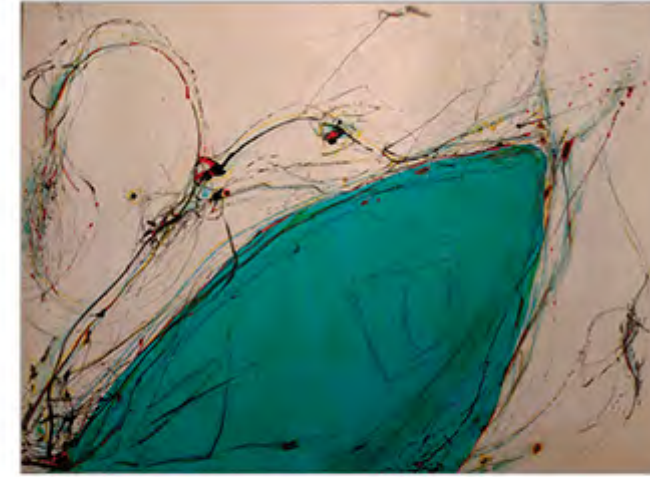
Jean M. Judd has been creating textile artworks for art collectors, interior designers, and fine art exhibitions across the United States, Canada, South America, and Europe. Her medium is "hand stitched thread on textile", which is defined by whether it is a commercial, hand dyed or painted textile, or enhanced with rust pigmentation. Twenty-nine years of experimentation with these materials has led to a distinctive narrative. The developed series show a wide range: abstract, geometric, conceptual, and minimalism. The intricate hand stitching creates shadow and light play.



My process begins with melting large quantities of clear beeswax and resin (which is extracted from trees). Adding pigments to smaller quantities of melted wax, my "paints" are kept liquid on a heated palette. I begin a painting by writing a question or message on my working surface. Fusing layers of wax to my surface, I then incorporate graphite, inks and various methods of inscribing and scrapping to create a translucent, organic quality. My hope is this body of work stimulates thought and question stemming from your own place and time.

MICHAEL KARL
MILWAUKEE, WI

Facebook @MichaelKarlEncaustic Artist



PATRICIA KELLER
MIDDLETON, WI

<http://www.patkeller.com>

Professional

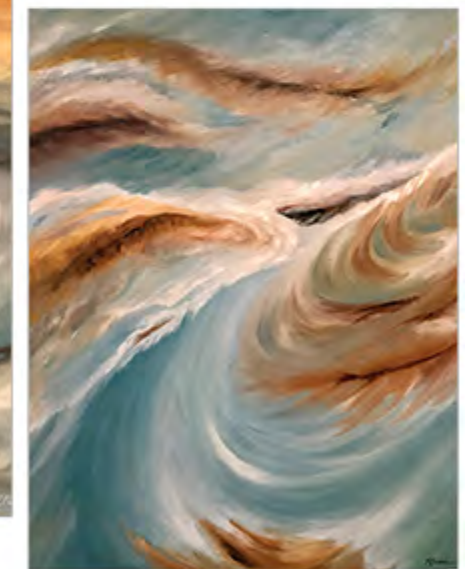
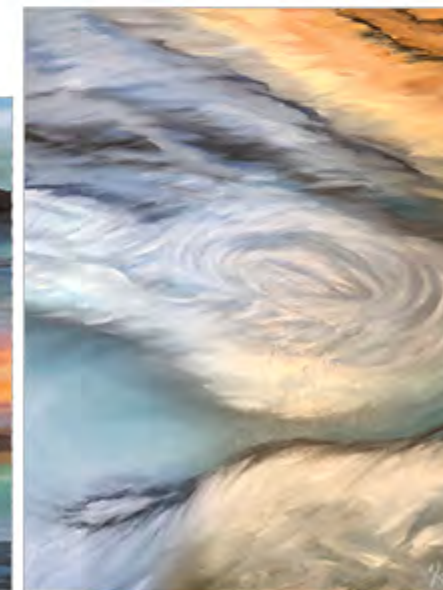
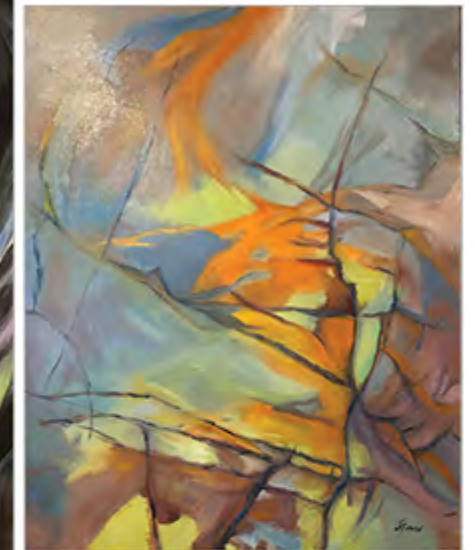
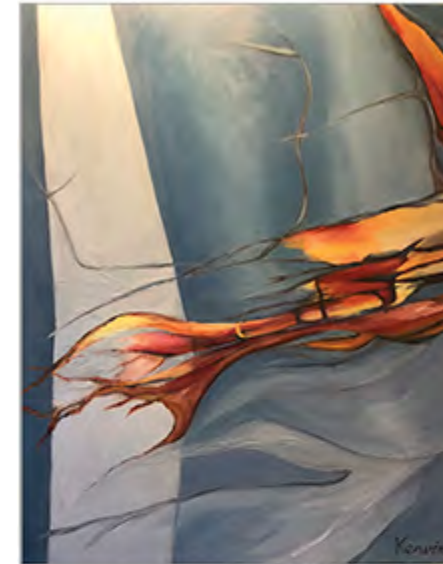
Interpreting the natural landscape is my primary interest, especially wilderness areas. I work with oils, pastels, acrylics, and water-based media, which are my preferred materials. I enjoy the challenge of utilizing unlikely color, gestural line and texture. My hope is for my artwork to be uplifting--for the viewer to simply enjoy the image without feeling compelled to interpret the artist's intention.



Geology is my passion and inspires my painting. Many patterns and forms found in geological subject matter have sparked my artistic passion. Discovering relationships between macro specimens, full-size rock formations and even in satellite views of earth excites me. Many natural stone specimens depict images also found in organic forms such as roots, branches, and veins. Stone composed by geological conditions millions of earth years ago is a source of wonder. I work in oil and also acrylic and refer to my paintings as geo-art, influenced by earth's natural history.

JUDITH KERVIN
CEDARBURG, WI

<http://www.judithkervin.com>



SUSAN KLABAK
WILD ROSE, WI

<https://susanklabakfineart.com>

Professional

As a pastel landscape painter my intention is to transport the viewer into the scene by conveying a realistic - though not necessarily literal - interpretation. When I am out in nature I view my surroundings with the eye of a painter, taking time to fully appreciate my surroundings by engaging all my senses, asking myself how the scene can be depicted in a way that will allow me to relate my experience. My inspiration is informed not only by the present moment but also by memories of the lands I have explored. Each painting brings a deeper appreciation of the created world.



Art for me is a process of organizing materials and elements to awaken senses and emotions in a way that inspires contemplation, healing and wholeness. The essential inquiry that inspires my work is to find a way through art to suggest the source of an ecological conscience. It is by showing the viewer the forms, colors, and relationships in the landscape, as well as the wildlife and flora that inhabit it, that I hope to awaken and strengthen this awareness. My paintings are evidence of what has been significant to me. They are of the places I've been and what I have felt.

TERRILL KNAACK
BEAVER DAM, WI

<http://www.terrillknaack.com>

Professional



**ANNETTE
KNAPSTEIN**
MIDDLETON, WI

<http://www.anneteknapstein.com>

My approach is simple. I photograph moments, settings and things that catch my attention, tickle my fancy, cause me to pause, or draw me closer to get a better look. Many of my images are intimate portraits of nature, street photography focused on positive aspects of life, and landscapes in the Pictorial style. My photographs have been widely exhibited and recognized on the local, regional and national level. They have appeared in a variety of publications and been added to the collections of both individuals and businesses.

Professional



Michael Knapstein is a fine-art photographer who has earned international recognition for his insightful and nuanced visual exploration of the American Midwest. His work has been widely published and exhibited in museums and galleries around the world. Knapstein's photographs have won more than 350 awards in some of the world's most prestigious photography competitions and juried exhibitions. He was recently named International Landscape Photographer of the Year at the 5th Biennial of Fine Art and Documentary Photography in Barcelona, Spain.

**MICHAEL
KNAPSTEIN**
MIDDLETON, WI

<http://www.knapsteinphotography.com>

Professional



Michael Knapstein



CAROLYN KNORR
MIDDLETON, WI

Contact: csknorr@gmail.com

Creativity is my passion. My goal is to create images utilizing honesty, mindfulness, seeing, emotive feelings from me, the artist, and elicit feelings from the viewer. I love utilizing light and shadow to help create a mood that resonates with the viewer. My process is to create original one of a kind pieces utilizing gold and silver leaf, as well as creating limited edition prints on archival photographic papers.



I work exclusively in transparent watercolor on paper. My landscapes are formed by a slow layering of some 30-50 washes of brush applied pigment, which builds into a rich and luminous surface. Just enough detail is utilized to establish a sense of place. I received my Master of Fine Arts in Painting from the University of Wisconsin-Madison. My paintings are represented in Wisconsin by Edgewood Orchard Galleries in Door County, Integrated Art Group in Madison and River Arts on Water Gallery in Prairie du Sac.

LINDA KOENIG
BLACK EARTH, WI

contact: LKPaint@tds.com

Professional



MEL KOLSTAD
FOND DU LAC, WI

<http://www.melkolstad.com>

Professional

Two thousand eighteen was the year I finally decided to go with my gut and follow my heart - and work tiny. It's where I've always wanted my focus to be and I'm so glad I followed this path! I recently completed a 200-print project where I created a drypoint print a day for 200 days - and each print only measures 1.5"x2"! It was a challenge but I am happy to say I did it.

I may be working a little larger now - I'm doing some 4x6" and 6x6" pieces - but that's about as large as I care to work for now. I still can't believe I get to do this for a living!



MFA, MA, BS from The University of Wisconsin.
Exhibiting watercolor artist since 1976
Currently College Transfer Art Instructor at Madison College-MATC
Total of 43 years of teaching including public school.

**MICHAEL
KRATOCHWILL**
MIDDLETON, WI!

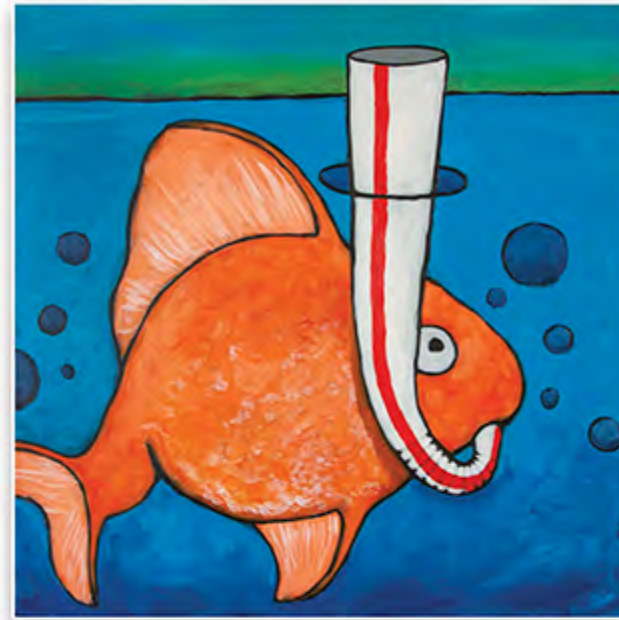
Contact: mwkrat@gmail.com



GILES LA ROCK
APPLETON, WI

From a mouse and gopher to a fish and a cat, i have often used animals as the subject of my work. My style is whimsical and often strange. My inspiration lies in the moments that go without notice and the details that others do not see.

contact: lhoq32@yahoo.com

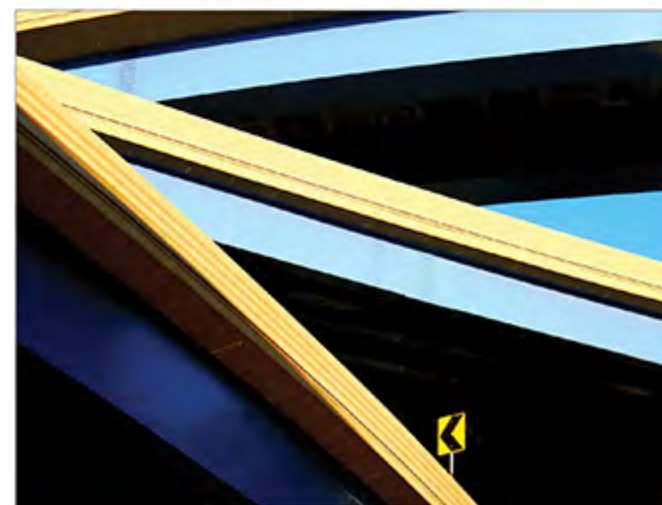


I am an award winning fine art photographer exhibiting in juried shows nationwide. My photography can be architectural abstraction, documentary, new topographic or experimental using minimal aspects and unusual viewpoints. I try to make the viewer interested in the work by using bold lines, shapes and color to draw them in for a closer look at the details. My list of awards and exhibitions may be found on my website page. I am looking for gallery representation, one man exhibition opportunities and commissions.

GUNTIS LAUZUMS
BELGIUM, WI

<http://www.guntislauzums.zenfolio.com>

Professional



**CLAUDETTE
LEE-ROSELAND**
CEDARBURG, WI

I am a painter of abstract works in acrylic and oil/cold wax that range in size from 5x5' to 6x6". I accept commissions, working with the client to select size, color and composition. My works are generally very colorful and playful. As I paint on board, I am also able to customize the shape.

As a painter, I am always amazed at the final image. I like the concept of making something that has never existed until now- something totally unique- a one of a kind.

<https://www.claudetteleeroseland.com>

Professional

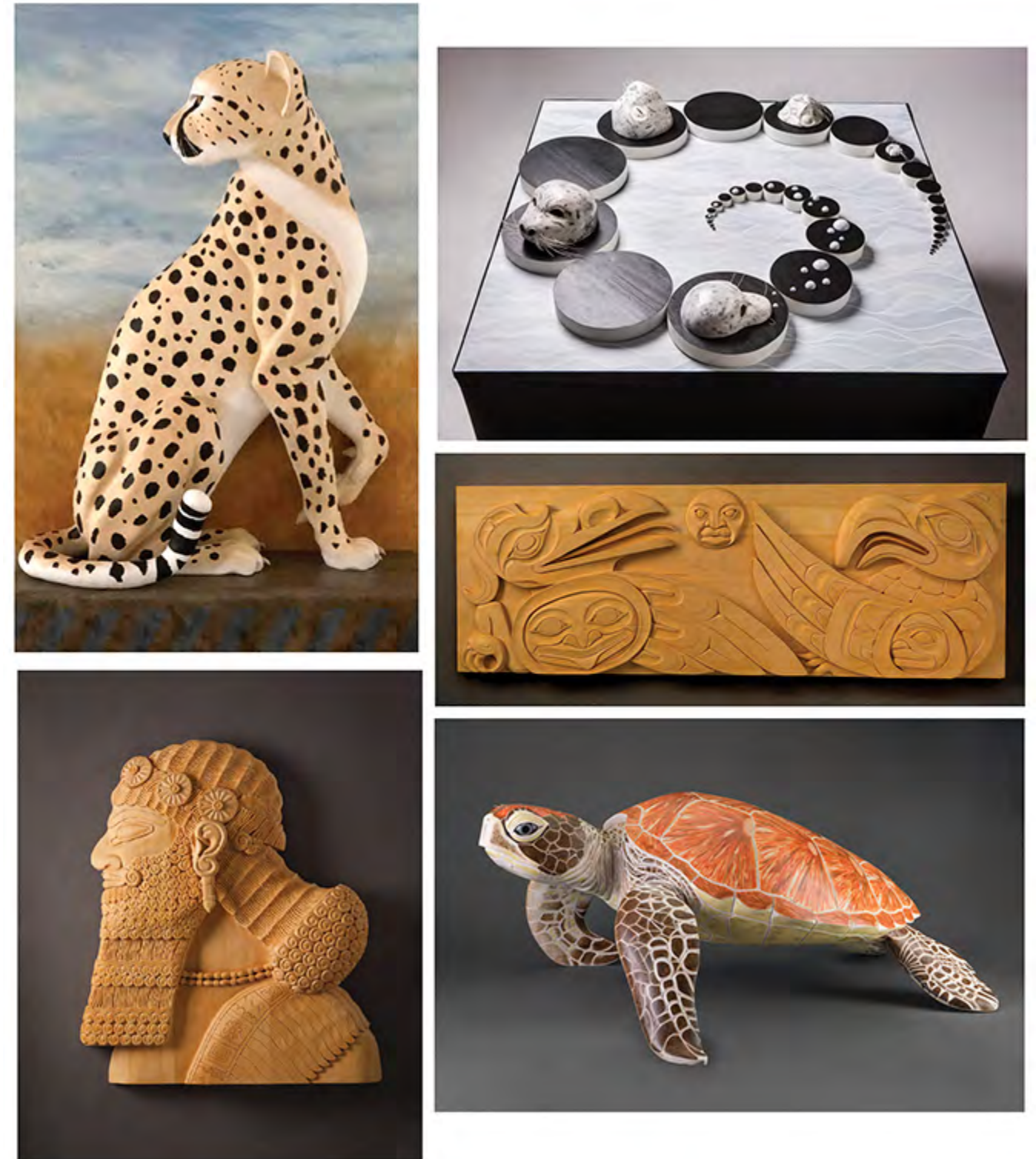


JIM LIEDTKE
MADISON, WI

I have been sculpting in wood for 20 years. My preferred media include basswood, butternut, and the woods of the Pacific Northwest. My compositions are realistic in style and large in scale. My inventory of available pieces can be viewed on Facebook and Pinterest. Commissions are accepted.

<https://www.facebook.com/JimLiedtke>

Professional



MICHELLE LOUIS
MIDDLETON, WI

<http://www.michelleLouis.com>

Professional

Best known for her large, abstract paintings, artist and naturalist Michelle Louis documents her experience in nature via non-objective painting. Her work is held in private, corporate, and public collections in the U.S. and abroad.

I love facing a huge, blank canvas. The problem-solving that occurs reflects cryptic aspects of nature based on cyclical patterns and movement. My work arises symbiotically, holistically, in repetition. I don't tell the viewer how to think about it. It is simply a map of points in time that leads to the "presence" of a finished piece.



I maintain a daily practice of drawing and tapestry weaving in my studio in Madison and teach students in conference, workshop, and private settings. My work is focused on observations of the world I live in and personal ideas I develop into stories. These may become handwoven tapestries or entries in a sketchbook with watercolor and ink.

RUTH MANNING
MADISON, WI

<http://www.ruthmanningtapestry.com>



SUSAN MARTIN
WAUPACA, WI

<http://www.susanmartinfoolkart.com>

Professional

I have an unending curiosity about human behavior, relationships, and a love for pets and trees, which I often incorporate into my work. I enjoy working narratives in my paintings and folk art carvings that are often whimsical and tongue-in-cheek. I love the creative process because it connects me with others. My work can be purchased at The Blue Dolphin Gallery in Door County; The Hang Up Gallery in Neenah; The Revival in Neenah and Waupaca; Little Fat Gretchen's, Simpson's, and The Green Fountain Inn in Waupaca, and The Silver Coach Restaurant in Stevens Point, WI.



Since 1998 I have lived on a farm in the Driftless Area of SW Wisconsin raising dogs, cats, chickens, peafowl, turkeys, and pigs as models, and for meat or companionship. Educating about breed/species identification; the relationship we have with animals we raise for meat or as pets; and the humor inherent in this lifestyle are the reasons I make woodcuts, linocuts and oils for a broad audience.

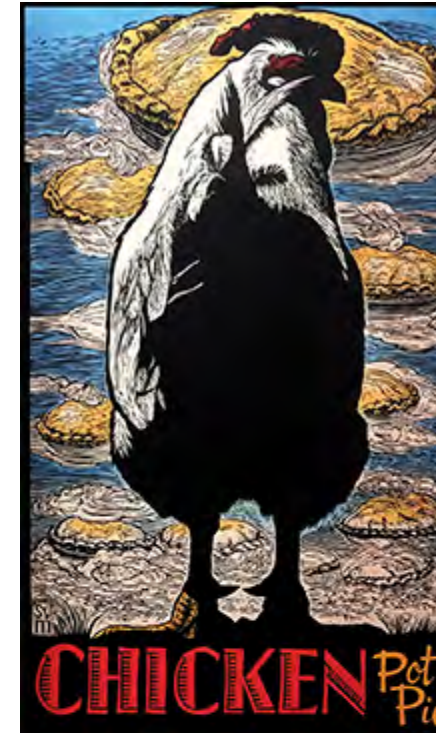
Public collections include Leigh Yawkey Woodson Art Museum, Museum of Wisconsin Art, Epic, Denver Art Museum, UW Children's Hospital, etc.

Representation: Abel Contemporary since 2005

S.V. MEDARIS
MOUNT HOREB, WI

<http://www.marketweightpress.com>

Professional

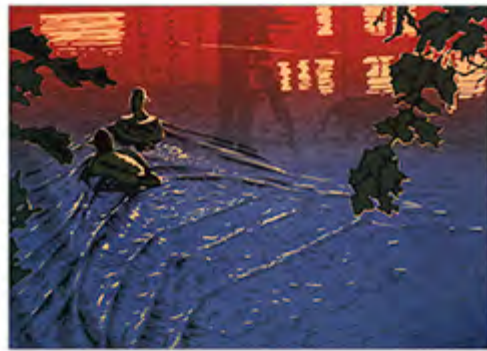


JOHN S. MILLER
MADISON, WI

<http://www.grayjaygraphics.com>

Professional

Oscar Wilde said: "The true mystery of the world is the visible, not the invisible". This idea has guided me long before I ever read this quote. My inclination has been to look at things as though they remain unknown, may remain unknowable, but can be known with greater depth than is currently the case. I try to look at the world with fresh eyes, the way I looked at the world as a child. Now I bring an educated adult mind to this process as well as a richer level of self awareness. I believe that through making art I can better understand the world and my place in it.



Bill lives and paints in the heart of Wisconsin's Kettle Moraine. He has been painting since he was a young boy getting early training from his mother, who was an artist, and later from several schools and artists in Wisconsin and Minnesota. Bill earned degrees in Mathematics and Biology from the University of Wisconsin-Stevens Point. His undergraduate and graduate degrees in Biology exposed Bill to the writings of Aldo Leopold. Leopold's "Land Ethic" has been a major influence in his artwork.

WILLIAM MILLONIG
CAMPBELLSPORT, WI

<http://millonigart.com>

Professional



LEE MOTHES
KAUKAUNA, WI

I love to create art that plays with the patterns, light and power of ocean surf. I am also fascinated by how the ocean currents and surf shape shorelines. Skies are equally enchanting. I work in a 'what if' world using my imagination and memory, plus photo-references to capture as much as I can of the ocean's energy.

<http://www.oceansanddreams.com> My artwork helps keep me in touch with those places I would really like to be, that feed my soul.

Life Member



Ruth Ewart Muehlmeier was active in the Milwaukee art community and taught Art History for 18 years (1960s and 1970s) at Layton School of Art (now MIAD) and Marquette University. Ruth was president of Wisconsin Painter's & Sculptors (now WVA) for many years and was the organizations archivist until the late 80s. Ruth was awarded lifetime membership in WVA for her service to the organization in the 60's, 70's, 80's & 90's. At 93 years old, she no longer creates new work but her daughter, Christine Style assists Ruth in sharing her work. Contact her at stylec.prints@gmail.com

RUTH MUEHLMEIER
BROOKFIELD, WI

<http://www.christinestyle.com/Ruth-E-Muehlmeier.html>

Life Member



PAUL MURPHY
OCONTO, WI

contact: paulmurphywoodb@gmail.com

Professional

Artist: Paul Murphy Pyrography (wood burning). I am a self taught Pyrographic Artist, designing, burning & Painting, using various types of Pyrographic techniques. Specializing & teaching students the Art of High Realism in wildlife with large & miniature burns. These one of a kind pieces of wood, in most circumstances would be left on the ground during logging. It takes many hours to create these, from the time of gathering; selection; drying; burning & oil painting, along with years of experience to create each piece of art. I try to give wood new life by creating Pyrographic Art.



I love color. Using a limited palette, I mix almost all my colors and seldom use paint straight from the tube. That way, I create "my color" and not a manufactured one that is mixed to the point of not being able to see the small intricacies of the individual pigments. My style had evolved through observation and changes in my environment, but I have learned not to take myself too seriously as a result. I paint what I feel as I know each piece that is created ends up qualifying the one before and becomes a recognizable style.

JANET NELSON
CAMBRIDGE, WI

<http://www.janetnelson.net>

Professional

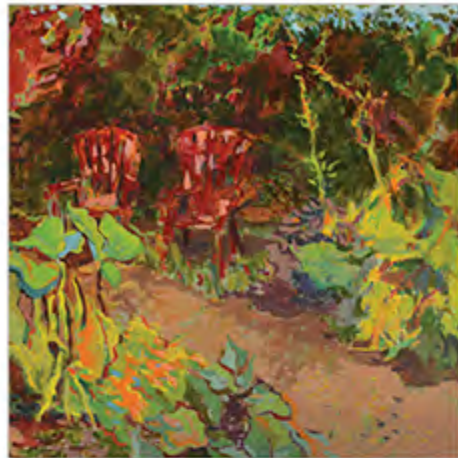


VERA NIKIFOROV
MADISON, WI

<http://www.veranikiforov.com>

Professional

The colors I mix contribute to a three dimensionality in my work but more importantly I think of color as an expressive mode, a vital component of a complete and harmonious work of art. A background color of red may be a sign of joy or warmth. Violets and yellows, reds and greens, vibrant complementary colors, bring an excitement to the work. The brushstrokes, the line elements, make a painting dance. There is a great deal of putting paint on the canvas, then wiping out, then painting again. The layers reveal love of the materials. So goes the adjusting, the dance of making art.



Today with digital photography, you need to be much more than just a photographer. To me it is being an Artist of Photography. This includes an education in photography, the ability to create your own work, from concept to the finished print and/or the creation of a new process. I firmly believe that to be an artist in photography you need to be able to complete as much your work as you can, within your own studio. The images I photograph; I make unique in their own way. I hope the people who attend my shows appreciate what I do and how I show myself through my work.

DENNIS NINMER
NEW HOLSTEIN, WI

<https://www.denniswninmer.photography>

Professional



MAXINE NOBBE
OSHKOSH, WI

Any talent one possesses is a gift to be treasured, nourished and shared. This is the journey I am currently on. Any growth involves a measure of risk, but that risk is worth taking. My hope is to engage people along the way.

contact: maxn.0109@yahoo.com



I always liked doing things my own way, not always to universal applause. Now, as a silversmith, I found my happy place, where I live in creativity.

I like lines over circles. I like floating over layers. I like subtle over complex. I like making one new piece over duplicating the design. I feel blessed to have found this passion and grateful that some folks like what I do.

JOAN NORTH
STEVENS POINT, WI

<http://JoanNorthDesigns.com>



KAAREN ORECK
MADISON, WI

<http://www.kaarenoreck.com>

Professional

Using subjects from around the corner or the other side of the world, I feel that watercolors can portray the colors of the world in their brightest lights and darkest shadows with equal excitement. My paintings have won numerous awards and have been juried into many exhibitions. I have achieved signature membership in the National Watercolor Society, Transparent Watercolor Society Of America, Northwest Watercolor Society, Louisiana Watercolor Society, and Wisconsin Watercolor Society. Other memberships include: professional status in Wisconsin Visual Artists.



Deke is an award-winning oil painter whose work has been juried into numerous national shows including AIS, NOAPS, AWA and OPA. While focusing on plein air painting, she also enjoys painting the figure and portrait from life. Her paintings can be found in museums and private collections both nationally and internationally. She is represented by galleries in WI, MO, IN, MN and IA and gives workshops throughout the US.

**DK (DEKE)
PALECEK**
KAUKAUNA, WI

<http://dkpalecek.com>



GAY PAUTZ
NEW BERLIN, WI

<http://Gay-Pautz.pixels.com>

I enjoy painting a variety of subjects. I work primarily in oils and acrylics. My goal is to convey the subject matter with a flair that is pleasing to the eyes, built on the uniqueness of the subject and my own personal style. Commissions are accepted.

Professional

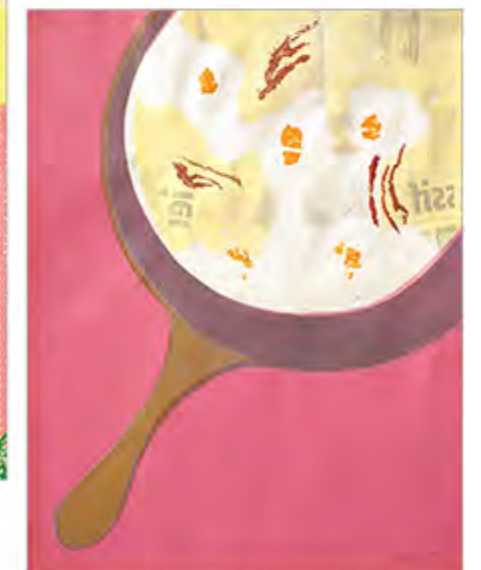
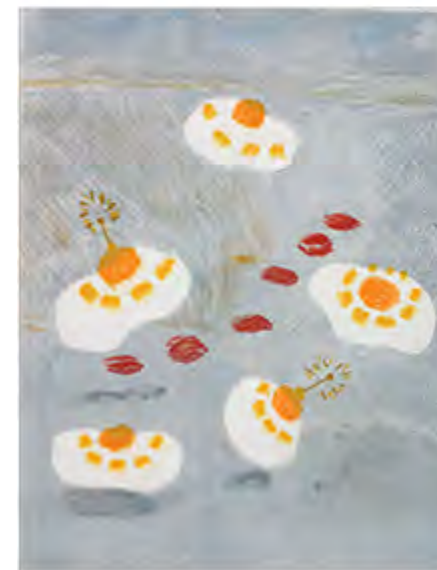
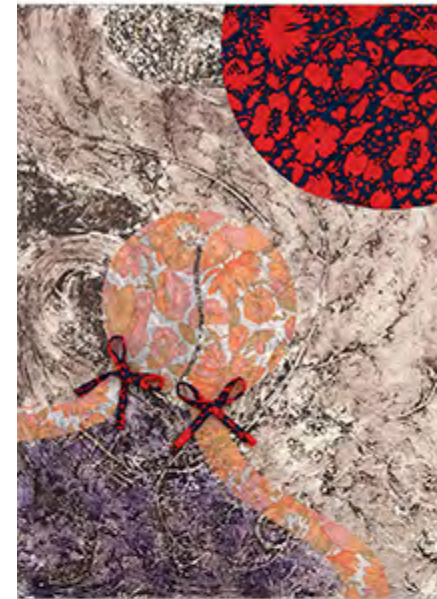


By applying ink to plexiglass and pressing paper to the image, my monoprints are born. Just as children come with their own briefcase of ideas, my mixed media art is full of negotiation. I attempt not to accumulate, but rarely throw feelings, traditions or resources away. I make prints of nostalgia with ink, pastel, colored pencil and the occasional three-dimensional material added as narrative.

Blending the allusion of language with the illusion of art is fertile ground for my figurative/abstract art.

MERIKAY PAYNE
MADISON, WI

<http://www.artsallusions.com>



DAVID PEACOCK
RHINELANDER, WI

Most of my work is focused on landscape painting, either depictions of the natural world or scenes from around the town near where I live in Northern Wisconsin. My plein air paintings may be finished works if I like the result or perhaps just used as studies for paintings done in the studio. I am a great believer in the value of painting directly from life and think this has done more than any other single thing to help me develop as an artist.

<http://www.davidpeacockart.com>

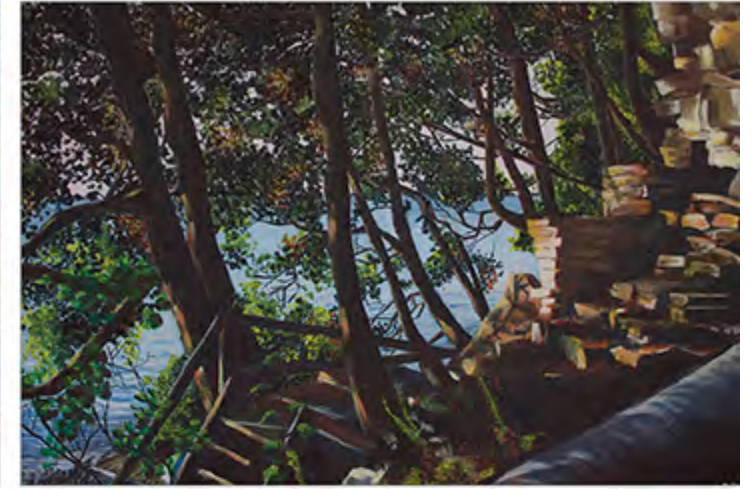
Professional



My love for storytelling, adventure & nature come through as I explore quiet, nostalgic moments in my work. By experimenting with light & contrast, I create evocative, spectacular settings that often lend themselves to a narrative or an illustrative tone. The settings I create are usually based in nature or have a dominating natural influence. I work primarily in oils, but also do a significant amount work in charcoal & pastel. Commissions are accepted. I'm currently represented by galleries in Door County & Milwaukee with my original oil paintings as well as prints and cards.

SOPHIE PERRY
MILWAUKEE, WI

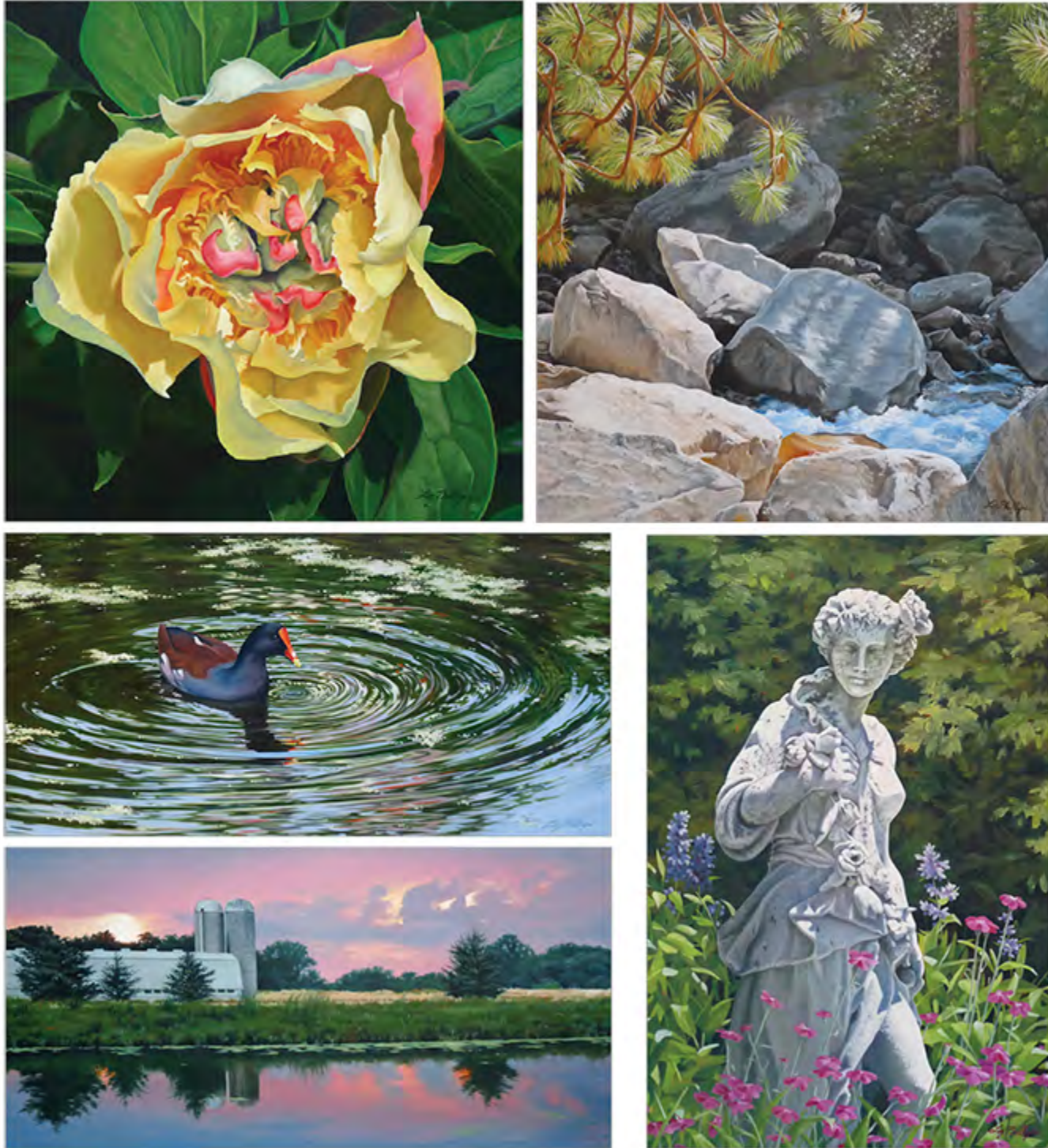
<http://www.sophieperry.com>



LIZ PHILLIPS
WAUWATOSA, WI

<http://www.lizphillipsfineart.com>

Our natural world has always been my main source of inspiration. But any scene with color that sings or beautiful lighting, or that is just a moment worth trying to capture is fair game. I'm an unabashed studio painter (so far) working in oils from my own photos, drawings and memory. I love the slow-drying paint and the ability to blend colors right on the canvas. All of my work can be found on my website, along with up-to-date information on current exhibitions and events. I welcome any and all queries or interest.



I am a painter/mixed media/pastel artist living and working in western Wisconsin. My current style is nonobjective abstraction. Working within a completely intuitive framework, the subject matter evolves as the work progresses. The viewer of my artwork is observing a mysterious conversation between a piece and myself. The 'imagery' is a map of that creative process expressed through the juxtaposition of line, texture, pattern and color. I am continually striving to create a visual language that is unique to me and full of more questions than answers.

DENISE PRESNELL
EAU CLAIRE, WI

<https://www.denisepresnell.com>

Professional

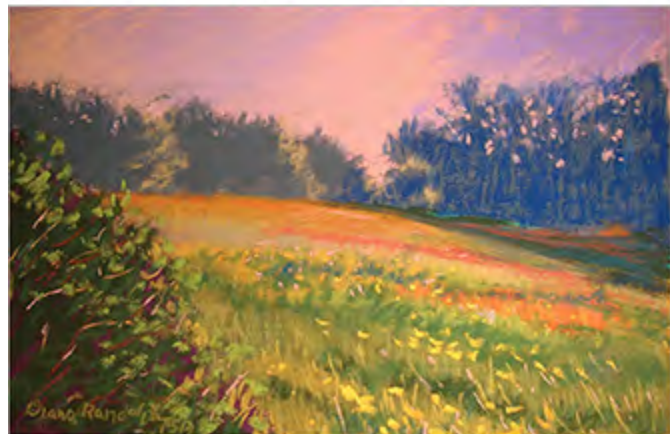


DIANA RANDOLPH
DRUMMOND, WI

<http://www.dianarandolph.com>

Professional

My paintings celebrate the natural world. My goal is to simplify values and shapes, to capture patterns and rhythm, and to exaggerate color and texture to emphasize the heart of the painting. Though pastels are my primary medium, I also work in oils. My artwork is included in my poetry book, *Beacons of the Earth and Sky* (Savage Press). I'm a signature member of the Pastel Society of America. In Wisconsin my paintings are displayed in Bayfield, Cable, Boulder Junction, and Butternut. My *Once in a Blue Moon Studio* is open by appointment and during an art crawl in August.



I'm miles away when I paint, but as Twyla Tharp says, "Art is the only way to run away without leaving home". It's easy to lose track of time while painting. Bold colors, mesmerizing brush strokes and rhythmic patterns define my work. I enjoy painting quiet soundless forests, people in candid situations and urban everyday landscapes. Each provides an opportunity to explore and see more closely what some might miss. I work primarily in acrylics and oils. Commissions accepted. I show throughout the state and have collectors nationwide.

ANNE RASKOPF
OCONOMOWOC, WI

<http://www.anneraskopf.com/>



LYNETTE REDNER
DELEVAN, WI

<http://www.rednerart.com>

I am drawn to the shapes and how the light plays on the land, streams and buildings. I see barns as an endangered species; they hold incredible history, strength, and speak to the perseverance of the people who built them. My goal as a painter, is to capture that moment in time, through my vision, choices of colors and brushstrokes. Painting animals, it's about capturing their emotion and translating that into a story for the viewer. I do pet/animals and family homestead commissions. You can see my work at Raven's Wish Gallery, Janesville, Wisconsin. You can contact me through my website at rednerart.com.



My paintings are influenced by science fiction, gender roles, comics and my own weird ideas. The last couple years, humans have been bumming me out. I have started to do paintings that yearn for a new kind of human. One that is enhanced by science and earth changes. I like to think that these new life forms will still like being sexy and wearing strange hats but won't be so hard on the planet or each other. They might even still listen to our music. There might be a few of us old world humans around and they'll let us stay if we behave ourselves. Instagram: @spacethrob

AMY REGUTTI
MADISON, WI

contact: amyregutti@gmail.com



**MICHELLE
RICHESON**
NEENAH, WI

<http://www.mricheson.com>

Professional

Exploring is what pulls me forward. Each day - whether in my studio or wandering the world - my joy is uncovering something new. I want to see something unexpected, dig more deeply into it and then discover a fresh way of conveying what I observe to other people. When I am able to do this - when I can show how light dances and fractures and changes things, then I am transported, away from the mundane and the painful, and into the transcendent and beautiful.

If through my painting, I am able to communicate even a bit of what I experience in this process, I am happy.



I am intrigued by people from the past--the 40's and 50's in particular, and use vintage wallpaper, fabric, and found objects on canvas to conjure the feel of those eras. Old vernacular photos painted over these backgrounds create a narrative that is for me much like writing a visual short story. I also love painting portraits, and use models often dressed in costumes from my collection. At times I will paint these various portraits over vintage materials to hint at their fictional stories. Another love of mine is painting still lifes, choosing from the quirky antiques I collect.

JANET ROBERTS
BROOKFIELD, WI

<http://www.janetroberts.com>

Professional



**JOSEF-PETER
ROEMER**
GALESVILLE, WI

<https://jproemer.art>

I don't have any great philosophical statement to make about why I create my art. I paint what I like and make a comment on that in my interpretation of the subject matter, I prefer to paint themes that evolve from my dreams, personal experiences, historical and current events. I do not concern myself with perspective or size as it relates to other objects in the painting, nor do I have a single point of interest. It is the whole painting that is the point of interest.

Professional



My watercolor paintings show my involvement in & fascination for textures, both visual as well as tactile. Lately I have been attaching my watercolor paper to clayboard, then adding charcoal or rice paper to enhance the textural effect. Finished paintings are covered with several coats of polymer varnish, making them waterproof, with no need for glass or even a frame. The landscapes and flowers of Wisconsin are my inspiration and the subject matter of most of my work, which is sometimes representational, and other times impressionistic.

**CAROLYN
ROSENBERGER**
IOLA, WI

<https://fineartamerica.com/artists/carolyn+rosenberger>

Professional



**KATHERINE
STEICHEN ROSING**
MADISON, WI

<http://www.studioksr.com>

Professional

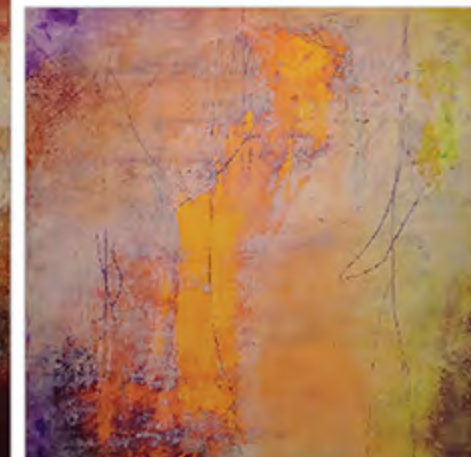
Rosing's paintings celebrate forests and water in urban and wild areas. Forests reveal cycles of time and nature which emerge in her abstract paintings and drawings coded as rhythmic patterns of line, negative space, color, and texture. Katherine works in a wide range of sizes and welcomes commissions. A Wisconsin native, Katherine earned an MFA from Northern Illinois University and was recently awarded individual artist grants from Dane Arts and the Madison Arts Commission. Rosing's work is exhibited internationally and is included in numerous private and corporate collections.



Reflection of who I am as an artist keeps bringing me back to one word, evolution. I have always loved art - I drew and painted as a child, and as I got older, the transition into adulthood left me little time for creative expression. In my 30s, another major transition, into parenthood, gave me the unexpected inspiration to return to art. Spending time with my sons and seeing the world through their eyes, moved me to pick up the paint brush again and express color with renewed wonder for the world around me.

RICK ROSS
MOUNT HOREB, WI

<http://www.summitartstudio.com>



JEAN SANDROCK

MIDDLETON, WI

Facebook: <https://www.facebook.com/jean.sandrock>

Art has been my passion throughout my life as an illustrator, calligrapher and mixed media collage artist. The direction of my current work takes inspiration from marbled, textured and decorative papers gathered from around the world. As I paint with paper my works evoke a tactile quality much like fabric. I am constantly challenging the limits of paper as I depict flowers, landscapes and abstract themes. I continue to search for new ways to create three-dimensional effects that speak to those who view my art and appreciate this unique media. Commissions are accepted.

Professional



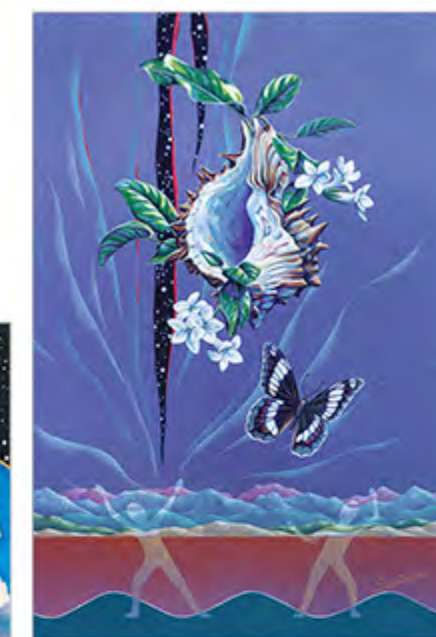
My work is based on my love of nature in all its forms and the effect our biological heritage has upon our search for meaning in life. The combination of natural elements and geometric forms suggests the fragile balance of nature and reason. Influences include the aboriginal symbolism, impressionism, cubism, and ancient and modern mythologies that instruct and illuminate the human condition. I take special interest in the philosophy of Kandinsky regarding the spirituality as well as the psychological implications of color.

TIMOTHY SANTOIRRE

MOUNT HOREB, WI

<http://www.san2r.com>

Professional

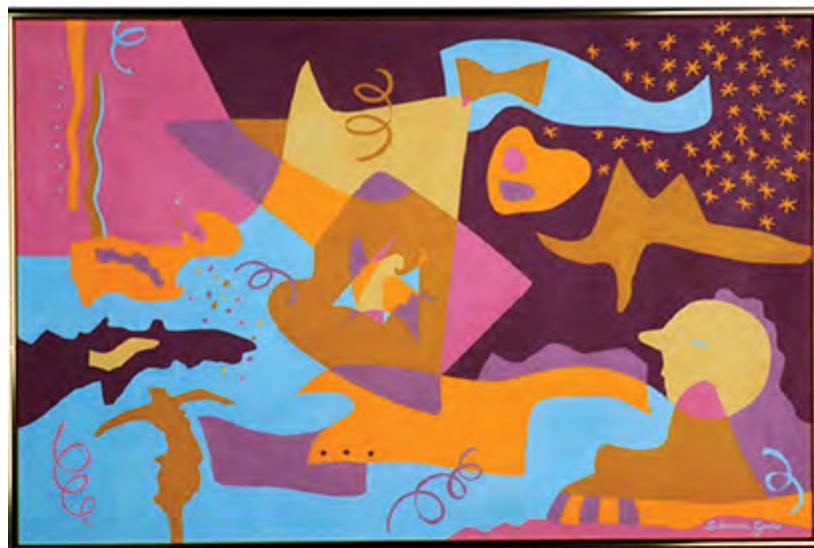


**ROBERTA
SCHERRER**
GREEN BAY, WI

contact: abcart2004@aol.com

Life Member

When I paint, I am mainly interested in form and color. My design ideas come from my imagination, although everything in my past and what is happening now influences them. There are elements of abstraction, surrealism, modernism, fantasy and humor in my work. Oil painting has become my personal area of pure imaginative expression which allows me the most freedom of thought. I have been painting in this intriguing manner for over thirty years, exhibiting throughout Wisconsin and other states. Usually my stage is a gallery, museum or a campus.



Words cannot describe my art. My emotions tell a passionate story through musical song titles, vivid color and my imagination via the world of abstracts.

My art is unique because I am the currently the only fine artist in the country creating with vibrantly colored stains on wood. Most always, I use my hands. My intention is to create dimension, movement and emotionally charged works of art that have touched every sense. I also paint with alcohol ink and watercolors on various substrates. I am currently represented by galleries in West Bend and Stoughton, WI.

SUSI SCHUELE
LISBON, WI

<http://www.secondtouchart.com>



**SOPHIE PERRY
SCHWARTZ**
MILWAUKEE, WI

<http://www.sophieperry.com>

My love for storytelling, adventure & nature come through as I explore quiet, nostalgic moments in my work. By experimenting with light & contrast, I create evocative, spectacular settings that often lend themselves to a narrative or an illustrative tone. The settings I create are usually based in nature or have a dominating natural influence. I work primarily in oils, but also do a significant amount work in charcoal & pastel. Commissions are accepted. I'm currently represented by galleries in Door County & Milwaukee with my original oil paintings as well as prints and cards.



David A. Sear is an award winning 2-D artist whose work is represented in private, corporate and museum collections. A 2-D artist, Sear draws and paints using harmonic proportions that relate to nature as the basis of his compositions. He is inspired by his favorite watersheds: the Mississippi, Turkey, Rock, and Manitowoc River basins; readings on mathematic proportions; and trips on the continental U.S. and abroad. He is represented by Fine Line Designs Gallery located in Door County.

DAVID SEAR
WAUWATOSA, WI

<http://www.davidsearart.com>

Professional

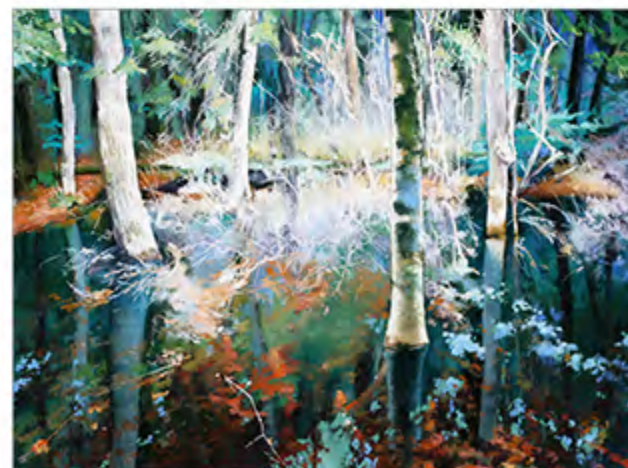
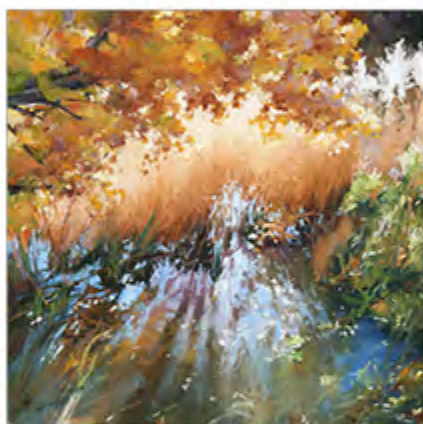
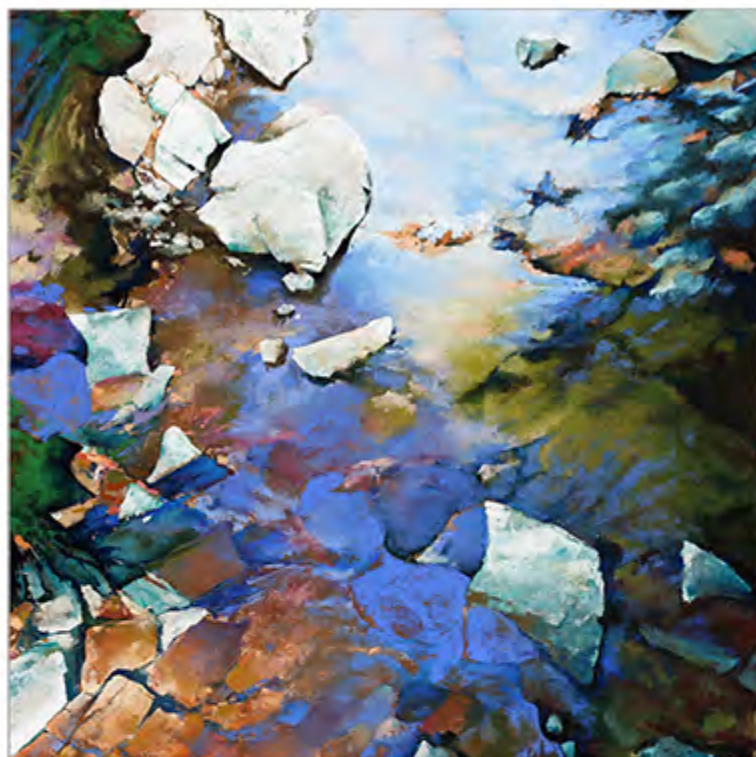


**COLETTE ODYA
SMITH**
WAUWATOSA, WI

<http://www.coletteodyasmith.com>

Professional

I am a painter of contemporary landscapes that often blur the distinctions between abstraction and realism. Known for working in pastels for over 25 years, my imagery often uses a close focus on water, rocks and foliage that explores layers of reality and meaning while remaining grounded and accessible. I use my love of color and texture to invite the viewer to share in new perceptions and appreciation of the mysterious beauty revealed in the humblest of scenes. I have exhibited widely and been recognized with honors nationally and internationally.



Jean D. Sobon is a professional artist working predominantly in 2-D Mixed Media, most often with a combination of collage, drawing and acrylic paint and mediums. Sobon's work contains symbolic imagery derived from the natural world, human nature, myths and dreams, usually set in altered contexts.

JEAN D. SOBON
MILWAUKEE, WI

contact: jdsobon@wi.rr.com

Professional



TERRY STANLEY
GREEN BAY, WI

<http://www.terrystanley.com>

Trained in the classical manner to paint portraiture and still life, I have found my happy place creating portraits of human, canine and equine personalities. I'm honored to have clients around the globe, thanks to the internet. Making art is a joyful thing for me and I try and convey that in my paintings and when I teach.

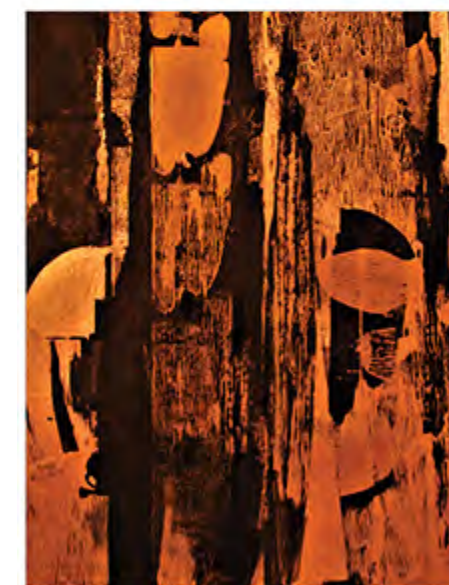
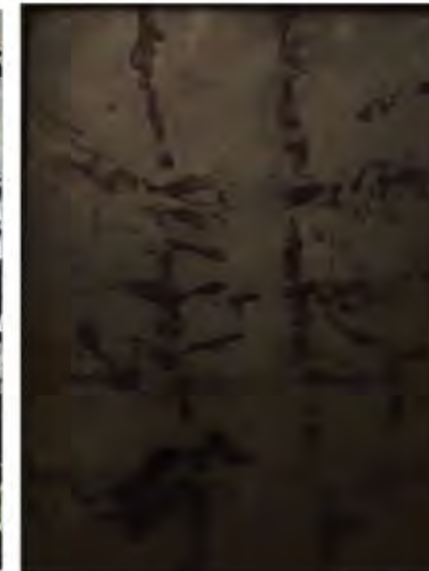
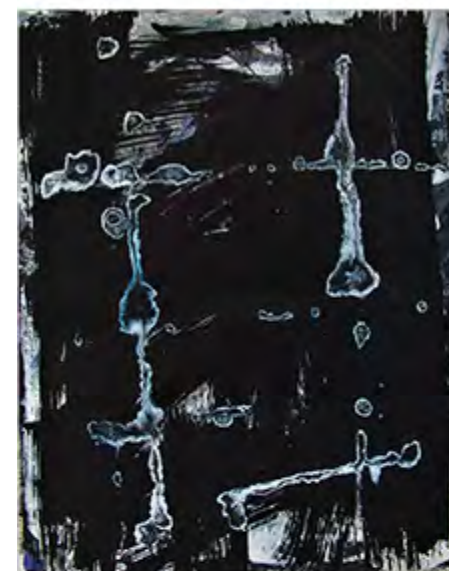
WVA Executive Director



One of my continuing themes is the concept of looking through multiple layers or surfaces. Surfaces have always intrigued me; some are dense, some are transparent, some have a contained energy. I try to combine a very active, spontaneous surface with more subtle areas using a very limited palette and sometimes structure it to contain what can appear to be a random application of media. Ideally the results are paintings that are mysterious and evocative. I hold the BA Degree in Art from St. Norbert College and the MFA Degree in Painting from Michigan State University.

MARILYN STASIAK
DEPERE, WI

contact: stasmf47@att.net



JEFF STERN
MADSON, WI

<http://www.jeffsternartist.com>

A graduate of the UW Madison with a BS in Art Education and 40 years as an illustrator/commercial artist. For the past 15 years as a serious fine artist the work has been directed at portraying the urban and rural beauty of (mainly) Southern Wisconsin with oil, pen and pencil. The art has been shown in many exhibits, some awards have been won and many pieces sold, but the aim has always been to keep improving and leave a solid legacy as an artist.

Professional



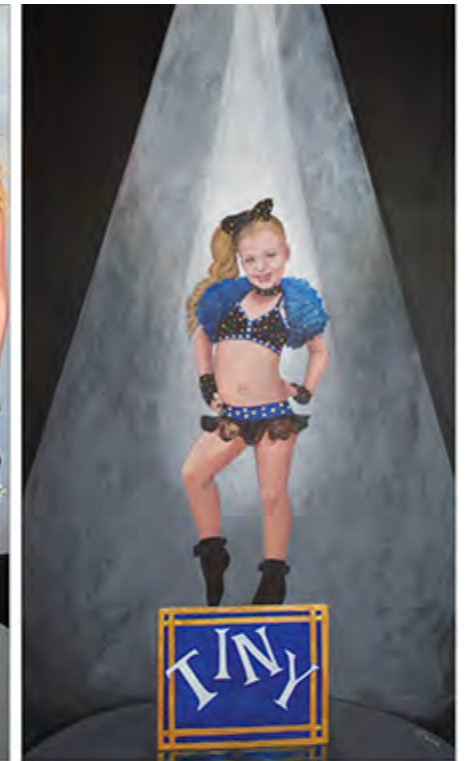
Karen Stewart is a figurative artist working in ink, pastels, watercolor and acrylic paint. She made the difficult decision in 2016 to stop teaching studio art and art history in a public high school to pursue her own art full time.

Story has always been very important to Karen's motivation and creative process. Her "female gaze" delights in her models' clothing, jewelry, props and the settings that they are placed in. They are clues to the stories of her models' lives, or perhaps clues to the story of Karen's life. Karen is currently a co-chair of the Northeast Chapter.

KAREN STEWART
DEPERE, WI

<https://www.karenorensonstewart.com/>

Professional



BETH STODDARD
MILWAUKEE, WI

<http://www.bethstoddard.com>

Professional

Beth Stoddard is a Milwaukee artist who draws and paints from life with a modern sensibility. She's currently working on a project to paint all 169 of the Milwaukee County Parks. Wisconsin born, she studied in Philadelphia, obtaining degrees from the University of Pennsylvania and the Pennsylvania Academy of the Fine Arts. Proficient in observation based drawing and painting, she enjoys sharing her knowledge through teaching classes and plein air workshops. Commissions welcome. Her painterly realist pieces can be found at David Barnett Gallery and in private collections nationwide.

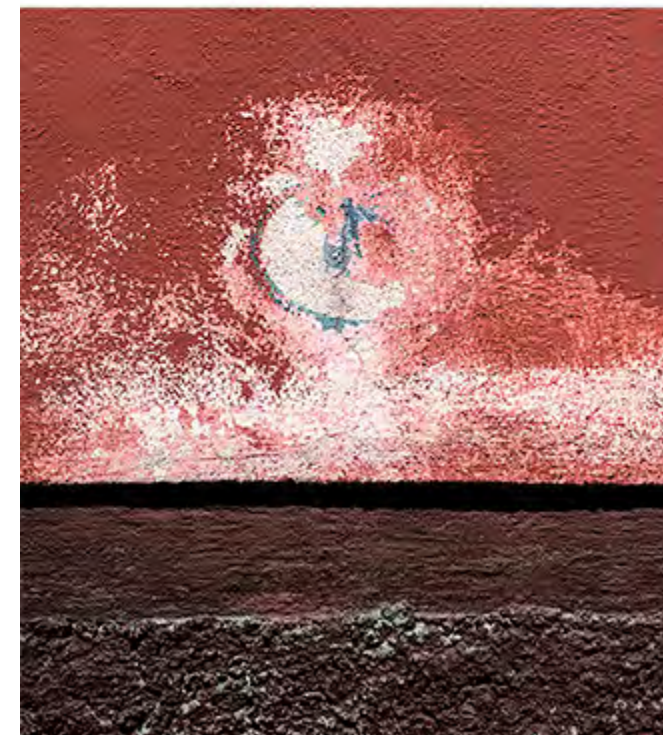
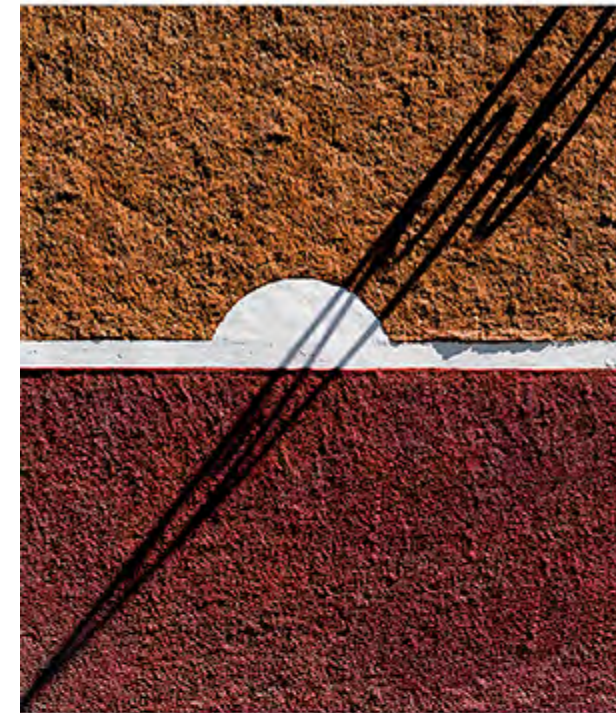


I make photographic art to express a connection with the world environment. I am drawn to experience and express the unique moment where the subject takes over -- where the photographer becomes merely a vehicle for communication with the essence of the subject. The pursuit of fine art photography offers continuous challenges to probe more deeply and carefully into common everyday experiences. I work to create photographic images that may fill a need for visual contemplation and reflection.

JERRY STYBERG
WAUWATOSA, WI

<http://www.jcstybergphotography.com>

Professional

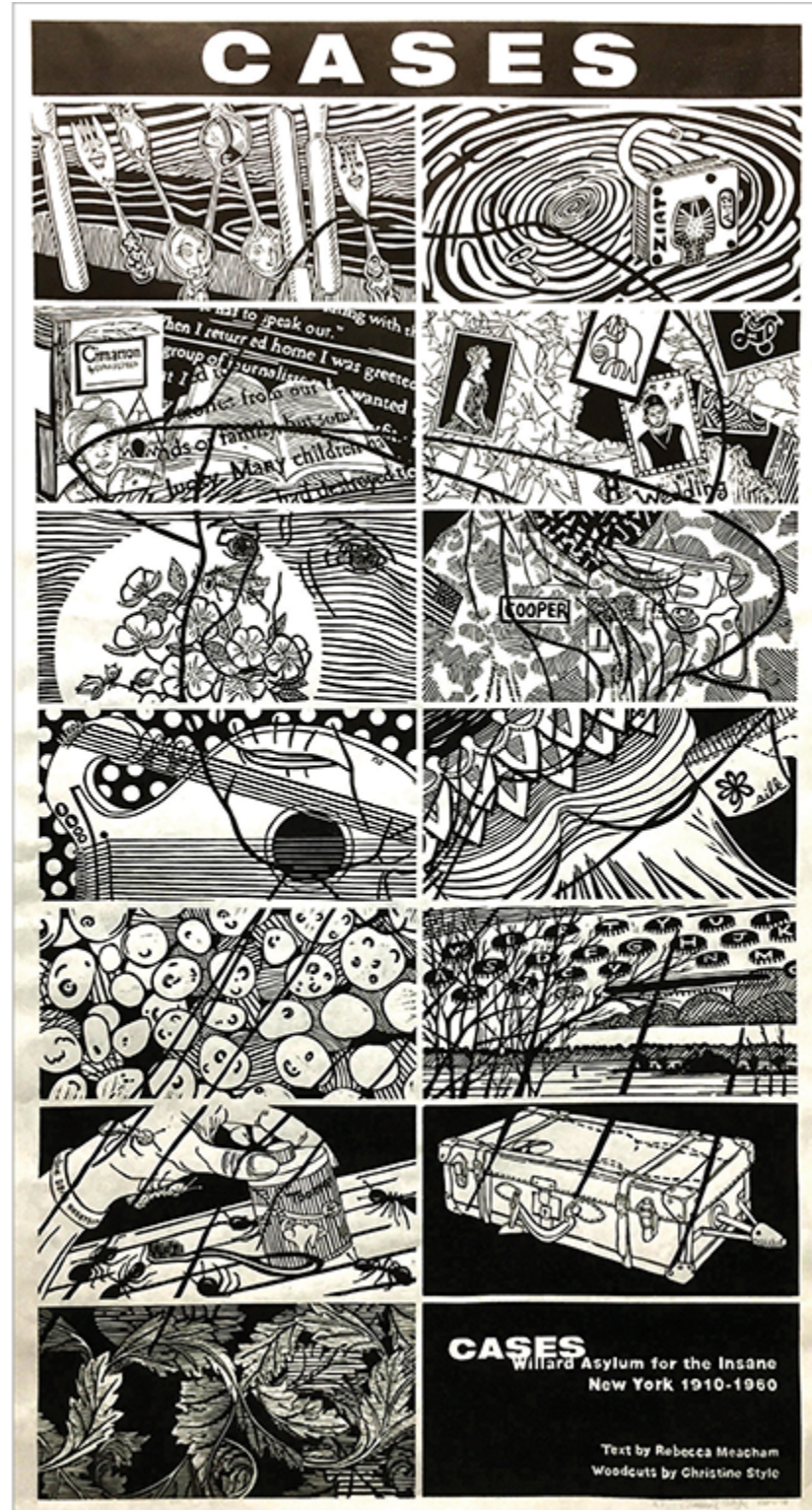


CHRISTINE STYLE
GREEN BAY, WI

<http://www.christinestyle.com>

Life Member

“CASES” Willard Asylum for the Insane New York 1910-1960 woodcut by Christine Style 2018. A flash fiction work, “Cases: Willard Asylum for the Insane, New York, 1910-1960” by Rebecca Meacham was the inspiration for Style’s woodcut images. For each of the 13 characters who speak in Meacham’s story, Style imagined, drew, and carved a woodblock-and over this entire set of 14 (13 characters plus text block), she overlaid an image of her mother, Ruth, who has dementia. Each individual character block is about 7”H x 15.5”W and together the set of 14 blocks print to 60” H x 32” W.



Using methods from diverse sources, I practice an eclecticism that consciously reflects the cultural expectations and artifacts that surround us. Interested in psychology as well as art, I make work visualizing our intrapsychic experiences and exploring associations to the sources of our impulses. Whether it is through printmaking, photography, fiber, installation or assemblage, I consider the human psyche’s navigation of an increasingly complex environment.

LAURIE TALBOT-HALL
MIDDLETON, WI!

<http://www.laurietalbothall.com>

Professional



**VICTORIA "TORI"
TASCH**
HARTLAND, WI

<http://www.toritasch.com>

Life Member

One of my favorite childhood memories is transferring the Sunday comics using silly putty and distorting the images. Stretching the image led to sketchbooks filled with crazy cartoons. Forty years later I continue to experiment with printmaking and transfer processes, often incorporating altered book pages and discarded ephemera into new pieces. Experimentation is essential to becoming successful at mastering a particular medium, genre or technique.

Travel brings a new awareness and understanding of other communities. I see justice and injustice everywhere I go.



Explosive color, lovely patterns, and intricate textures of insects and their surroundings, plus beautiful natural light, are my prime ingredients. Shallow depth of field allows me to create backgrounds with a painterly quality. All the species, from tiny sparkling blue butterflies to big bold bugs, like Monarchs, are a pleasure to photograph. My insects look very alive because they are: they are not dead bugs stuck with pins or chilled. As you view my images, think of long summer evenings chasing lightning bugs through a meadow (do not dwell on thoughts of bugs chasing you).

ANN THERING
MADISON, WI

contact: acthering@gmail.com

Professional



**KELLY
THORN DULKA**
MUSKEGO, WI

<https://fineartamerica.com/profiles/kelly-dulka.html>

As A fine artist, I have worked in various media throughout the years including oil, acrylic and stained glass with a primary focus on color pencil and gold leaf. Much of my work is depicted in colorful sea life. I try to convey a juxtaposition of complexity and simplicity with a fragile balance of composition. These naturally inspired organic shapes interplayed with linear patterns create a rich depth of rhythmic beauty.



I have explored art for years by piecing together color and pattern in a wide variety of mediums, and in the past few years I've focused on painting in watercolor. I am by nature a story-teller and I paint a wide variety of subjects, but I'm most drawn to people and the emotions they convey through attitude and posture. My education in chemistry involved many aspects which now inform my art: material flow, color, close observation and experimentation. I'm a proud Wisconsin native and continually grateful for the inspiration of our beautiful state.

MARY TILTON
WATERLOO, WI

<https://www.marytilton.com/>



**CARDI
TOELLNER-SMITH**
MEQUON, WI

My photos are derived either from experimentation or from the perfection of nature.

<http://www.CardiToellnerPhotography.com>

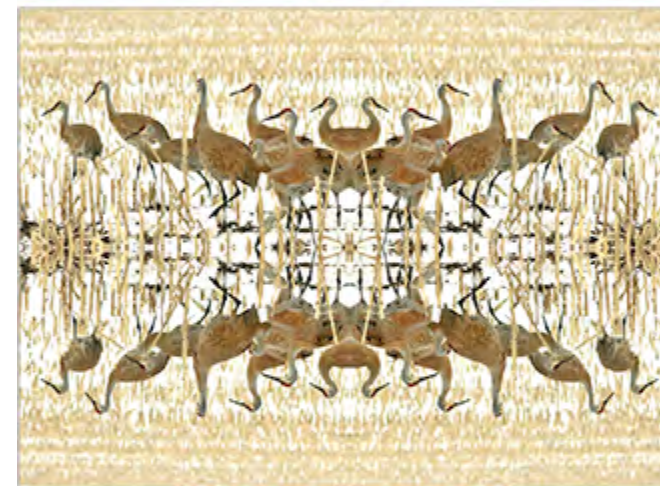
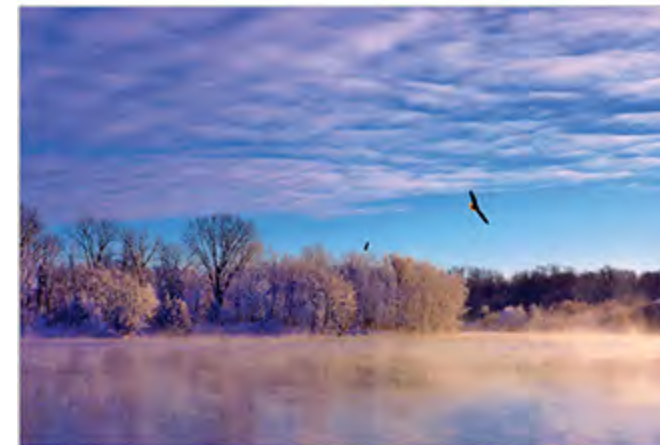
Professional



Roy and I are a husband wife team from NE WI. Our images are the result of many patient hours spent in the field. We focus our energies on 'environmental portraiture'. We embrace being able to adjust the digital raw camera data into works of art with the detail, authenticity and direct connection to the subject matter of choice. It is very important to us that our images are photographs because it means they are in fact real events experienced in real places with real subjects in the natural beauty of our multidimensional seasonally-driven state and beyond.

CAROL TOEPKE
FREMONT, WI

<https://www.collectionsbycarol.com/>



DALE VAN MINSEL
HOWARDS GROVE, WI

My artistic goal is to take familiar things that we see everyday and make them into something unique, causing the viewer to see them in a whole new way.

<http://www.dvanminsel.com>

Most of my current work is created with an iPhone, along with photo editing software, to dramatically alter color, depth, exposure and texture to achieve a truly unique image.

Professional



Our natural world is my typical source of inspiration. Distinctive scenes encountered on hikes and in travel inspire me. Producing and sharing a compelling and memorable painting or photograph of our world is deeply satisfying to me. My paintings are executed in oil or acrylic.

BARBARA VATER
MIDDLETON, WI

contact: barbara.vater@gmail.com

Professional



MAGGIE VENN
RACINE, WI

<http://www.maggienn.com>

Maggie Venn works with many layers of torn papers and with a great sense of freedom that creates in her art a connection with memory and feeling. This connection helps to illustrate her exploratory aesthetic. Her art is guided by a curiosity about how the material may be developed to a concept. This takes on the challenge of making collages that are fresh and interesting.

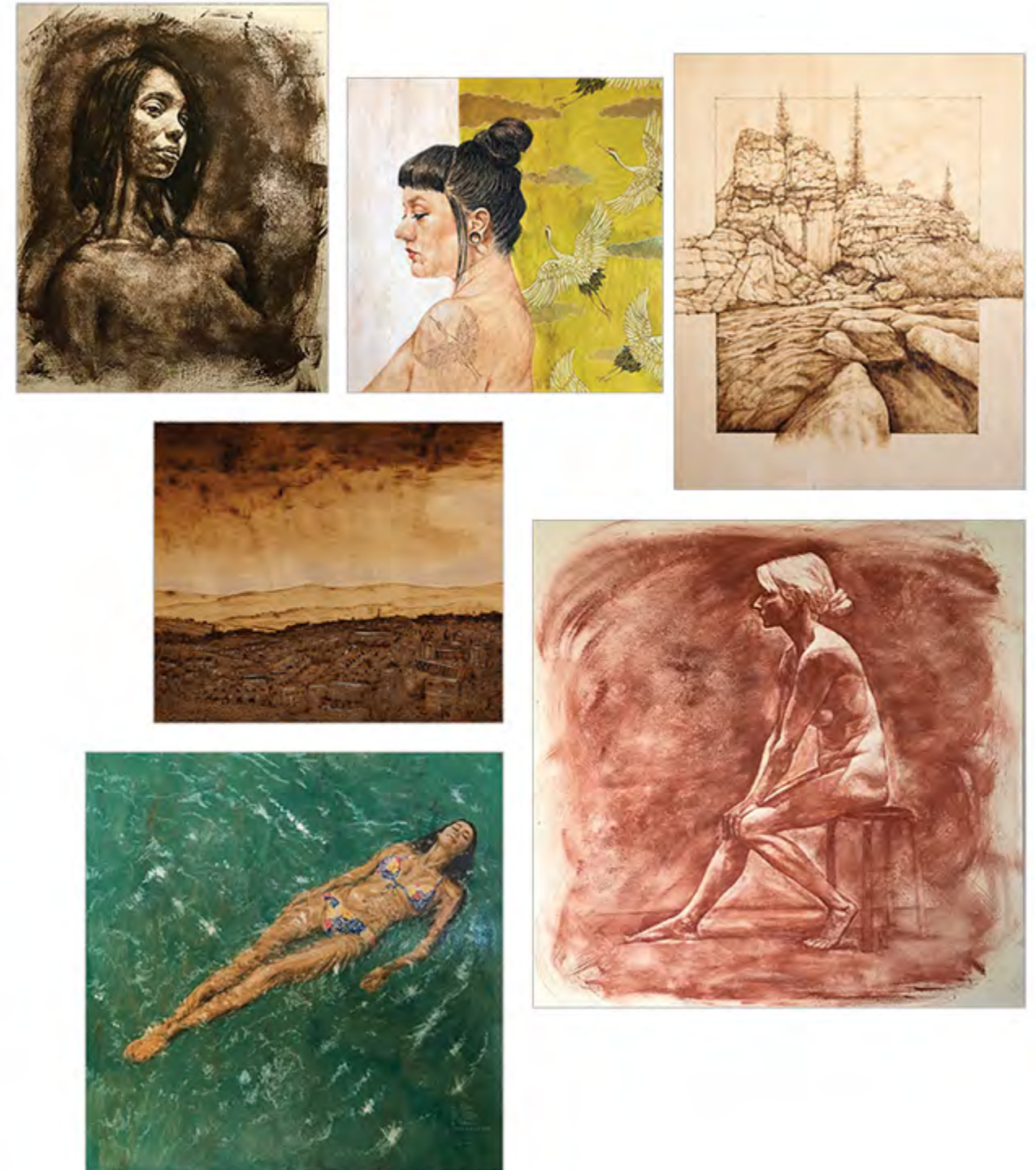
Professional



I received a BFA in Industrial Design from the old Layton School of Art and Design (now MIAD) in Milwaukee in 1968 and I am a member of MIAD's Alumni Council. I have been a full-time artist since retiring from teaching college in 2012 and work from my home studio (Studio Blip) in Shorewood, Wisconsin. I create in various dry media as well as oils and acrylics and create fine art wood burning (pyrography) as well. I am also interested in fine art photography. I have been particularly interested in portraying the human face and form since college.

KEN VONDERBERG
SHOREWOOD, WI

<http://www.studioblip.net>



MIKE WATSON
MADISON, WI

<http://www.mikewatsonart.com>

I work in oil on gesso prepared hard board panels. I prefer a smooth surface and paint in layers, building up the paint to create the final details. I sometimes work to create images that create a theme or narrative through which I express a story or feeling. It is my intention to have the viewer think about the images and how they might relate to what they see.

Professional



My acrylic paintings are grounded in my interpretations and experiences with nature and the structure of the landscape. Tension and contrast are created with color and textures using knife and brush application while exploring the interplay of light. Recent works are exploring the effect on light and texture while painting over metal leaf. My response to the environment sometimes leads to the abstract realm. I accept commissions. Current gallery representation is Woodland Gallery, Stoughton, WI.

KAREN WATSON-NEWLIN
VERONA, WI

<http://karenwatsonnewlin.com/>

Professional



KATHRYN WEDGE
NEENAH, WI

<http://www.KathrynWedge.com>

Professional

Kathryn Wedge has worked as a fine art painter and a graphic designer since graduating college with a BFA degree. Her work explores the themes of nature, architecture and the human form.

"I enjoy making art" she says, "I am always energized and amazed at what I can create from a blank piece of paper or canvas. The process, the transformation from idea to art, that's what I love."

Wedge is an award winning artist who has exhibited in many regional and international juried shows. Her work is collected by individuals and corporations throughout the United States.



My work is primarily non objective, very colorful and done in mixed media. Although there may be recognizable shapes these may not be rendered in the "correct" size or color. If a piece has been exciting, interesting and challenging to work on I feel that piece is a success.

BRENDA WENBERG
WAUPACA, WI

contact: bmw39@charter.net

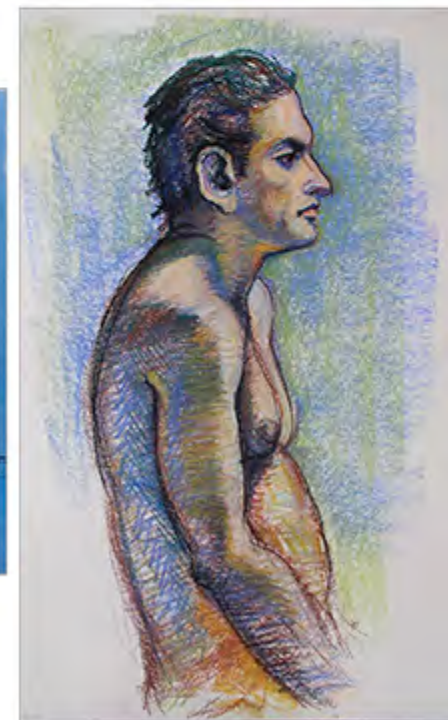
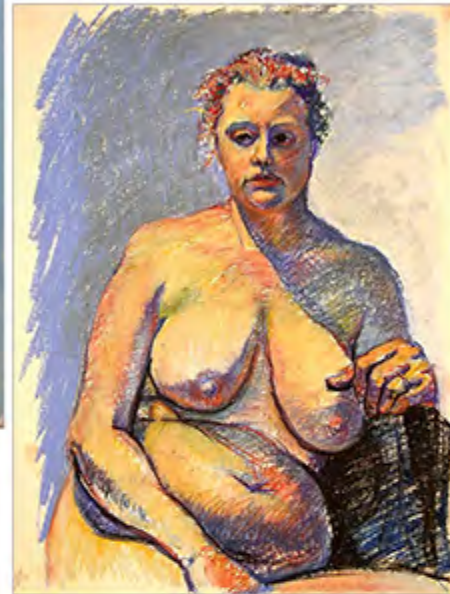
Professional



**MICHAEL
WESTCOTT**
MILWAUKEE, WI

contact: micsart@aol.com

Wax encaustic painting has been my primary medium for 25 years. Pastel is another. My work is primarily figurative and architectural but I consider it all to be portraiture. Painting and drawing were my coarse of study at The School of the Art Institute of Chicago. Milwaukee, San Francisco and Chicago have all been home to me.



My home and studio overlook the Sugar River watershed in southwestern Wisconsin. I design and build custom art out of glass and metal. The glass is cut by hand, melted in a kiln to varying temperatures in a process called fusing.

I create art because I love to. I don't mass produce art. I make art one piece at a time, giving each my full attention and care. I start out with an idea, a drawing and end up with a finely crafted object. My parents taught me art is beautiful, necessary and encouraged my creativity. I am a former professor of art and served UW-Platteville from 2011-16.

**BARBARA
WESTFALL**
MOUNT HOREB, WI

<http://www.barbarawestfall.com>



JOAN WHITE
LAKEWOOD, WI

<http://www.joanwhite.com>

Professional

By layering transparent oil paint onto prepared wood slices I create multidimensional images inspired by the patterns in the wood grain. My artwork reflects my deep love of nature, especially the Chequamegon/ Nicolet National forest that I call home and that I share with all the forest creatures. I am fortunate to have a loyal following of collectors throughout the US. My art has been featured in several international publications and is sold exclusively through my Nicolet Studio & Gallery.



Our culture is increasingly based on visual imagery. A key component of this world is text. Text informs, stimulates, indoctrinates, sells and/ or manipulates. My art uses text alone or with a variety of images in multiple media. Sometimes the text is the work of art. In other works the text expands or complements a found image that creates a conceptual interplay. These works are meant to confront the viewer to stop and react to an image in a new context. My site specific works relate to the mission of the business or institution.

CHARLES WICKLER
WAUKESHA, WI

FB: <https://www.facebook.com/Charles.F.Wickler>

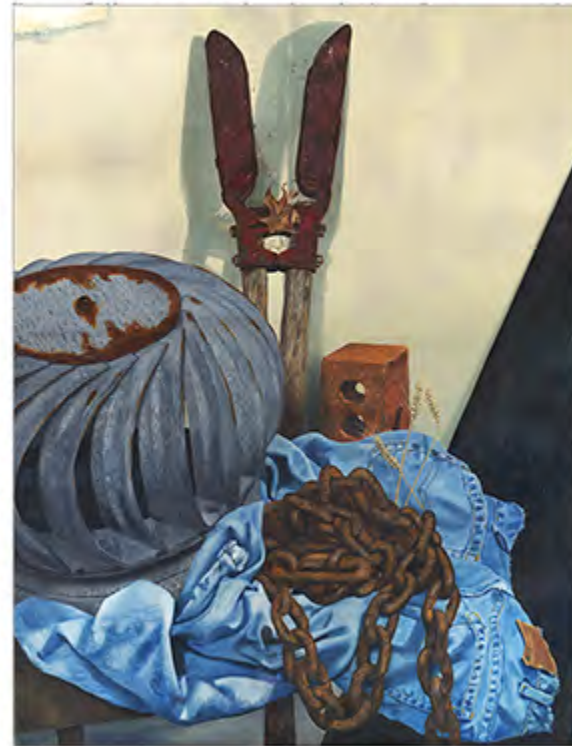
Life Member



AARON WILBERS

<http://aaronwilbersstudio.com>

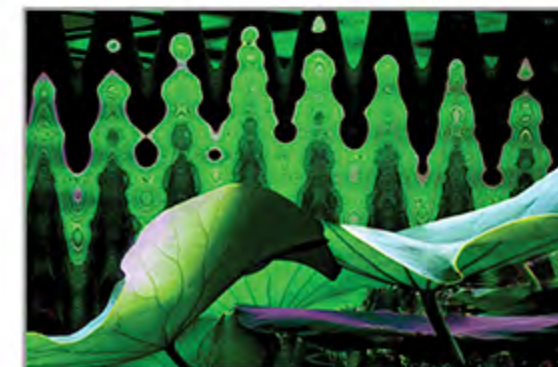
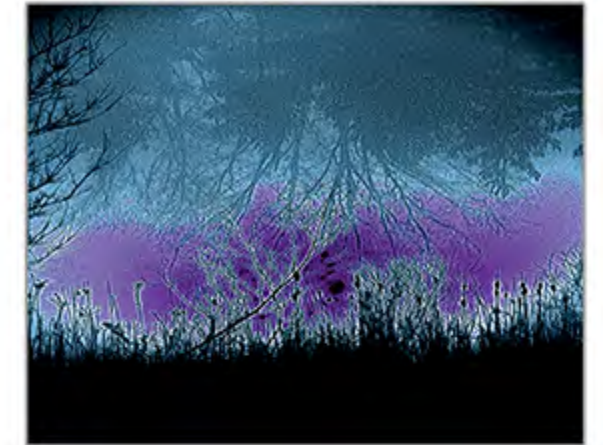
In my work, I enjoy elevating the commonplace objects and scenes to which people give little attention. I think an engaging composition can be made out of almost anything, if the right perspective is found. I strive for my work to embody strong composition, unusual or whimsical subjects, and playfulness or intrigue. Most of my past work was focused on realism, which remains a strong element of my work. However, it is now moving gently in the direction of being more stylized and non-literal. My goal is to make work that adds something positive to the world at large by lifting the mood of many individual viewers via beauty, or sometimes to inspire people to examine the world in a new perspective and look more deeply.



I'm entranced by the intricacy of life - from the underlying crystalline structure of the Universe and the glorious beauty of nature to the fluid, warm and messy complexity of human emotions. To express this fascination visually, I use a variety of approaches including combinations of photography, mixed media and found objects. Appreciating the power of symbols and sacred geometry, I enjoy combining them with the sensuality of rich colors and textures. My work varies from two dimensional wall pieces to three dimensional assemblages and sculpture.

GAIL M. WILLERT BURLINGTON, WI

contact: gwillert@gmail.com



PATRICIA WILLIAMS
 OCONTO, WI

contact: tranquilbay26@gmail.com

Professional

Artist: Pat Williams: Oil Painter-Wildlife, Floral & Landscape
 Art comes from my heart I want viewers to know that my Art is made by a real person. That their is a story to tell behind each piece I create. My Art has stirred my soul for more than 60 years. I use the finest oil to achieve realism and detail. It is important to me to do a first hand study of the subject in their own environment, so that I can pass on to my clients the emotional realism. Through my students, be it child or adult, I watch their artistic abilities grow & I thank God for the chance to "Pay it Forward."



As a photographer, it's traveling rural Wisconsin roads at sunrise that most excites me. My goal on these trips is to capture scenes that reveal the simple beauty and quiet majesty of the state's landscapes. I gravitate to scenes typically overlooked or taken for granted by those "just" passing through. The elements that distinguish my compositions are the quality of light and the sky; these characteristics can make or break a landscape. Infrared black-and-white is a tool I use to give common scenes a surreal quality.

RICHARD WUNSCH
 WAUSAU, WI

<http://www.richardwunsch.com>

Professional



SHARI WYDEVEN
OAKFIELD, WI

A lifelong Artist I spent my childhood drawing. I moved into painting a few years ago and have never looked back. Acrylic on canvas is my preferred medium. I believe there are two kinds of observers, the casual and the intense. I cater to both but add an extra treat for the intense as a gift for taking the time to really look at a piece of Art.

contact: swydeven@hotmail.com



My collage technique includes combining photos, drawings, printed papers, and repurposed materials with a variety of media, including paint, pastels, and ink. I may incorporate part of a local map, award ribbons from my childhood, or beeswax from the hives we care for into my mixed media collages. My creative process involves exploring the aesthetic qualities of these materials, as well as the meanings they hold for me. I then create imaginary tableaux. The surrealistic quality of the final images allows the viewer to embrace many interpretations and possibilities of meaning.

RITA YANNY
MADISON, WI

contact: rita.yanny@me.com

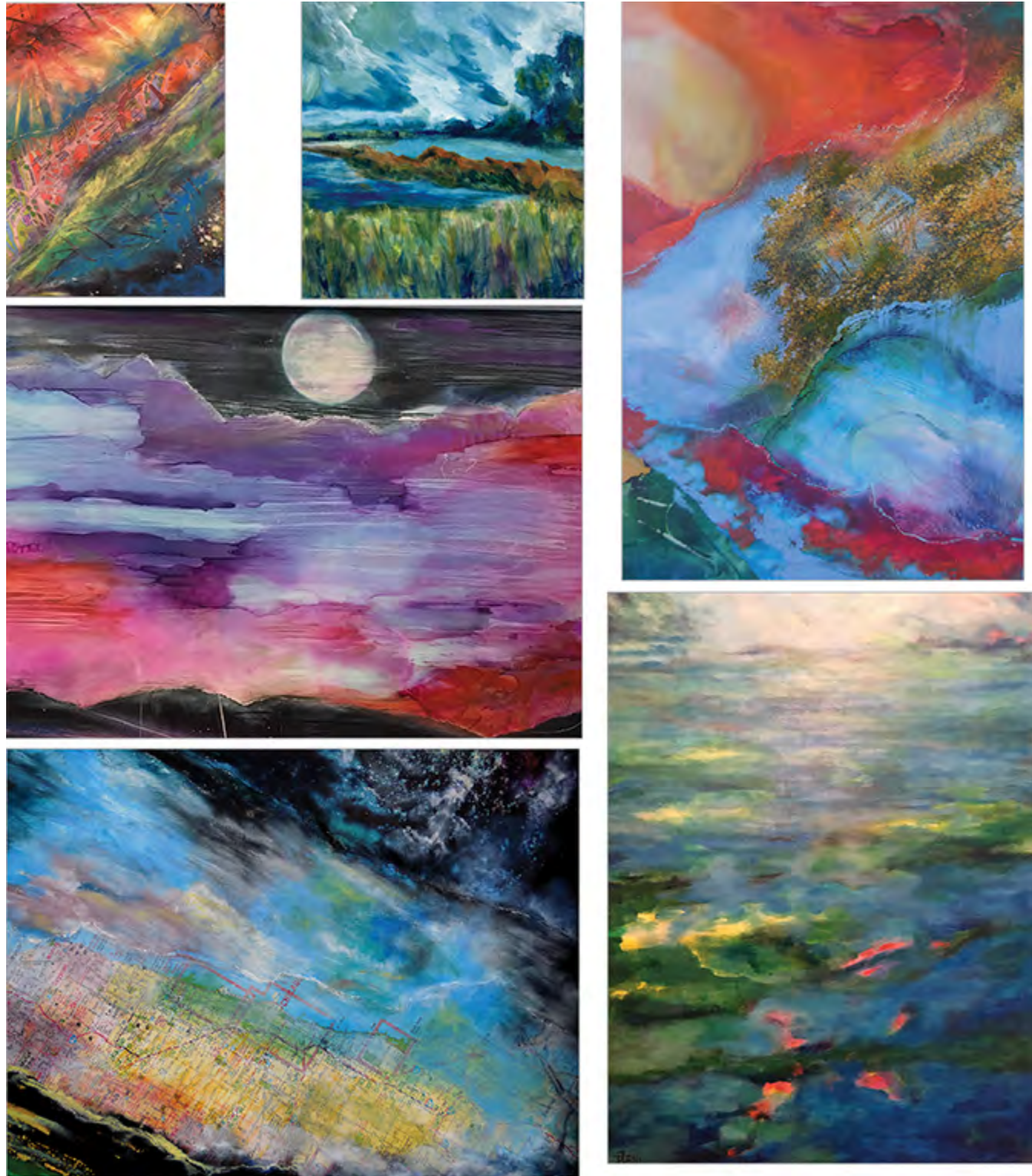
Professional



DIANE ZENI
WHITEFISH BAY, WI

<http://www.wakingdreamsstudio.com>

Once upon a time I was a dancer-now I make art. I'm intrigued by maps, skies, stars, planets and moons. I love doors, windows and bridges and the discovery of what is hidden if you look a bit closer. A blank canvas represents hope and a little fear-it's a metaphor for my life! My mixed media pieces are collages that include oil pastels and ink, and lately I've been painting larger landscapes in acrylics. Although mostly self-taught, I studied oil painting and pastels at Connecticut College in New London where I received a B.A. in Dance.

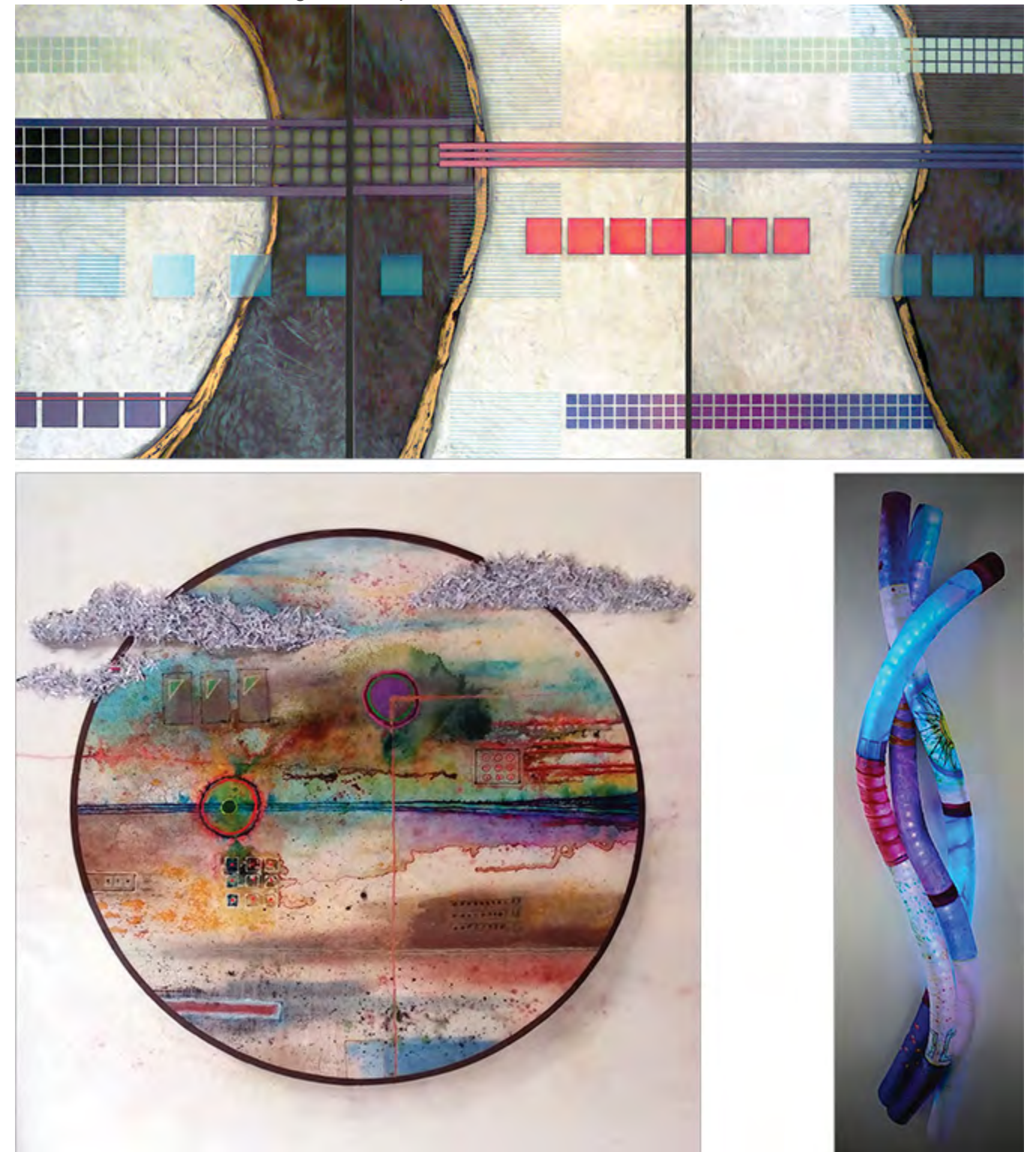


Understanding abstract art is like trying to understand jazz. Abstract artists and jazz musicians compose unique expressions of creative energy by combining their spontaneity, individuality and expertise to produce rhythmic changes in their art. Incongruous members comprise the whole, yet compositions balance. Overlapping layers ebb and flow creating pace, resonance and depth. Confusion contrasts with structure, mirroring dichotomy. Compartments, layers and intersections reflect life's complexities. I weave these threads into my art, honoring the balance we seek amid what we know, feel and dream in our need to create a sense of order according to our experiences and choices.

RAY ZOVAR
MCFARLAND, WI

<http://www.zovar.com>

Professional



Wisconsin Visual Artists 100% Pure Wisconsin Art



Wisconsin Visual Artists is the largest, most active community of working artists in the State.

Member Benefits include:

- * Multiple exhibition opportunities throughout the year
- * Monthly e-newsletter to keep you updated on activities, calls for art and events in your area and throughout the State
- * Quarterly digital magazine full of member profiles, advocacy updates, opportunities and articles of interest
- * Informative fun, monthly chapter meetings ranging from hands-on activities, to studio visits to guest speakers
- * Networking opportunities
- * Inclusion in our Promotional Catalog sent to galleries, collectors, consultants and agents
- * The opportunity to advocate for the visual arts and artists
- * Sharing your work on public & private social media pages/groups

Join today at <https://www.wisconsinvisualartists.org>



<https://www.wisconsinvisualartists.org>

